



20 Virginia Crescent,
Burton Latimer, NN15 5GA

OSCAR JAMES

Price Guide £280,000

ESTATE AGENTS

The Property in Brief...

This beautifully presented three-bedroom semi-detached property is situated in a sought-after area of Burton Latimer and offers modern living in immaculate condition throughout.

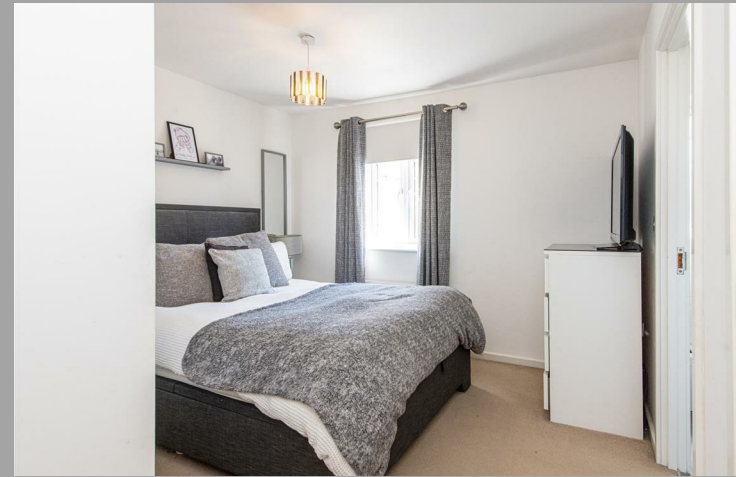
To the front, the property benefits from off-road parking and a converted garage, currently use as additional living space.

Upon entering, you are greeted by a welcoming hallway with access to a downstairs W/C. The kitchen breakfast room is fitted with a range of base and eye-level units, with ample worktop space and room for free-standing appliances. At the rear, the spacious open-plan lounge/diner provides a perfect space for entertaining, complete with French doors leading directly onto the garden.

Upstairs, the property offers three bedrooms. The master bedroom includes built-in wardrobes and a private en-suite shower room. The second bedroom is a generous double, while the third makes an ideal single bedroom, nursery, or office. A family bathroom completes the first floor.

The rear garden is a good size, featuring slabbed patio areas at both the front and back, perfect for outdoor seating and dining. A large storage shed is included, with the remainder of the garden laid to lawn for easy maintenance.

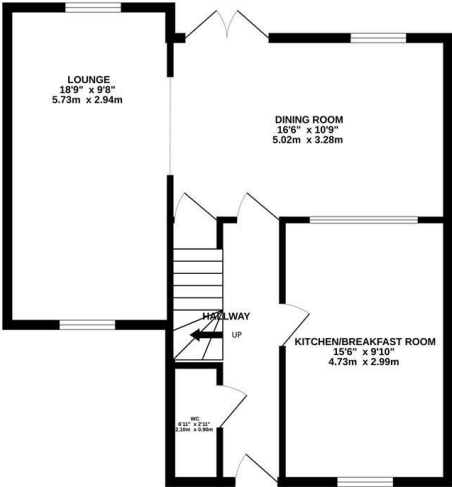
This is a superb opportunity to acquire a move-in-ready family home in a popular location, close to local schools, shops, and transport links.



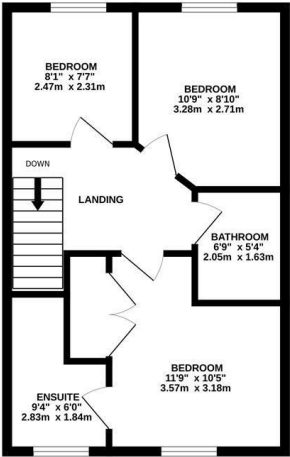
Dimensions

What our vendors say...

GROUND FLOOR
614 sq.ft. (57.0 sq.m.) approx.



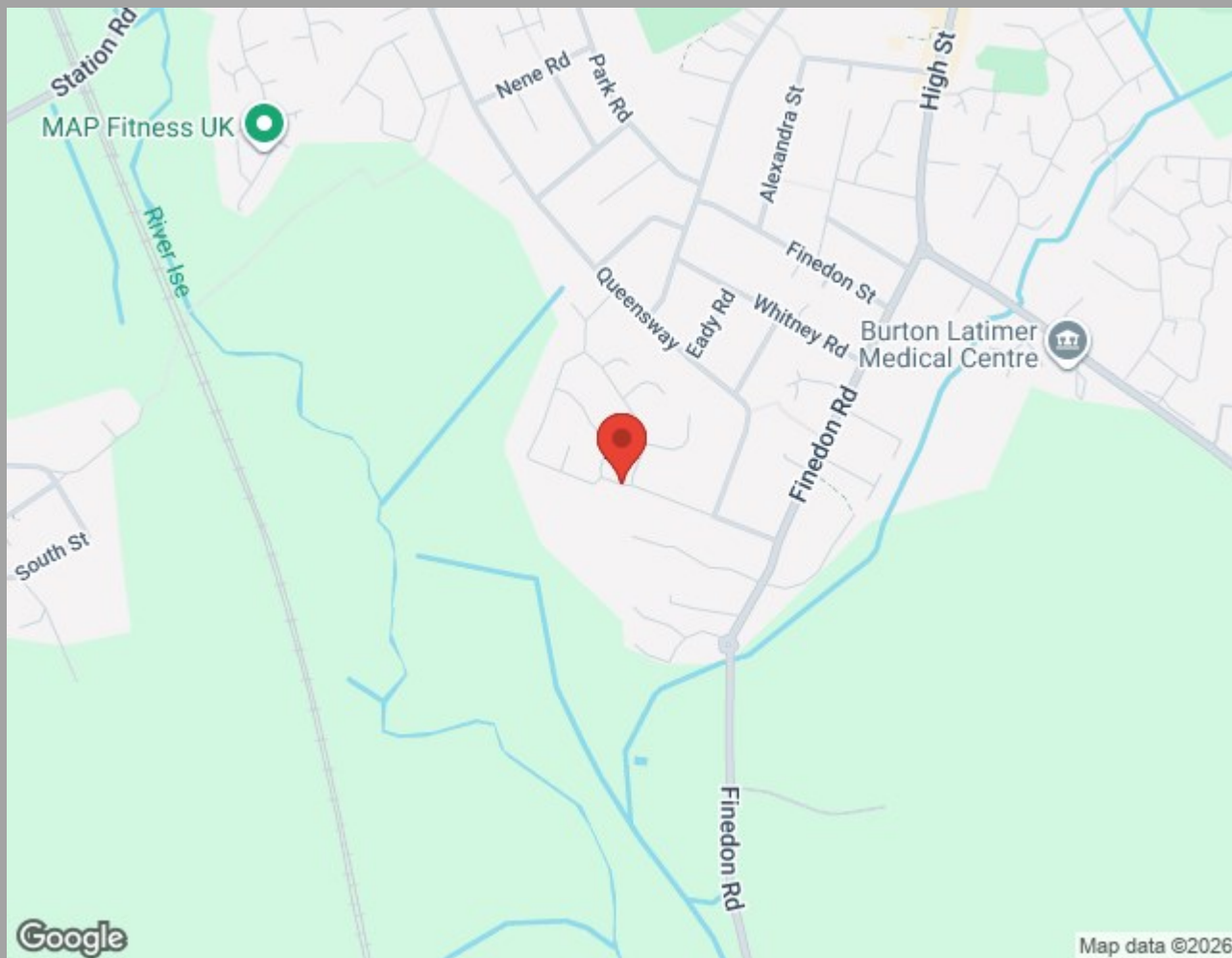
1ST FLOOR
433 sq.ft. (40.2 sq.m.) approx.



TOTAL FLOOR AREA : 1046 sq.ft. (97.2 sq.m.) approx.

Whilst every attempt has been made to ensure the accuracy of the floorplan contained here, measurements of doors, windows, rooms and any other items are approximate and no responsibility is taken for any error, omission or mis-statement. This plan is for illustrative purposes only and should be used as such by any prospective purchaser. The services, systems and appliances shown have not been tested and no guarantee as to their operability or efficiency can be given.

Made with Metrepro ©2025



Find us at;
45 High Street
Burton Latimer, NN15 5LB

01536 722 222
burton@oscar-james.com
www.oscar-james.com
Follow us on Facebook

Whilst every attempt has been made to ensure the accuracy of the floor plan and details contained here, measurements of doors, windows, rooms and any other items are approximate and no responsibility is taken for any error, omission, or mis-statement. This plan is for illustrative purposes only and should be used as such by any prospective purchaser. The services, systems and appliances shown have not been tested and have no guarantee as to their operability or efficiency can be given. Floor plan made with Metropix 2014. Fixtures and fittings may vary at point of sale.