



Walden Road,
Burton Latimer, NN15 5XP

OSCAR JAMES

Price Guide £240,000

ESTATE AGENTS

The Property in Brief...

Situated in the sought-after town of Burton Latimer, this three-bedroom home is presented in excellent condition throughout and offers spacious, modern living ideal for first-time buyers or growing families. Benefiting from off-road parking and south-west facing garden, this property is ready to move straight into.

The accommodation begins with an inviting entrance hallway leading through to a generous lounge diner, flooded with natural light from the patio doors opening onto the rear garden. The well-proportioned kitchen offers a range of base and eye-level units with ample worktop space and room for freestanding appliances. A convenient ground floor W/C completes the downstairs accommodation.

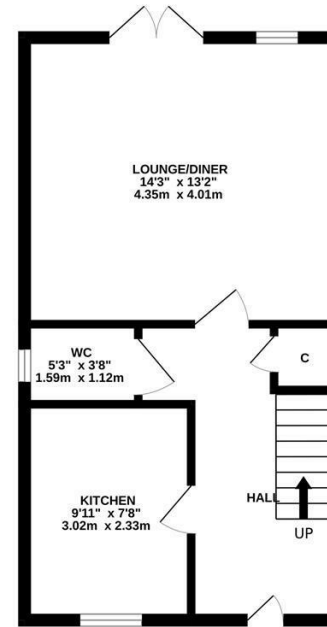
Upstairs, the property offers three well-sized bedrooms along with a modern family bathroom.

Externally, the rear garden enjoys a desirable south-west facing aspect and features an extended slabbed patio area, perfect for outdoor entertaining, with the remainder laid to lawn.

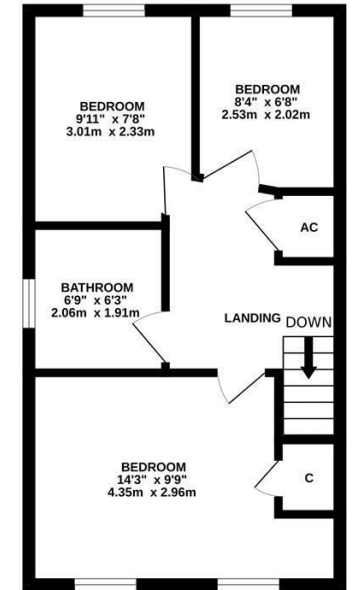


Dimensions

GROUND FLOOR
382 sq.ft. (35.5 sq.m.) approx.

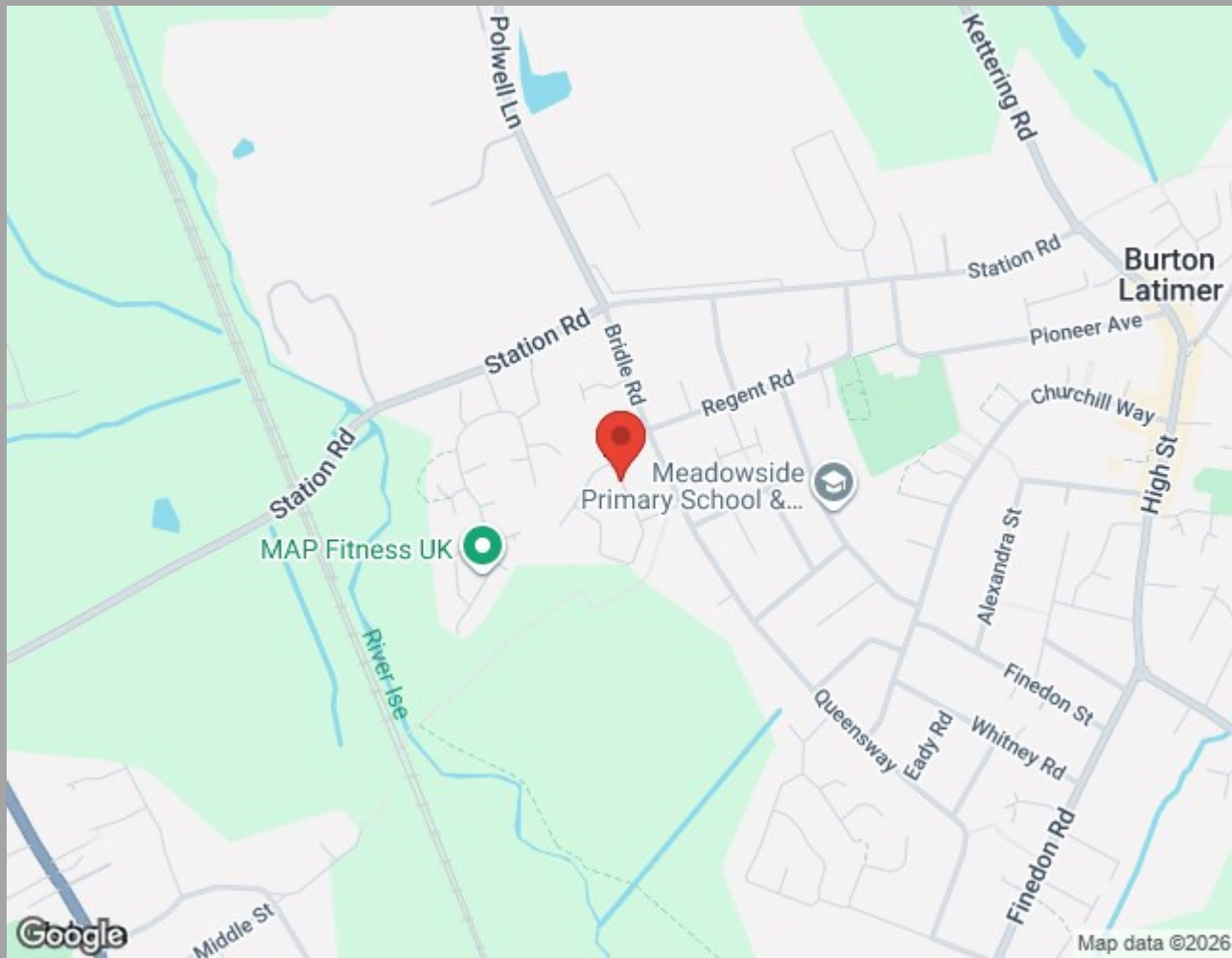


1ST FLOOR
376 sq.ft. (34.9 sq.m.) approx.



TOTAL FLOOR AREA: 758 sq.ft. (70.4 sq.m.) approx.
Whilst every attempt has been made to ensure the accuracy of the floorplan contained here, measurements of doors, windows, rooms and any other items are approximate and no responsibility is taken for any error, omission or mis-statement. This plan is for illustrative purposes only and should be used as such by any prospective purchaser. The services, systems and appliances shown have not been tested and no guarantee as to their operability or efficiency can be given.
Made with Metropix ©2025

What our vendors say...



Find us at;
45 High Street
Burton Latimer, NN15 5LB

01536 722 222
burton@oscar-james.com
www.oscar-james.com
Follow us on Facebook

Whilst every attempt has been made to ensure the accuracy of the floor plan and details contained here, measurements of doors, windows, rooms and any other items are approximate and no responsibility is taken for any error, omission, or mis-statement. This plan is for illustrative purposes only and should be used as such by any prospective purchaser. The services, systems and appliances shown have not been tested and have no guarantee as to their operability or efficiency can be given. Floor plan made with Metropix 2014. Fixtures and fittings may vary at point of sale.

