



9 Eastfield Crescent,
Finedon, NN9 5DJ

OSCAR JAMES

ESTATE AGENTS

£260,000

The Property in Brief...

Welcome to this charming 3-bedroom property located in the picturesque village of Finedon. Situated in a desirable residential area, this delightful home offers a comfortable and spacious living environment.

Upon entering the property, you will be greeted by a welcoming hallway that leads to the various rooms on the ground floor. The kitchen/breakfast area is a standout feature, offering a bright and inviting space to prepare meals and enjoy casual dining. It is well-equipped with modern appliances and ample storage, creating a functional and practical cooking environment.

Adjacent to the kitchen is the lounge, a cozy retreat where you can unwind and relax. The lounge features large windows that allow an abundance of natural light to fill the room, creating a warm and inviting atmosphere. It is an ideal space for entertaining guests or spending quality time with family, downstairs there is also a WC and shower room, dining room and lovely conservatory.

Additionally, this property features an office outbuilding, providing a dedicated space for those who work remotely or require a private area for studying or creative pursuits.

Upstairs, you will find three well-proportioned bedrooms, each offering a comfortable retreat for rest and relaxation. Completing the accommodation is a family bathroom, equipped with modern fixtures.

Outside the property, there is parking available, ensuring convenience for residents and visitors alike. The private rear garden is a true gem, offering a secluded oasis for outdoor activities, gardening, or simply enjoying the fresh air. It provides a peaceful retreat where you can relax and entertain, complete with a lush lawn, mature plants, and space for outdoor furniture.

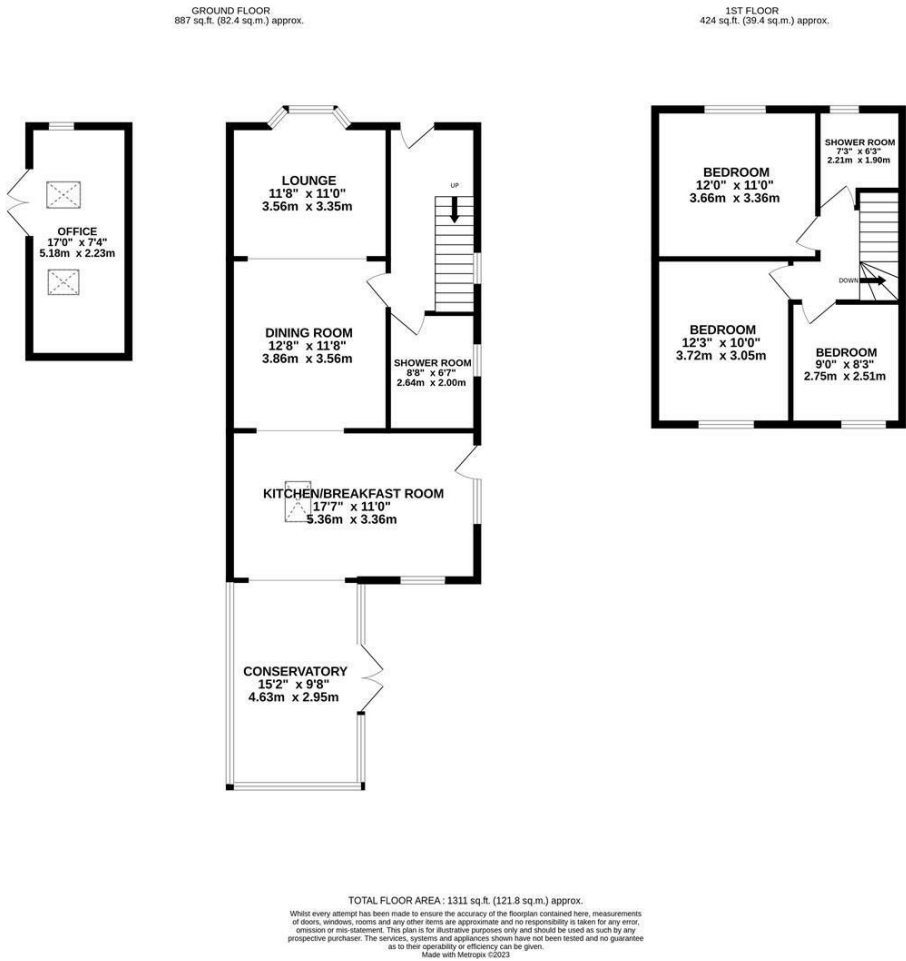


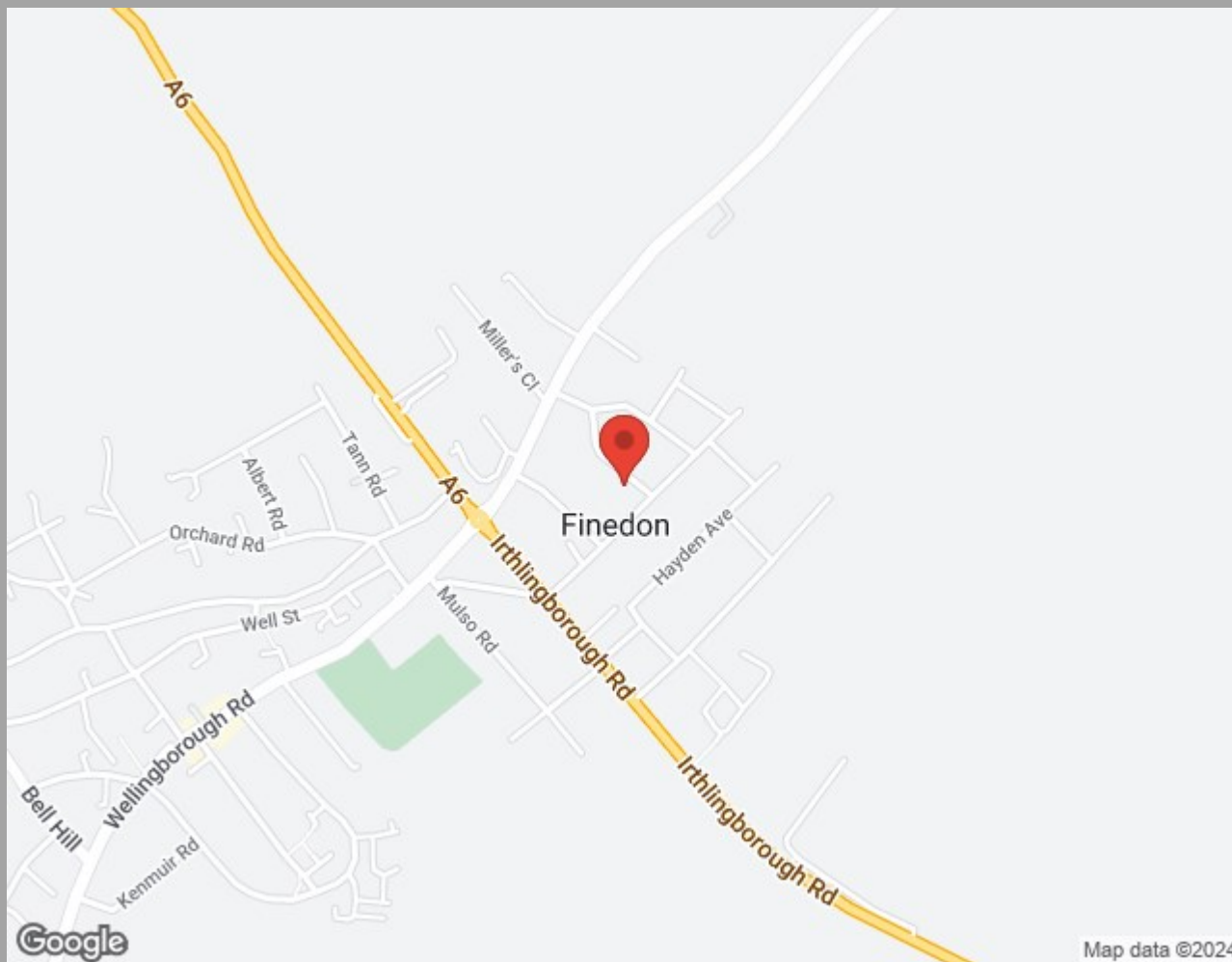
Dimensions

- Lounge
11'8 x 11' (3.56m x 3.35m)
- Dining Room
12'8 x 11'8 (3.86m x 3.56m)
- Kitchen/Breakfast Room
11' x 17'7 (3.35m x 5.36m)
- Conservatory
15'2 x 9'8 (4.62m x 2.95m)
- Office
17' x 7'4 (5.18m x 2.24m)
- Shower Room 1
8'8 x 6'7 (2.64m x 2.01m)
- Bedroom 1
12'3 x 10' (3.73m x 3.05m)
- Bedroom 2
12' x 11' (3.66m x 3.35m)
- Bedroom 3
9' x 8'3 (2.74m x 2.51m)
- Shower Room 2
7'3 x 6'3 (2.21m x 1.91m)

What our vendors say...

This has been our family home for years and we have extended and modified it to make what we feel is a really useful space. We love our garden the most as it gets the sun all day long and is a real sun trap.





Find us at;
45 High Street
Burton Latimer, NN15 5LB

01536 722 222
burton@oscar-james.com
www.oscar-james.com
Follow us on Facebook

Whilst every attempt has been made to ensure the accuracy of the floor plan and details contained here, measurements of doors, windows, rooms and any other items are approximate and no responsibility is taken for any error, omission, or mis-statement. This plan is for illustrative purposes only and should be used as such by any prospective purchaser. The services, systems and appliances shown have not been tested and have no guarantee as to their operability or efficiency can be given. Floor plan made with Metropix 2014. Fixtures and fittings may vary at point of sale.

