

Longfellow Road
Wellingborough
NN8 3RY

£180,000

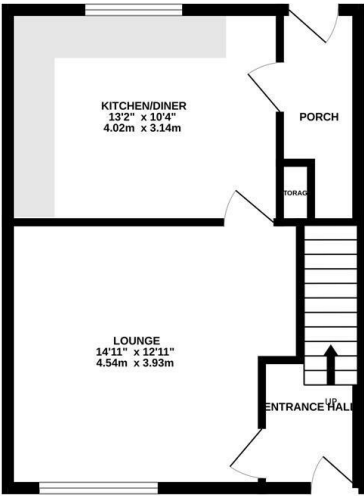


OSCAR JAMES

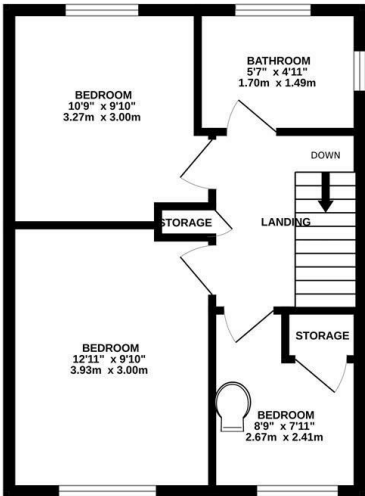
...expect excellence

FLOOR PLANS

GROUND FLOOR
394 sq.ft. (36.6 sq.m.) approx.



1ST FLOOR
396 sq.ft. (36.8 sq.m.) approx.



TOTAL FLOOR AREA: 791 sq.ft. (73.5 sq.m.) approx.
Whilst every attempt has been made to ensure the accuracy of the floorplan contained here, measurements of doors, windows, rooms and any other items are approximate and no responsibility is taken for any error, omission or mis-statement. This plan is for illustrative purposes only and should be used as such by any prospective purchaser. The services, systems and appliances shown have not been tested and no guarantee as to their operability or efficiency can be given.
Made with Metropix v2025



AT A GLANCE...



Living Room



Kitchen/Diner



Three Bedrooms



Family Bathroom



Front & Rear Gardens



On Street Parking



WHAT'S GREAT?

Nestled on the charming Longfellow Road in Wellingborough, this delightful three-bedroom mid-terraced house presents an excellent opportunity for both first-time buyers and families seeking a new home. The property boasts a well-thought-out layout, providing ample space for comfortable living.

As you enter, you are greeted by a welcoming atmosphere that flows throughout the home. The ground floor features a spacious living area, perfect for relaxing or entertaining guests. The kitchen is functional and offers the potential for personalisation, allowing you to create a culinary haven tailored to your tastes.

Upstairs, you will find three generously sized bedrooms, each offering a peaceful retreat at the end of the day. The natural light that floods these rooms enhances their inviting character, making them ideal for rest and relaxation.

One of the standout features of this property is the absence of an upper chain, ensuring a smooth and efficient buying process. This is particularly advantageous for those eager to settle into their new home without unnecessary delays.

The location on Longfellow Road is also noteworthy, as it provides easy access to local amenities, schools, and transport links, making it a convenient choice for families and commuters alike.

In summary, this three-bedroom mid-terraced house on Longfellow Road is a fantastic opportunity for anyone looking to establish themselves in Wellingborough. With its appealing features and prime location, it is sure to attract considerable interest. Do not miss the chance to make this lovely property your new home.

...expect excellence



SELLER'S SECRET

This has been our family home for about 50 years it's always been filled with love and happiness. It's housed four generations over this period. It's now time for someone else to get the same enjoyment we have had from it.



Why we like it....

In need of some improvements this property has been a family home for many years. A great property to let you imagination create something that will last generations to come.

OSCAR JAMES

Central Hall 1a High Street, | Wellingborough |
NN8 4HT
01933 830300
www.oscar-james.com

To buy or not to buy....
