

Gretton Court  
Wellingborough  
NN8 5UD

£430,000

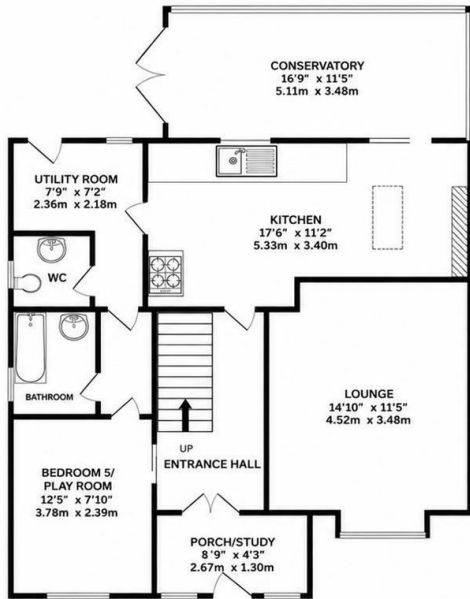


OSCAR JAMES

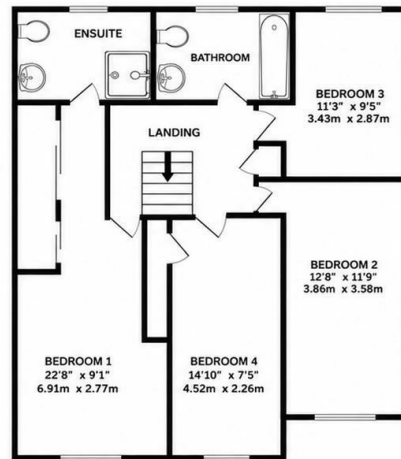
...expect excellence

# FLOOR PLANS

**GROUND FLOOR**  
Total Floor Area: 1,049 sq ft / 97.5 sq m



**1ST FLOOR**  
Total Floor Area: 876 sq ft / 81.4 sq m



**TOTAL FLOOR AREA (GROUND + 1ST FLOOR):**  
1,925 sq ft / 178.9 sq m

Whilst every attempt has been made to ensure the accuracy of the floorplan contained here, measurements of floors, windows, rooms and any other items are approximate and no responsibility is taken for any error, omission or mis-statement. This plan is for illustrative purposes only and should be used as such by any prospective purchaser. The services, systems and appliances shown have not been tested and no guarantee as to their operability or efficiency can be given.  
Made with Metropix 02026



## AT A GLANCE...



Bay-Fronted Lounge



Open Aspect Kitchen/Diner



Four Double Bedrooms



Three Bathrooms and W/C



Tidy Low-Maintenance Garden



Off-Road Parking for Multiple Cars



## WHAT'S GREAT?

Nestled in the tranquil cul-de-sac of Gretton Court, Wellingborough, this extended four-bedroom detached family home offers a perfect blend of space and comfort. Upon entering, you are welcomed by an inviting entrance porch that leads into a spacious hall adorned with stylish LVT flooring. The heart of the home is undoubtedly the open kitchen and dining area, seamlessly connected to a bright conservatory, making it an ideal space for entertaining guests or enjoying family gatherings.

The ground floor is thoughtfully designed, featuring a separate living room that provides a cosy retreat, alongside a converted garage that serves as a versatile playroom or study, catering to the needs of modern family life. Additionally, the property boasts a utility room, a convenient downstairs cloakroom, and a separate bathroom, enhancing its practicality.

As you ascend to the first floor, you will find four well-proportioned bedrooms, each offering ample space for relaxation. The principal bedroom is a standout feature, complete with its own en-suite bathroom, ensuring privacy and comfort.

Outside, the property benefits from generous off-road parking at the front, perfect for accommodating multiple vehicles, which is particularly advantageous for growing families. The low-maintenance rear garden provides a peaceful outdoor space, ideal for enjoying sunny days or hosting barbecues.

Located close to Redwell School, local public house, shops and leisure facilities this property has something for everyone on its doorstep, taking the stress out of those last minute essentials.

This delightful home in Gretton Court is not just a property; it is a sanctuary for family living, combining modern amenities with a welcoming atmosphere. It is a must-see for anyone seeking a spacious and versatile family home in a desirable location.

...expect excellence



# SELLER'S SECRET

We have loved living here, very quiet residential area with a lovely community and friendly neighbours. Lots of local parks and walks to enjoy.



## Why we like it....

The Current owners have update most of the property in the time they have owned this home, adding a new kitchen and en-suite, along with the stylish LVT flooring that covers the majority of the ground floor to name a few alterations. Once you've viewed the property lets us know how well you think they did?

# OSCAR JAMES

Central Hall 1a High Street, | Wellingborough |  
NN8 4HT  
01933 830300  
[www.oscar-james.com](http://www.oscar-james.com)

To buy or not to buy....

---

---

---

---

---