

Mile Street
Bozeat
NN29 7NB

£1,195 Per Month

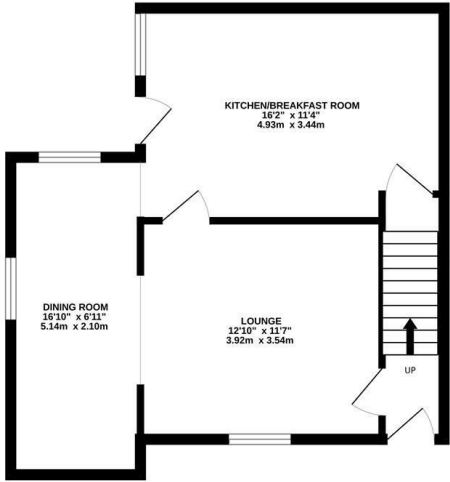


OSCAR JAMES

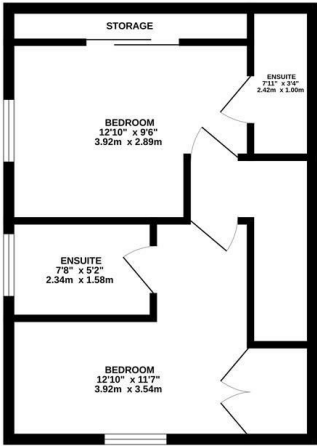
...expect excellence

FLOOR PLANS

GROUND FLOOR
487 sq.ft. (45.2 sq.m.) approx.



1ST FLOOR
370 sq.ft. (34.4 sq.m.) approx.



TOTAL FLOOR AREA : 857 sq.ft. (79.6 sq.m.) approx.

Whilst every attempt has been made to ensure the accuracy of the floorplan contained here, measurements of doors, windows, rooms and any other items are approximate and no responsibility is taken for any error, omission or mis-statement. This plan is for illustrative purposes only and should be used as such by any prospective purchaser. The services, systems and appliances shown have not been tested and no guarantee as to their operability or efficiency can be given.
Made with Metropix v2025



AT A GLANCE...



custom text 1



custom text 4



custom text 2



custom text 5



custom text 3



custom text 6



WHAT'S GREAT?

Located in the picturesque village of Bozeat, Wellingborough, this beautifully newly renovated mid-terrace house offers a delightful blend of modern living and historical character. Built in 1850, the property spans an impressive 1,055 square feet and features two well-proportioned bedrooms and two bathrooms, making it an ideal home for couples or small families.

As you enter, you are welcomed into a spacious open-plan lounge and dining area, which is bathed in natural light, creating a warm and inviting atmosphere. This thoughtfully designed reception room flows seamlessly into the well-appointed kitchen, which is equipped with modern conveniences including an integrated fridge freezer, dishwasher, oven, and gas hob. The kitchen not only serves as a functional space but also overlooks a secure garden, perfect for entertaining guests or enjoying a quiet evening outdoors.

To the first floor, there are two generously sized double bedrooms, which each boasts their own ensuite bathroom. one with a bath and overhead shower the other with a shower

cubicle.

The property's location in Bozeat offers a peaceful village lifestyle while still being conveniently close to local amenities and easily accessible transport links to Milton Keynes and the M1. This home is a rare find, combining contemporary comforts with the charm of a historic building.

*** AVAILABLE NOW ***

Council Tax Band: B
EPC Rating: D

...expect excellence



SELLER'S SECRET



Why we like it....

OSCAR JAMES

1 Newland Street | Kettering | NN16 8JH
01536 415777
www.oscar-james.com

To buy or not to buy....
