

Ripley Walk  
Corby  
NN18 9JR

£895 Per Month

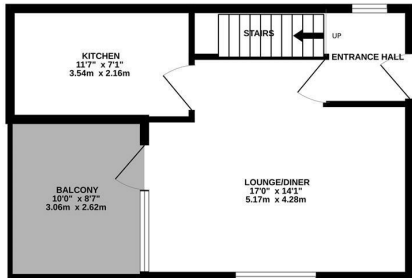


OSCAR JAMES

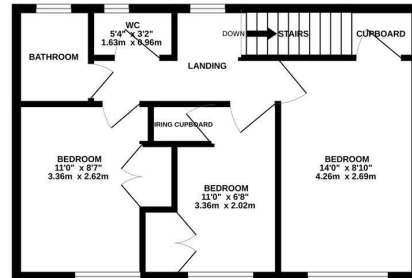
...expect excellence

# FLOOR PLANS

GROUND FLOOR  
351 sq.ft. (32.6 sq.m.) approx.



1ST FLOOR  
438 sq.ft. (40.7 sq.m.) approx.



TOTAL FLOOR AREA : 789 sq.ft. (73.3 sq.m.) approx.

Whilst every attempt has been made to ensure the accuracy of the floorplan contained here, measurements of doors, windows, rooms and any other items are approximate and no responsibility is taken for any error, omission or mis-statement. This plan is for illustrative purposes only and should be used as such by any prospective purchaser. The services, systems and appliances shown have not been tested and no guarantee as to their operability or efficiency can be given.  
Made with Metropix ©2026



## AT A GLANCE...



custom text 1



custom text 4



custom text 2



custom text 5



custom text 3



custom text 6



## WHAT'S GREAT?

Recently refurbished 3-bedroom apartment in Ripley Walk, Corby, offering modern and comfortable living across two floors.

The property features a bright open-plan kitchen, separate lounge and dining area, and a private balcony perfect for relaxing outdoors. All three bedrooms are spacious doubles with built-in storage, and the family bathroom includes a bath with overhead shower.

Set in a well-maintained building with communal parking, the apartment is conveniently located close to local shops, schools, and transport links.

A spacious and practical home, ideal for families or professionals.

\*\*\* AVAILABLE NOW \*\*\*

Council Tax Band:

EPC Rating:

...expect excellence



# SELLER'S SECRET



*Why we like it....*

# OSCAR JAMES

1 Newland Street | Kettering | NN16 8JH  
01536 415777  
[www.oscar-james.com](http://www.oscar-james.com)

*To buy or not to buy....*

---

---

---

---

---