

8 Townend Close
Husbands Bosworth
Lutterworth
LE17 6RA

£675,000

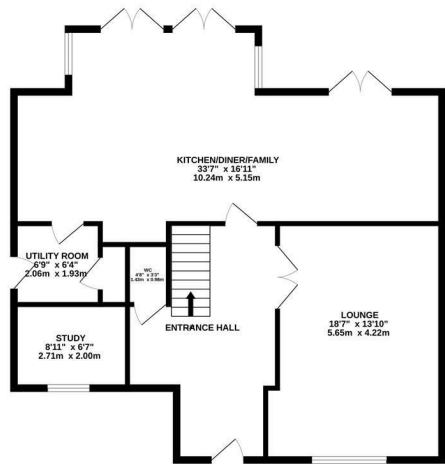


OSCAR JAMES

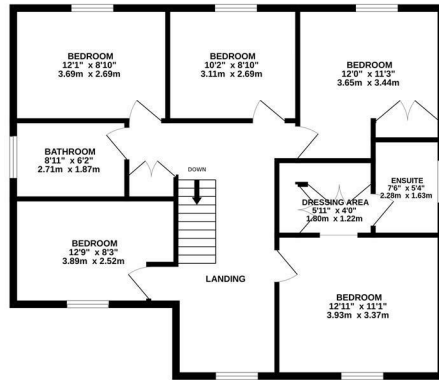
...expect excellence

FLOOR PLANS

GROUND FLOOR
972 sq.ft. (90.3 sq.m.) approx.



1ST FLOOR
898 sq.ft. (83.5 sq.m.) approx.



TOTAL FLOOR AREA: 1870 sq.ft. (173.7 sq.m.) approx.

Whilst every attempt has been made to ensure the accuracy of the floorplan contained here, measurements of doors, windows, rooms and any other items are approximate and no responsibility is taken for any error, omission or mis-statement. This plan is for illustrative purposes only and should be used as such by any prospective purchaser. The services, systems and appliances shown have not been tested and no guarantee as to their operability or efficiency can be given.
Made with Metropix v2.026



AT A GLANCE...



Spacious lounge



Open plan kitchen/diner/family room



Five generously sized bedrooms



Family bathroom and en-suite to principle bedroom



West facing garden



Off road parking for multiple cars and double garage



WHAT'S GREAT?

An exceptional five-bedroom detached family residence occupying a prestigious position within the desirable village of Husbands Bosworth. Situated on the sought-after Townsend Close, this impressive home offers beautifully proportioned accommodation, high-quality finishes and superb family living space throughout.

At the heart of the property is a magnificent open-plan kitchen, dining and family room, thoughtfully designed to create a stylish and sociable hub for modern living. The spacious kitchen is complemented by generous dining and seating areas, making it ideal for both everyday family life and entertaining on a larger scale. Additionally you will find a formal lounge, utility room, WC and home office.

The first floor boasts five well-proportioned bedrooms, including an elegant principal suite with a contemporary en-suite shower room and dressing area. The remaining bedrooms are served by a well-appointed family bathroom, offering ample space for growing families and visiting guests alike.

Externally, the property benefits from a private and enclosed rear garden, perfect for outdoor entertaining and relaxation. A substantial driveway provides ample off-road parking and leads to a detached double garage with electric door, offering excellent storage and practicality.

Combining generous living accommodation with an enviable village setting, this outstanding family home is conveniently located close to local amenities, reputable schools and excellent transport connections, presenting a rare opportunity to acquire a truly impressive residence in one of South Leicestershire's most sought-after villages.

Upgrades throughout the property include a fantastic, upgraded kitchen with quartz worktops and induction hob, air conditioning to both floors and a marble fireplace to the living room. Viewings are advised to appreciate this beautiful home.

...expect excellence



SELLER'S SECRET

Having owned the property from new, we have found the house to be exceptionally spacious and practical, positioned in a highly convenient location. Over the years, we have invested in premium additions throughout the property to enhance its comfort and functionality. We're sure the owners will appreciate the upgrades, including climate-controlled air conditioning to both floors for year-round heating and cooling, an upgraded kitchen with an induction hob, and the added convenience of an electric garage door. Externally, the property benefits from a fully established, matured garden that offers a beautiful, completed backdrop to the home.



Why we like it....

This beautiful home is offered in fantastic condition throughout. Upgrades throughout the property, stunning garden and double garage. Viewings are advised to appreciate this great home in this popular location.

To buy or not to buy....

OSCAR JAMES

7 St Marys Road | Market Harborough | LE16

7DS

01858 458 458

www.oscar-james.com
