



102 Lingfield Road, Edenbridge, Kent TN8 5EB
Guide: £590,000 Freehold

JAMES MILLARD
INDEPENDENT ESTATE AGENTS



- *Extended Character Cottage
- *Uninterrupted Countryside Views to Front
- *Sitting Room with Open Fireplace
- *Modern Kitchen/Breakfast Room
- *Separate Dining Room *Four Bedrooms
- *Ground Floor Cloakroom
- *Gravel Driveway for Two Cars
- *Impressive Rear Garden over 120ft in Length

Description

Beautifully presented extended four bedroom character cottage, situated in a desirable setting on the edge of Edenbridge fronting fields and backing woodland. This charming cottage has been extended and renovated throughout by the current vendors and offers bright, spacious and flexible accommodation, coupled with an impressive private rear garden just over 120ft long and off-road parking at the front.

Accommodation

- The property is approached via a gravel driveway to the new composite front door which opens into the entrance hallway with red quarry tiled flooring and staircase rising to the first floor.
- Charming sitting room with aspect to front, central open fireplace with red quarry tiled surround and wood burning stove. Smart engineered oak flooring.
- Dining room with outlook to the rear over garden, continuation of engineered oak flooring.
- Ground floor w.c with a white suite comprising close coupled toilet, space saver vanity basin, cupboard housing combination boiler.
- Modern fitted kitchen fitted with a range of shaker style wall mounted cabinets and base units, floor to ceiling pantry style cupboard, ceramic butler sink, white solid quartz worktops and metro tiled splashback. Spaces for a rangemaster gas oven, American fridge/freezer, dishwasher, washing machine and tumble dryer. Underfloor electric heating with white stone tiles. French doors leading to rear garden and decking.
- Main bedroom with aspect to front over rolling Kent countryside and fitted wardrobes. Second bedroom enjoying the same views and currently utilised as a study, third and fourth bedrooms having an aspect to rear with views over the garden.
- Striking contemporary refitted family bathroom fitted with a white suite comprising white freestanding bath, vanity basin with painted cupboard, walk in shower enclosure, Mira thermostatic shower with rainfall head, metro tiled splashback and gold fittings. Painted wall panelling to half height and wood effect engineered vinyl flooring.
- Gravel driveway, offering parking for several vehicles having brick edges and raised borders with established hedge lines offering privacy.



- The 120ft rear garden is mostly laid to lawn and level. With mature hedge borders offering privacy with a child friendly play area, summer house and space behind the summer house that could lend itself to create a larger garden, build a home office (subject to planning) or put a vegetable patch in.
- Services & Points of Note: Double storey extension completed in 2015. Mains electricity, water and drainage gas central heating, Double glazed windows throughout. Fibre broadband.
- Council Tax Band: D – Sevenoaks District Council
- EPC: C

Situation

Edenbridge is a medieval market town set in the Kent countryside with a selection of local amenities including independent shops, restaurants, chemist, hairdresser, town pubs, Waitrose, Lidl and Tesco Express with a traditional market held once a week.

The town benefits from two mainline stations, Edenbridge Town Station offering services to London Bridge/Victoria via Oxted and Edenbridge Station serving Tonbridge through to Reigate and London Bridge/Victoria via Redhill, in under an hour. The M25 can be easily accessed at either junction 6 at Godstone or Sevenoaks junction 5.

There is a primary school in Edenbridge and nearby villages including the sought-after primary schools in Four Elms, Crockham Hill and Chiddingstone. Secondary education options include Grammar, state and private, and can be found in towns including Tonbridge, Sevenoaks, Westerham, Oxted and Lingfield.

Recreational amenities include Edenbridge Leisure Centre with swimming pool, nearby Stangrove park, golf courses and several National Trust properties including the historic Hever Castle. More extensive shopping can be found in the towns of Sevenoaks, Oxted, East Grinstead and Tunbridge Wells, or Bluewater Shopping Centre.



Viewing Strictly By Appointment

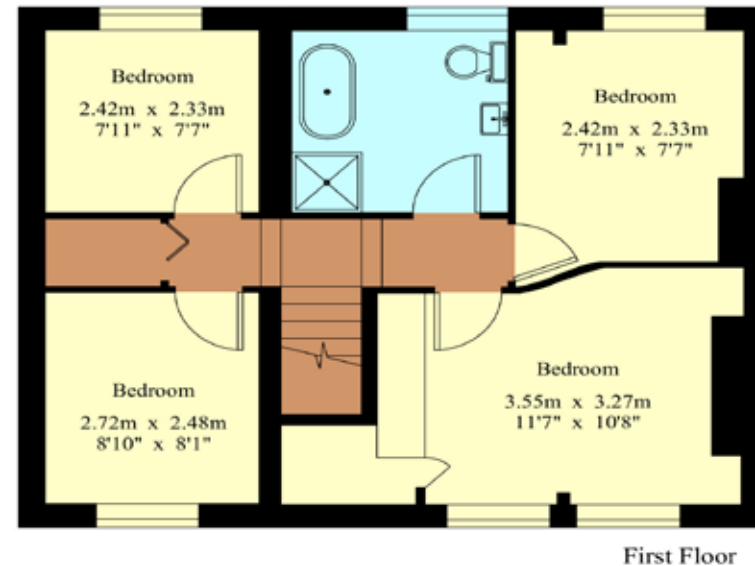
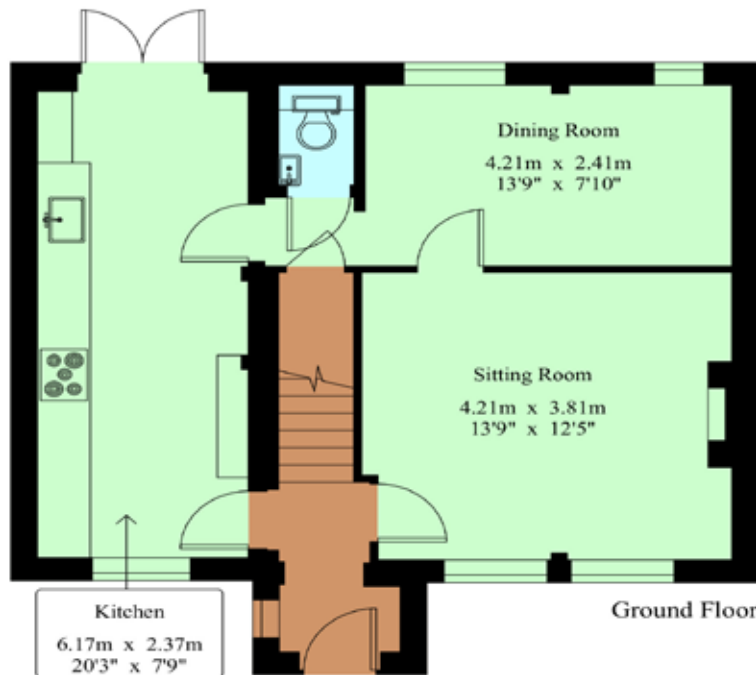
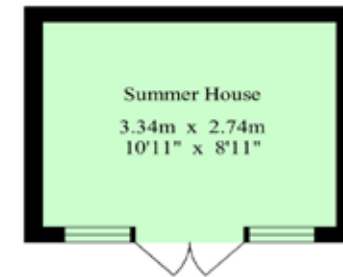
01732 834835

www.jamesmillard.co.uk
hildenborough@jamesmillard.co.uk

102 Lingfield Road

House - Gross Internal Area : 101.9 sq.m (1096 sq.ft.)

Summer House - Gross Internal Area : 9.13 sq.m (98 sq.ft.)



For Identification Purposes Only.
© 2025 Trueplan (UK) Limited (01892) 614 881

James Millard Independent Estate Agents, their clients and any joint agents give notice that: 1.They have no authority to make or give any representations or warranties in relation to the property. These particulars are given in good faith and are to be treated as a general guide only and do not constitute any part of an offer or a contract and must not be relied upon as statements or representations of fact. All statements contained in these particulars are made without any responsibility on the part of James Millard Independent Estate Agents or the vendor or lessor of this property. Any intending purchasers must satisfy themselves by inspection or otherwise as to the correctness of each of the statements contained in these particulars. If any points are particularly relevant to your interest in the property please ask for further information. 2. Any areas, measurements or distances are approximate. The text, photographs and plans are for guidance only and are not necessarily comprehensive. It should not be assumed that the property has all necessary planning, building regulation or other consents. 3. It should not be assumed that any contents, furnishings, furniture etc photographed are included in the sale, nor that the property remains as displayed in the photographs. No assumptions should be made with regard to parts of the property that have not been photographed. 4. Prospective purchasers are advised to satisfy themselves as to the working order of any apparatus, equipment, fixtures and fittings or services where applicable. Whilst they may be mentioned in the particulars, they have not been tested by the Agents. J205

