



jordan fishwick

126 School Lane, M20 6LB
Guide Price £1,295 Per Calendar Month



School Lane Didsbury M20 6LB

£1,295 Per Calendar Month



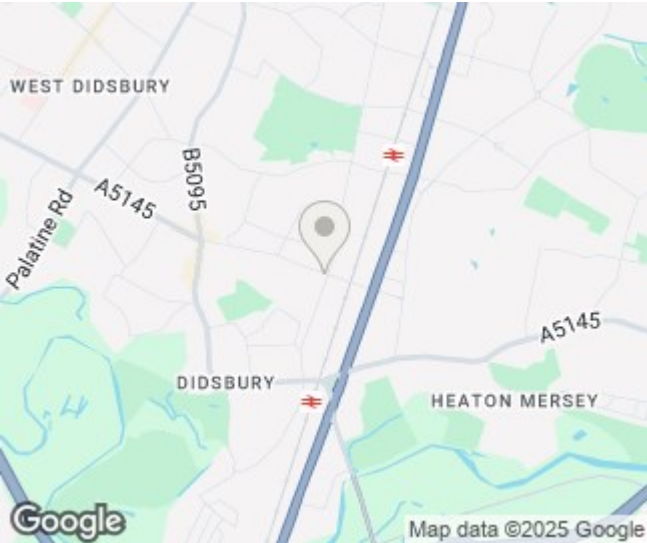
The Property

*** AVAILABLE JULY *** Jordan Fishwick are delighted to bring to the rental market this spacious two double bedroom ground floor apartment. Located on School Lane in Didsbury this property is ideally suited to a couple, small family or max 2 sharers. It is in a great location, close to local shops, Didsbury Village and the Metrolink as well as motorway links. In brief the property comprises; entrance hall with two storage cupboards, large lounge area, fully fitted kitchen with appliances, two double bedrooms and a three piece family bathroom suite. The property benefits from double glazing, electric heating, and allocated off road parking for one car. Offered on a furnished basis. Contact our Didsbury office to arrange a viewing

View our Virtual Tour Here - <https://youtu.be/zCGRL-A4jJ0>

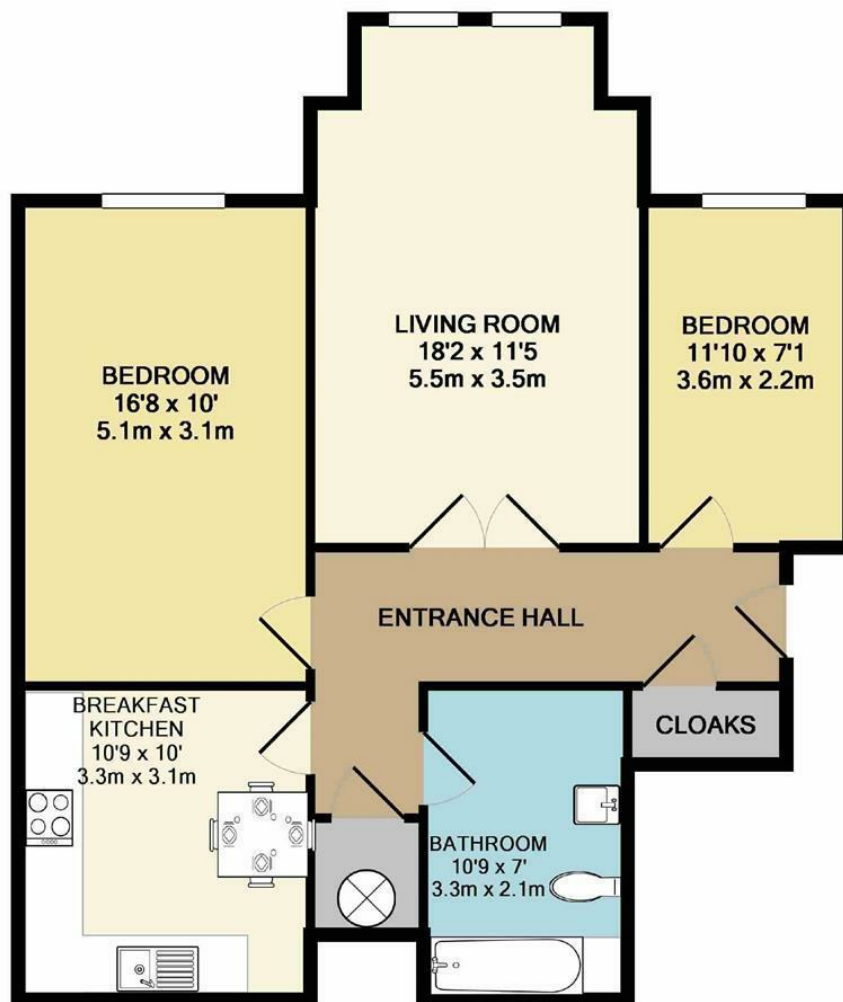
EPC Rating C // Council Tax Band D

- Available July
- Two Double Bedrooms
- Ground Floor Apartment
- Furnished
- Great Location of Didsbury
- Ideal for Couple or Sharers
- Modern in Design Throughout
- Allocated Parking
- Council Tax Band D
- EPC Rating C



Energy Efficiency Rating		
	Current	Potential
Very energy efficient - lower running costs		
(92 plus) A		
(81-91) B		
(69-80) C	73	80
(55-68) D		
(39-54) E		
(21-38) F		
(1-20) G		
Not energy efficient - higher running costs		
England & Wales	EU Directive 2002/91/EC	





TOTAL APPROX. FLOOR AREA 759 SQ.FT. (70.6 SQ.M.)
 Measurements are approximate. Not to scale. Illustrative purposes only
 Made with Metropix ©2017



These particulars are believed to be accurate but they are not guaranteed and do not form a contract. Neither Jordan Fishwick nor the vendor or lessor accept any responsibility in respect of these particulars, which are not intended to be statements or representations of fact and any intending purchaser or lessee must satisfy himself by inspection or otherwise as to the correctness of each of the statements contained in these particulars. Any floorplans on this brochure are for illustrative purposes only and are not necessarily to scale.

Offices at: Chorlton, Didsbury, Disley, Hale, Glossop, Macclesfield, Manchester Deansgate, Manchester Whitworth Street, New Mills, Sale, Wilmslow and Withington