



*jordan fishwick*

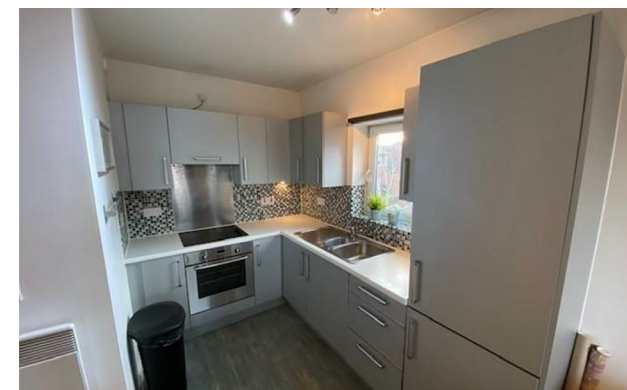
63 The Boulevard, M20 2EU  
Guide Price £1,350 Per Calendar Month





## The Boulevard West Didsbury M20 2EU

£1,350 Per Calendar Month



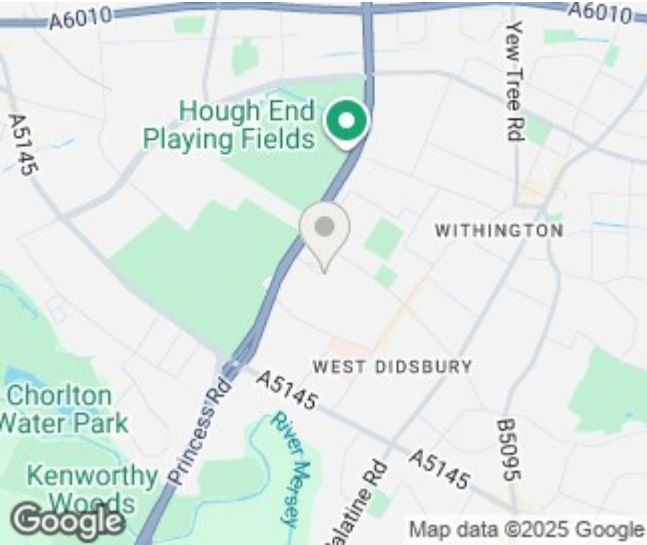
### The Property


\*\*\* AVAILABLE SEPTEMBER \*\*\* A modern two-bedroom apartment situated in fashionable development in West Didsbury, close to local bars & shops and only a 10-minute walk to the Metrolink making it ideal for a professional couple or sharers. The apartment is thoughtfully laid out and in outline comprises: - Communal entrance hall, generous private entrance hall, open plan living/kitchen area with a range of fitted units, two double bedrooms, the main with fitted wardrobes, en-suite shower room and a balcony and a main bathroom that completes the internal living space. The apartment also benefits from double glazing and electric heating. Externally there is a gated residents car park to the rear with allocated & visitor parking. Fully Furnished. Contact our Didsbury office to arrange a viewing.

View our Virtual Tour Here - <https://youtu.be/-yNyBltwap0>

EPC Rating - C // Council Tax Band C

- Available September
- Two Double Bedrooms
- Two Bathrooms
- Ideal for a Couple or Sharers
- Furnished
- Balcony
- Great Location of West Didsbury
- Residence Parking
- Council Tax Band C
- EPC Rating C



Energy Efficiency Rating		
	Current	Potential
Very energy efficient - lower running costs		
(92 plus) <b>A</b>		
(81-91) <b>B</b>		
(69-80) <b>C</b>	75	81
(55-68) <b>D</b>		
(39-54) <b>E</b>		
(21-38) <b>F</b>		
(1-20) <b>G</b>		
Not energy efficient - higher running costs		
<b>England &amp; Wales</b>	EU Directive 2002/91/EC 	





These particulars are believed to be accurate but they are not guaranteed and do not form a contract. Neither Jordan Fishwick nor the vendor or lessor accept any responsibility in respect of these particulars, which are not intended to be statements or representations of fact and any intending purchaser or lessee must satisfy himself by inspection or otherwise as to the correctness of each of the statements contained in these particulars. Any floorplans on this brochure are for illustrative purposes only and are not necessarily to scale.

Offices at: Chorlton, Didsbury, Disley, Hale, Glossop, Macclesfield, Manchester Deansgate, Manchester Whitworth Street, New Mills, Sale, Wilmslow and Withington