



*jordanfishwick*

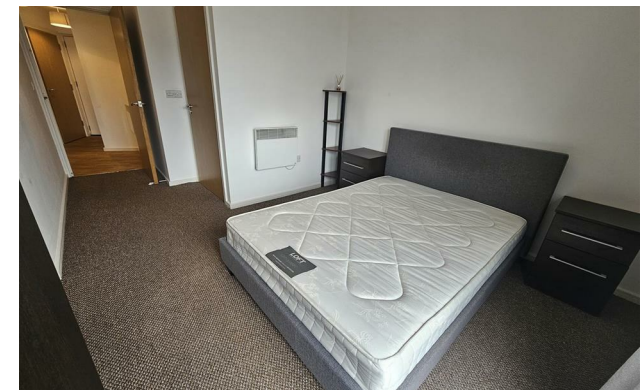
Apt 29 The Drum, 2 Stuart Street, M11 4DG  
£1,050 Per Calendar Month





## The Drum Sport City M11 4DG

£1,050 Per Calendar Month



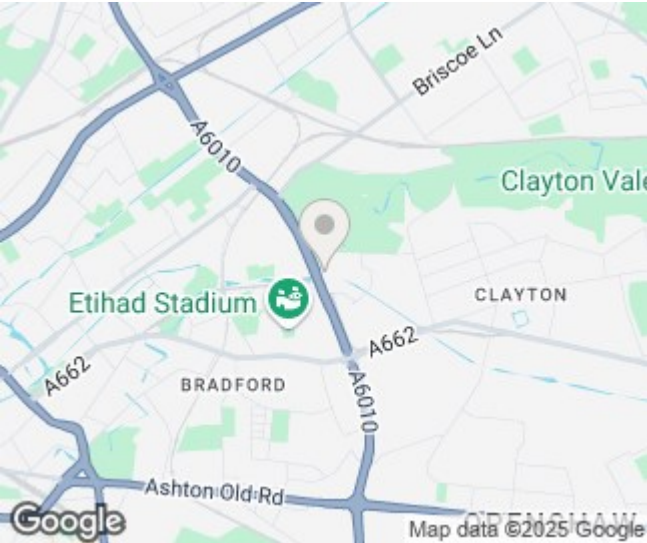
### The Property


Available Early April. Jordan Fishwick are pleased to present this fourth floor, two double bedroom apartment in the popular Sport City area. Located just a short distance from Manchester City Centre on the newly extended metrolink, the property is just a stone's throw from the Sports City site with the Velodrome Etihad Campus and Asda Supermarket. Accommodation comprises of entrance hall with washer/dryer, living room and decked balcony with views, fitted kitchen with all appliances, master bedroom and second double bedroom. Attractive three piece white bathroom suite. Furnished. Secure allocated parking. Council Tax Band C. EPC Rating B.

**\*VIDEO/ PHOTO OFFERS NOT ACCEPTED - PLEASE CALL TO BOOK A VIEWING\***



- Available Early April
- Fourth Floor
- Furnished with Parking
- Two Bedrooms with Balcony
- Council Tax Band C
- Sport City Location
- Close to Supermarket & Transport Links
- EPC Rating B



Energy Efficiency Rating		
	Current	Potential
Very energy efficient - lower running costs		
(92 plus) A	81	87
(81-91) B		
(69-80) C		
(55-68) D		
(39-54) E		
(21-38) F	Not energy efficient - higher running costs	
(1-20) G		
England & Wales		EU Directive 2002/91/EC 





These particulars are believed to be accurate but they are not guaranteed and do not form a contract. Neither Jordan Fishwick nor the vendor or lessor accept any responsibility in respect of these particulars, which are not intended to be statements or representations of fact and any intending purchaser or lessee must satisfy himself by inspection or otherwise as to the correctness of each of the statements contained in these particulars. Any floorplans on this brochure are for illustrative purposes only and are not necessarily to scale.

Offices at: Offices at Chorlton, Didsbury, Disley, Hale, Glossop, Macclesfield, Manchester Deansgate, Manchester Whitworth Street, New Mills, Sale, Wilmslow and Withington