



*jordanfishwick*

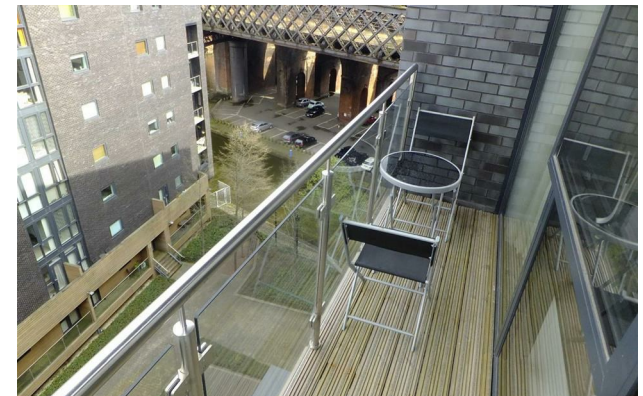
Apt 702 39 Potato Wharf, Whitworth, M3  
£1,375 Per Calendar Month





## 39 Potato Wharf Manchester M3 4AR

£1,375 Per Calendar Month



### The Property

Available Late May. Fantastic opportunity to rent an immaculate two bedroom, top floor apartment in the highly regarded Potato Wharf, in the heart of the historic area of Castlefield. Just a short walk to Deansgate and the City Centre, the property offers great living accommodation throughout. Entrance hallway with large walk in storage cupboard housing washer dryer and hot water cylinder, open plan lounge area leading to a decked balcony that runs the length of the apartment and overlooks the communal patio areas. There is a stylish and modern kitchen with top quality appliances such as integrated fridge freezer, dishwasher, oven, hob and microwave, and a large breakfast bar. There are two double bedrooms, the master with a king sized bed, and a walk in shower room. Large family bathroom with designer tiles, and bath with shower. Furnished, Secure Underground Parking also included. EPC rating C. Tax Band C.


**\*VIDEO/ PHOTO OFFERS NOT ACCEPTED - PLEASE CALL TO BOOK A VIEWING\***



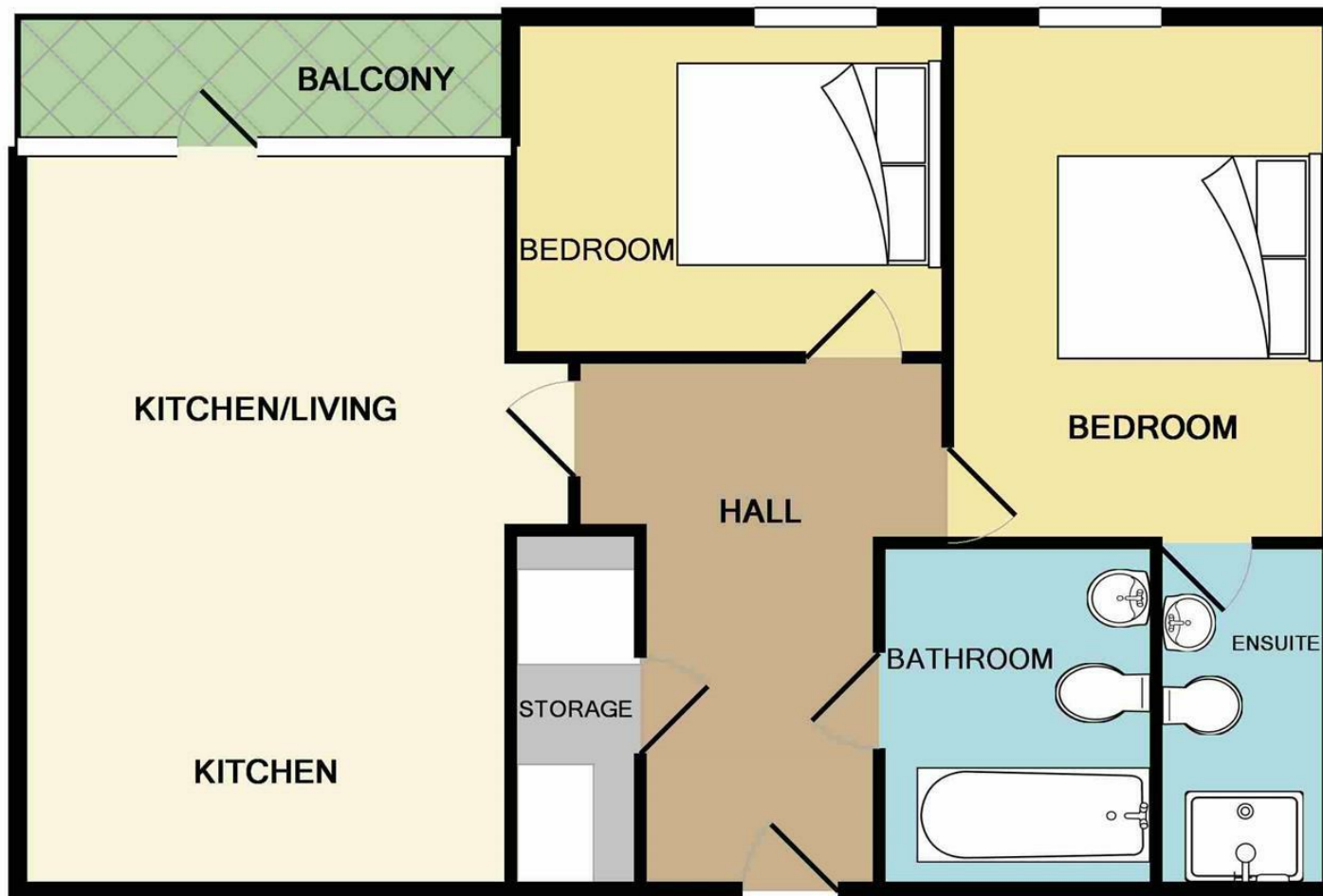


- LET AGREED
- Two Bedroom
- Furnished
- Balcony
- Fully furnished
- EPC rating C
- Tax Band C
- Close to Deansgate
- Secure Undergroud Parking



| Energy Efficiency Rating                    |                                                                                                             |           |
|---------------------------------------------|-------------------------------------------------------------------------------------------------------------|-----------|
|                                             | Current                                                                                                     | Potential |
| Very energy efficient - lower running costs |                                                                                                             |           |
| (92 plus) <b>A</b>                          |                                                                                                             |           |
| (81-91) <b>B</b>                            |                                                                                                             |           |
| (69-80) <b>C</b>                            | 74                                                                                                          | 74        |
| (55-68) <b>D</b>                            |                                                                                                             |           |
| (39-54) <b>E</b>                            |                                                                                                             |           |
| (21-38) <b>F</b>                            |                                                                                                             |           |
| (1-20) <b>G</b>                             |                                                                                                             |           |
| Not energy efficient - higher running costs |                                                                                                             |           |
| <b>England &amp; Wales</b>                  | EU Directive 2002/91/EC  |           |





Measurements are approximate. Not to scale. Illustrative purposes only  
Made with Metropix ©2019



These particulars are believed to be accurate but they are not guaranteed and do not form a contract. Neither Jordan Fishwick nor the vendor or lessor accept any responsibility in respect of these particulars, which are not intended to be statements or representations of fact and any intending purchaser or lessee must satisfy himself by inspection or otherwise as to the correctness of each of the statements contained in these particulars. Any floorplans on this brochure are for illustrative purposes only and are not necessarily to scale.

Offices at: Offices at Chorlton, Didsbury, Disley, Hale, Glossop, Macclesfield, Manchester Deansgate, Manchester Whitworth Street, New Mills, Sale, Wilmslow and Withington