



jordan fishwick

2 Stuart Court, Off Abbey Road, SK10 3AZ
PCM £795 PCM



Stuart Court Macclesfield SK10 3AZ

£795 PCM



AVAILABLE NOW UNFURNISHED - VIEWING RECOMMENDED

Located on this quiet highly regarded road within walking distance of the town centre and hospital is this spacious ONE bedroom apartment. Local shops are within easy reach and The Bollin is also only a short walk away.

With off road parking and double-glazed windows this ground floor apartment is ideal for the single professional or couple.

Communal entrance hall, private entrance hall, large open plan lounge/dining room, modern fitted kitchen with electric hob and oven, good sized double bedroom bathroom with shower over bath,

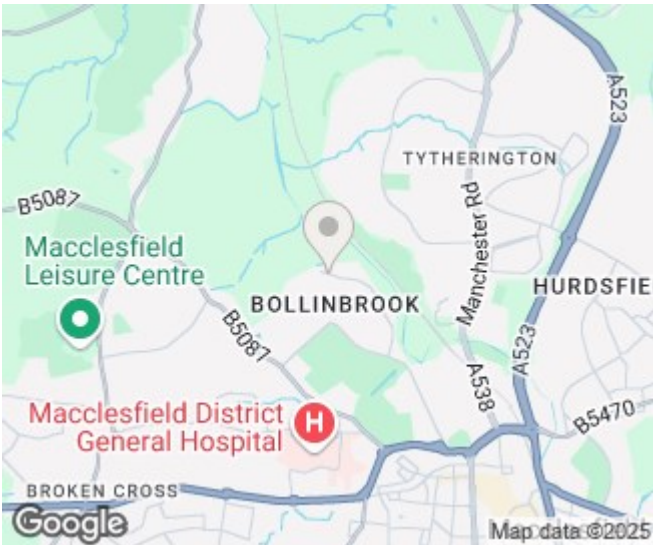
Contact Macclesfield office on 01625 502222. £795.00pcm


COUNCIL TAX A

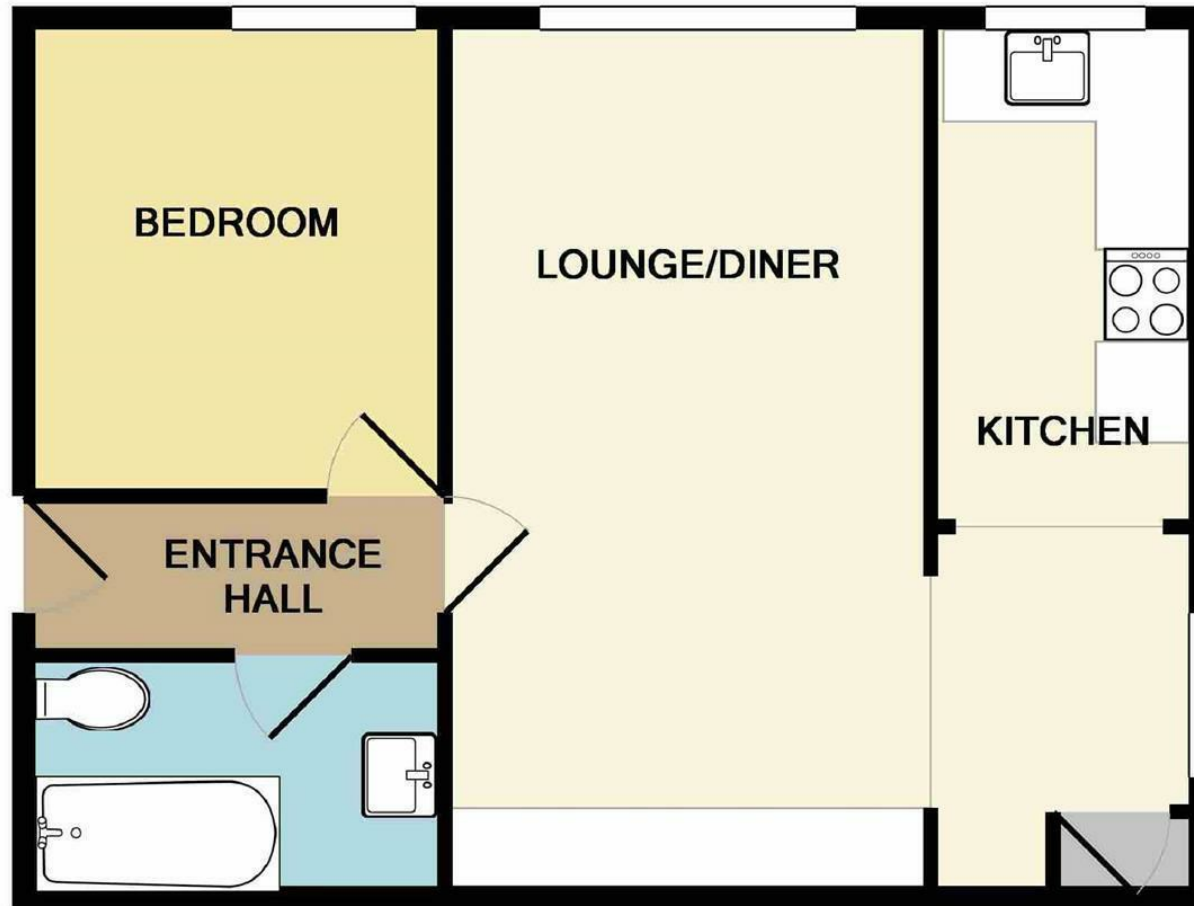
EPC E



- GROUND FLOOR APARTMENT
- ONE DOUBLE BEDROOM
- EASY REACH OF TOWN CENTRE
- SPACIOUS OPEN PLAN LIVING AREA
- OFF ROAD PARKING
- COUNCIL TAX A
- EPC E



Energy Efficiency Rating		
	Current	Potential
Very energy efficient - lower running costs		
(92 plus) A		76
(81-91) B		
(69-80) C		
(55-68) D		
(39-54) E	54	
(21-38) F		
(1-20) G		
Not energy efficient - higher running costs		
England & Wales		EU Directive 2002/91/EC 



Measurements are approximate. Not to scale. Illustrative purposes only
Made with Metropix ©2018



These particulars are believed to be accurate but they are not guaranteed and do not form a contract. Neither Jordan Fishwick nor the vendor or lessor accept any responsibility in respect of these particulars, which are not intended to be statements or representations of fact and any intending purchaser or lessee must satisfy himself by inspection or otherwise as to the correctness of each of the statements contained in these particulars. Any floorplans on this brochure are for illustrative purposes only and are not necessarily to scale.

Offices at: Chorlton, Didsbury, Disley, Hale, Glossop, Macclesfield, Manchester Deansgate, Manchester Whitworth Street, New Mills, Sale, Wilmslow and Withington

172 Ashley Road, Hale, Cheshire, WA15 9F
01625 502222 letting

halemanagement@jordanfishwick.co.uk
www.jordanfishwick.co.uk