



jordan fishwick

15 Sandringham Court, Cavendish Mews,
Guide Price £350,450



Sandringham Court Wilmslow

Guide Price £350,450




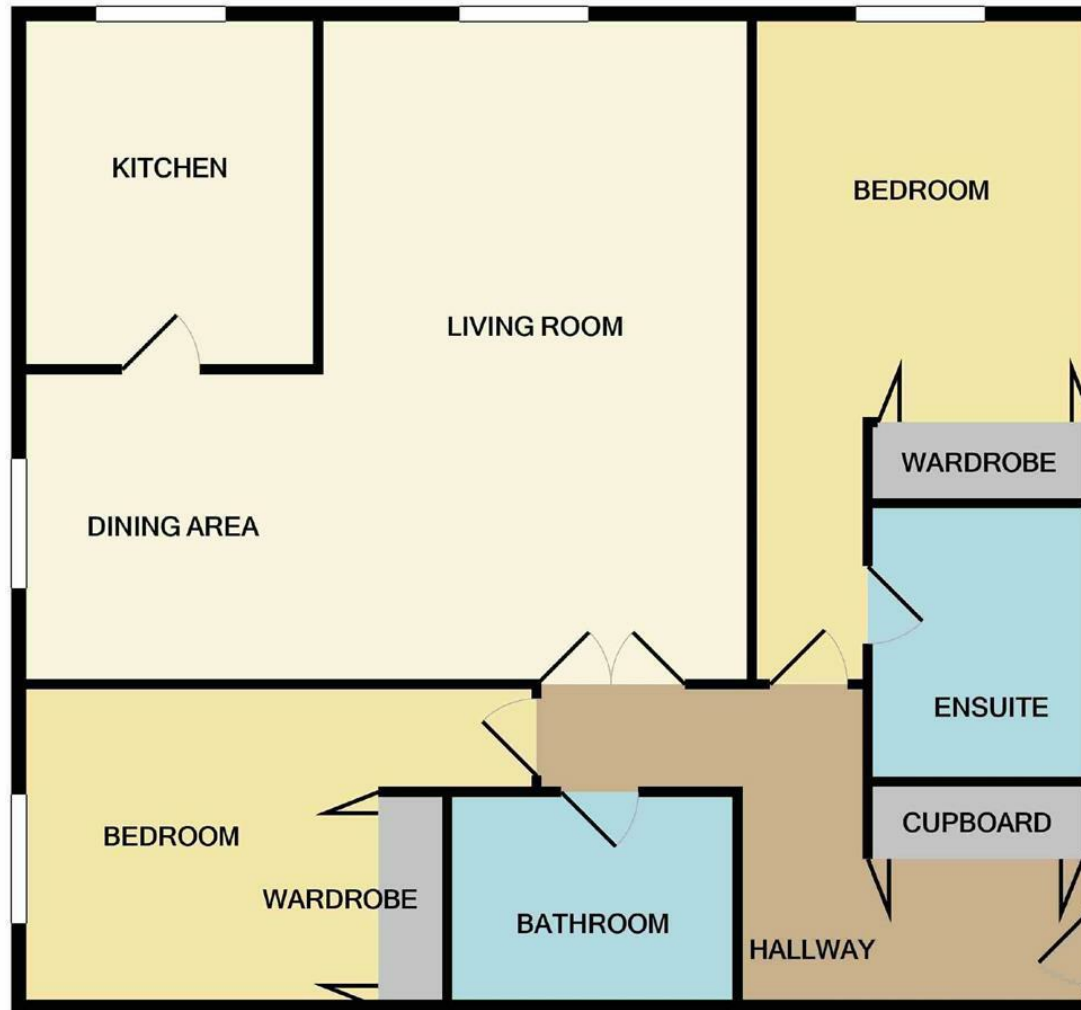
This delightful and well proportioned two bedroom, two bathroom, top floor apartment is set within the heart of Wilmslow, within a short stroll of various shops, restaurants and amenities. Wilmslow train station offers a direct service to London Euston and Manchester City centre and the property is well placed for easy access to the M56 for commuters to Manchester and the North West commercial centres and Manchester Airport is less than 20 minutes away. The accommodation briefly comprises: open plan living room/dining room area with, breakfast kitchen, master bedroom with en-suite bathroom and fitted wardrobes, bedroom two with fitted wardrobes, and a further four piece bathroom. The property also benefits from gas fired central heating and has a single garage. The block also benefits from lift access to all floors. Internal viewing is highly recommended.



- Top Floor Apartment
- Two Bedrooms
- Two Bathrooms
- Breakfast Kitchen
- Convenient location
- Lift access to all floors
- Garage
- Viewing highly recommended



Energy Efficiency Rating		
	Current	Potential
Very energy efficient - lower running costs		
(92 plus) A		
(81-91) B		
(69-80) C		79
(55-68) D	67	
(39-54) E		
(21-38) F		
(1-20) G		
Not energy efficient - higher running costs		
England & Wales	EU Directive 2002/91/EC 	



Measurements are approximate. Not to scale. Illustrative purposes only
Made with Metropix ©2021



These particulars are believed to be accurate but they are not guaranteed and do not form a contract. Neither Jordan Fishwick nor the vendor or lessor accept any responsibility in respect of these particulars, which are not intended to be statements or representations of fact and any intending purchaser or lessee must satisfy himself by inspection or otherwise as to the correctness of each of the statements contained in these particulars. Any floorplans on this brochure are for illustrative purposes only and are not necessarily to scale.

Offices at: Chorlton, Didsbury, Disley, Hale, Glossop, Macclesfield, Manchester Deansgate, Manchester Whitworth Street, New Mills, Sale, Wilmslow and Withington

36-38 Alderley Road, Wilmslow SK91JX

01625 532000

wilmslow@jordanfishwick.co.uk

www.jordanfishwick.co.uk