



*jordan fishwick*

22 Wingfield Avenue, SK9 6AL  
Guide Price £599,950



# Wingfield Avenue Wilmslow SK9 6AL

Guide Price £599,950



**\*\* BEAUTIFULLY EXTENDED WITH A FABULOUS LIVING DINING KITCHEN\*\*** This FOUR BEDROOM extended and renovated property is situated in an enviable SOUTH WILMSLOW location. The present owners have given careful consideration during their residence, resulting in a distinguished development of considerable merit throughout, offering a fabulous blend of modern day comforts and an elegant interior providing a truly lovely home. The immaculate accommodation comprises in brief: substantial entrance hallway, bay fronted living room with feature fireplace, stunning 23' living kitchen diner with sliding doors leading to rear garden, utility room and a wc. To the first floor there are three good sized double bedrooms with the main bedroom benefitting from an en-suite. There is a further fourth bedroom and a stylish family bathroom. Externally there is a low maintenance rear garden with a paved patio area. To the front is a large driveway with space for multiple vehicles. VIEWINGS ESSENTIAL TO FULLY APPRECIATE.










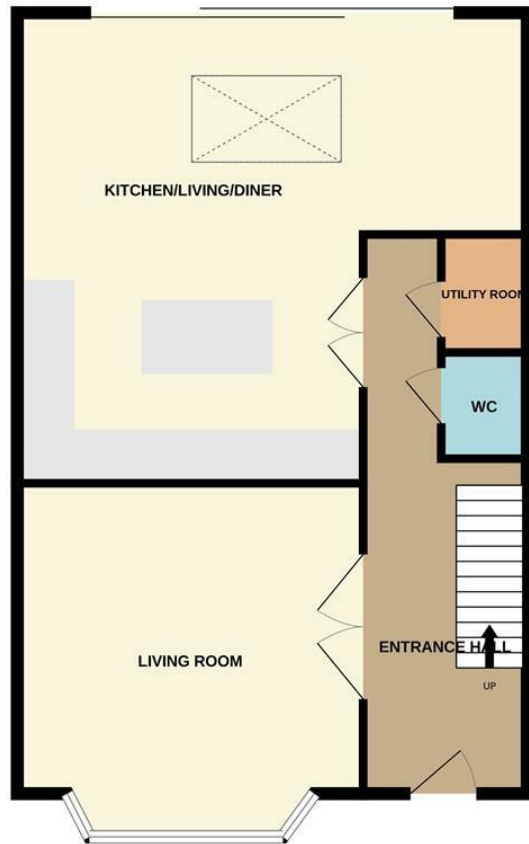
- Semi Detached
- Four Bedrooms
- Stunning Living/Kitchen/Diner
- Two Bathrooms
- Extended Accommodation
- South Wilmslow location
- Close to open countryside
- Off Road Parking



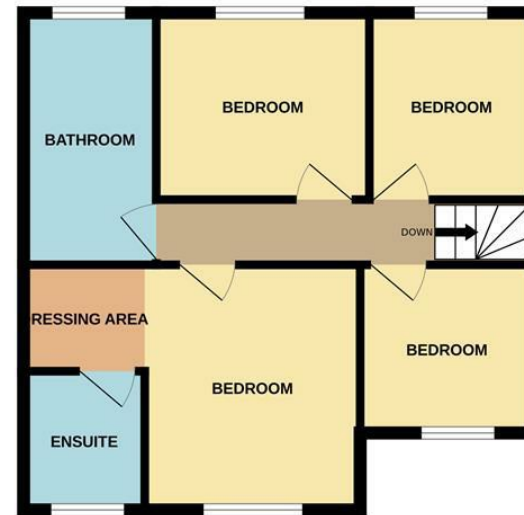
Energy Efficiency Rating		
	Current	Potential
Very energy efficient - lower running costs		
(92 plus) <b>A</b>		<b>74</b>
(81-91) <b>B</b>		
(69-80) <b>C</b>		
(55-68) <b>D</b>	<b>53</b>	
(39-54) <b>E</b>		
(21-38) <b>F</b>		
(1-20) <b>G</b>		
Not energy efficient - higher running costs		
<b>England &amp; Wales</b>		EU Directive 2002/91/EC 



GROUND FLOOR



1ST FLOOR



Measurements are approximate. Not to scale. Illustrative purposes only.  
Made with Metropix ©2023



These particulars are believed to be accurate but they are not guaranteed and do not form a contract. Neither Jordan Fishwick nor the vendor or lessor accept any responsibility in respect of these particulars, which are not intended to be statements or representations of fact and any intending purchaser or lessee must satisfy himself by inspection or otherwise as to the correctness of each of the statements contained in these particulars. Any floorplans on this brochure are for illustrative purposes only and are not necessarily to scale.

Offices at: Chorlton, Didsbury, Disley, Hale, Glossop, Macclesfield, Manchester Deansgate, Manchester Whitworth Street, New Mills, Sale, Wilmslow and Withington

36-38 Alderley Road, Wilmslow SK91JX  
**01625 532000**

wilmslow@jordanfishwick.co.uk  
www.jordanfishwick.co.uk