



jordan fishwick

34 The Circuit, SK9 6DB
Guide Price £479,950



The Circuit WILMSLOW SK9 6DB

Guide Price £479,950



NO CHAIN. Take a look into this newly renovated home, situated within an extremely popular cul-de-sac location within South Wilmslow. This traditional three bedroom semi detached property with a partially modern rendered fascia is located close to open countryside and within walking distance of local shops on Chapel Lane. The property in brief comprises: entrance hall and porch space, stylish downstairs WC, generously sized open plan living / dining room, with continuous laminate flooring throughout. this highly sociable open plan space adjoins the kitchen. This contemporary style kitchen features a number of integrated appliances, a gas combination boiler and provides access to the rear garden space. To the first floor there are three bedrooms and a refitted contemporary three-piece suite family bathroom with complimentary tiling and suitable under sink vanity unit. Externally, to the front aspect a generously proportioned driveway for two car parking spaces and access to the detached garage with a remote control electric garage door. To the rear an excellent sized garden featuring partial decking, fashionable laid patio and green lawn area. A further excellent feature is the wood cladded outbuilding making an ideal space for an office or workshop. Viewings essential.





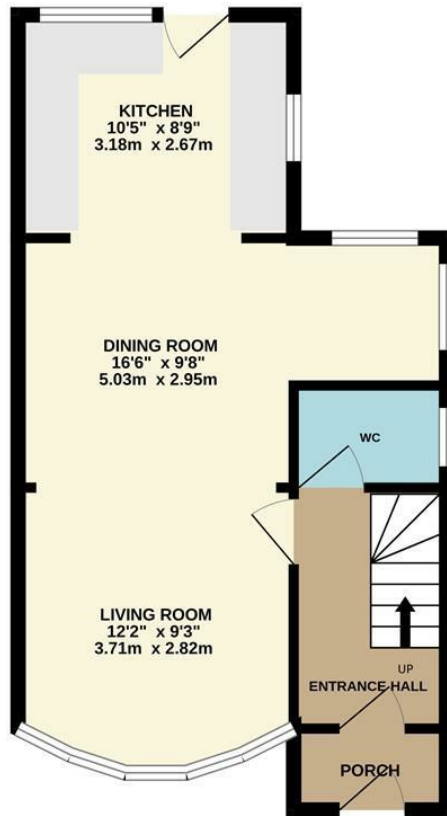
- Three Bedrooms
- Semi Detached
- Cul de Sac position
- Off road parking
- Garage and carport
- Garden
- South Wilmslow location
- No Chain



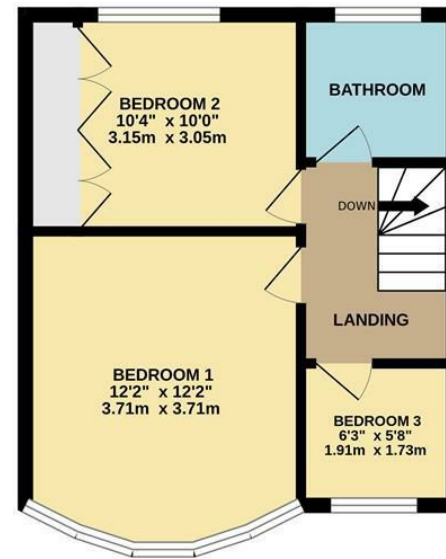
| Energy Efficiency Rating | | |
|---|----------------------------|-----------|
| | Current | Potential |
| Very energy efficient - lower running costs | | |
| (92 plus) A | | |
| (81-91) B | | 84 |
| (69-80) C | 70 | |
| (55-68) D | | |
| (39-54) E | | |
| (21-38) F | | |
| (1-20) G | | |
| Not energy efficient - higher running costs | | |
| England & Wales | EU Directive 2002/91/EC | |



GROUND FLOOR



1ST FLOOR



Measurements are approximate. Not to scale. Illustrative purposes only.
Made with Metropix ©2024



These particulars are believed to be accurate but they are not guaranteed and do not form a contract. Neither Jordan Fishwick nor the vendor or lessor accept any responsibility in respect of these particulars, which are not intended to be statements or representations of fact and any intending purchaser or lessee must satisfy himself by inspection or otherwise as to the correctness of each of the statements contained in these particulars. Any floorplans on this brochure are for illustrative purposes only and are not necessarily to scale.

Offices at: Chorlton, Didsbury, Disley, Hale, Glossop, Macclesfield, Manchester Deansgate, Manchester Whitworth Street, New Mills, Sale, Wilmslow and Withington

36-38 Alderley Road, Wilmslow SK91JX
01625 532000

wilmslow@jordanfishwick.co.uk
www.jordanfishwick.co.uk