



jordan fishwick

34 Finsbury Way, SK9 3AQ
Guide Price £161,950



Finsbury Way Handforth SK9 3AQ

Guide Price £161,950



Shared Equity. Jordan Fishwick are pleased to offer this two bedroom ground floor apartment with private access, located just a short walk away from Handforth Centre. This property is part of the Cheshire East Council's Covenant Scheme and is offered at a 18% discounted price. Conditions apply as part of this shared equity scheme with the advertising price representing 82% of the total value with no rent to pay on the 18%. This is an excellent opportunity for people who could not ordinarily afford to purchase. For eligibility information, please contact our branch. Taking a look into the accommodation which has its own private entrance and briefly comprises: entrance porch, living room, kitchen, inner hallway leading to two well proportioned bedrooms and a modern bathroom. Externally the property offers one off-road parking space and a private and secluded position with communal gardens. Viewings essential for this great opportunity. There is no additional rent pay on this shared equity.

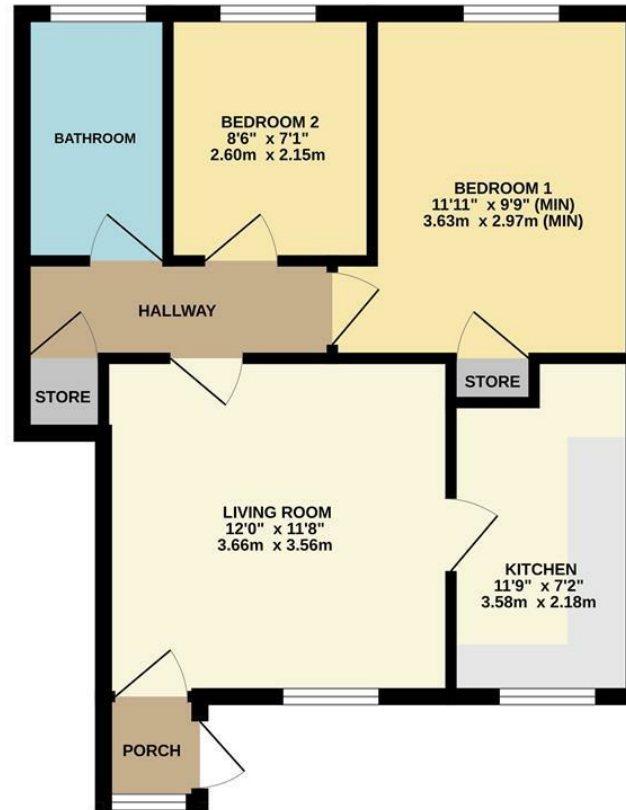


- Shared Equity Scheme
- Great Opportunity
- Two Bedroom Apartment
- Off Road Parking
- Modernised Living / Dining Space
- Walking Distance of Handforth Centre
- Stylish Kitchen
- Family Three Piece Bathroom



Energy Efficiency Rating		
	Current	Potential
Very energy efficient - lower running costs		
(92 plus) A		
(81-91) B		
(69-80) C	74	76
(55-68) D		
(39-54) E		
(21-38) F		
(1-20) G		
Not energy efficient - higher running costs		
England & Wales	EU Directive 2002/91/EC	

GROUND FLOOR



Measurements are approximate. Not to scale. Illustrative purposes only.
Made with Metropix ©2025



These particulars are believed to be accurate but they are not guaranteed and do not form a contract. Neither Jordan Fishwick nor the vendor or lessor accept any responsibility in respect of these particulars, which are not intended to be statements or representations of fact and any intending purchaser or lessee must satisfy himself by inspection or otherwise as to the correctness of each of the statements contained in these particulars. Any floorplans on this brochure are for illustrative purposes only and are not necessarily to scale.

Offices at: Chorlton, Didsbury, Disley, Hale, Glossop, Macclesfield, Manchester Deansgate, Manchester Whitworth Street, New Mills, Sale, Wilmslow and Withington

36-38 Alderley Road, Wilmslow SK91JX
01625 532000

wilmslow@jordanfishwick.co.uk
www.jordanfishwick.co.uk