



Apt 50 Britannia Mills, Hulme Hall Road, Castlefield, Manchester, M15 4LA

Jordan Fishwick are pleased to offer for sale this stunning one bedroom apartment at Britannia Mills in Castlefield! This charming apartment offers a unique living experience in a converted mill, blending history with modern comfort. The property features a large reception room, perfect for relaxing or entertaining guests. Up the stairs into the mezzanine bedroom, a delightful space that adds character to the apartment. The renovated shower room provides a touch of luxury, offering a refreshing retreat after a long day. The building is situated close to Deansgate, you'll have easy access to a vibrant array of shops, restaurants, and entertainment options. Don't miss this opportunity to own a piece of history in a convenient and sought-after location. NO ONWARD CHAIN.

Price £224,500

Viewing arrangements

Viewing strictly by appointment through the agent

245 Deansgate, Manchester, M3 4EN 0161 833 9499 opt 3

Living Room

23'9" x 15'2"

Fitted carpet. Ceiling light. Intercom. Electric heater. Access to balcony. Telephone point.

Kitchen

9'1" x 7'7"

Range of wall and base units with worktops over. Sink with mixer tap. Cooker with hob and extractor over. Fridge with freezer box. Under stairs cupboard housing washing machine. Spotlights.

Bedroom

13'6" x 11'3"

Wooden flooring. Wall lights. Cupboard housing water tank.

TV point. Cupboard housing water tank and some storage space.

Shower Room

Fully tiled. Low level W/C. Sink with mixer tap. Shower cubical with mixer shower.

Externally

Private balcony. Lifts to all floors. Residents gym.

Additional Information

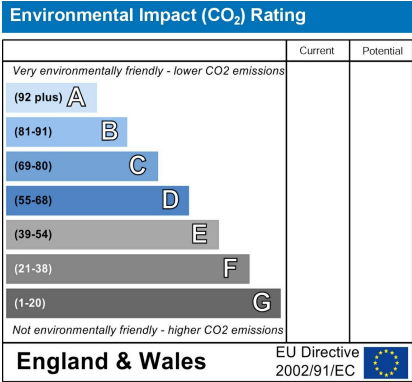
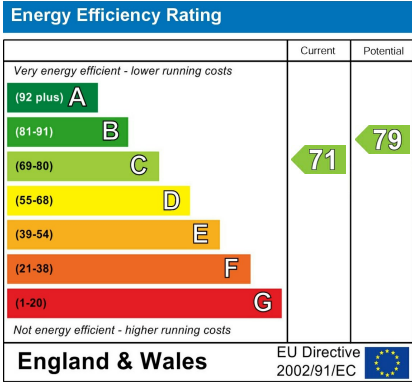
Ground rent - Peppercorn

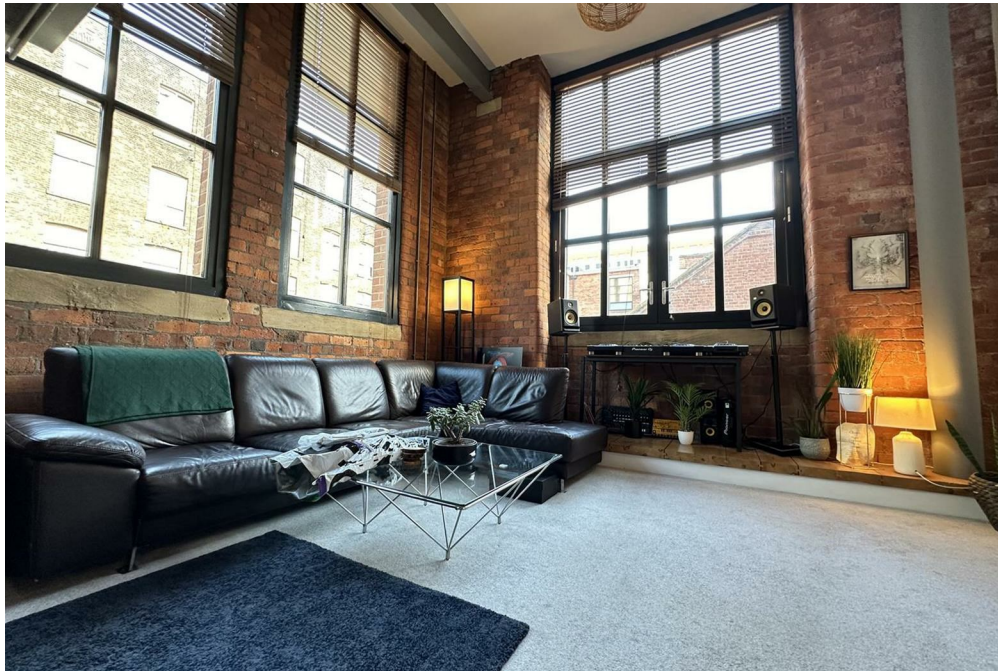
Service charge - £146.44pcm

Lease - 999 years from 1 January 1999

Sinking Fund - When the owner comes to sell the

apartment, they will be required to pay 0.25% of the sale price x
by the amount of years owned.

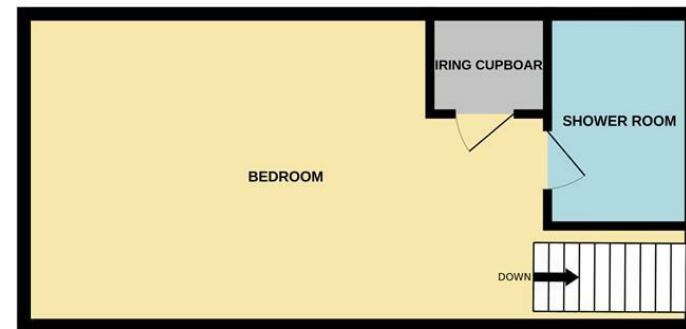




LOWER FLOOR



1ST FLOOR



Measurements are approximate. Not to scale. Illustrative purposes only
Made with Metropix ©2024



These particulars are believed to be accurate but they are not guaranteed and do not form a contract. Neither Jordan Fishwick nor the vendor or lessor accept any responsibility in respect of these particulars, which are not intended to be statements or representations of fact and any intending purchaser or lessee must satisfy himself by inspection or otherwise as to the correctness of each of the statements contained in these particulars. Any floorplans on this brochure are for illustrative purposes only and are not necessarily to scale.

Offices at: Chorlton, Didsbury, Disley, Hale, Glossop, Macclesfield, Manchester Deansgate, Manchester Whitworth Street, New Mills, Sale, Wilmslow and Withington

245 Deansgate, Manchester, M3 4EN

0161 833 9499 opt 3

manchester@jordanfishwick.co.uk

www.jordanfishwick.co.uk

