



jordan fishwick

BOWDON
Richmond Road



**Richmond Road,
Bowdon, WA14 3NW**

Price Guide £450,000



The Property

GUIDE PRICE £450.000 - £475,000 Located in the sought after village of Bowdon this stunning first floor apartment, within an exclusive development of eight properties is only a short walk into both Altrincham Town Centre and Hale Village. The apartment is immaculately presented and boasts manicured communal grounds and communal security which is managed by Benchmark security Ltd.

The apartment includes an entrance hall, good sized lounge diner which is south facing and provides an abundance of natural light into the property, with access to a private balcony, a fully integrated breakfast kitchen, a four piece main bathroom suite and two double bedrooms, both with fitted wardrobes and the main bedroom also includes an ensuite shower room. The apartment also comes with a fitted alarm system and intercom system.

There is lift access to the apartment floor and communal parking provided with the addition of a garage also included for the apartment.

Directions

WA14 3NW



- Stunning First Floor Apartment
- Lift Access
- Two Double Bedrooms
- Four Piece Main Bathroom and Ensuite to Main Bedroom
- Lounge Diner and Separate Breakfast Kitchen
- Local Bus Stop and Walking Distance to Altrincham Tram Stop
- Communal Parking and Garage
- Private Balcony
- Alarm System and Communal Security via Benchmark
- Walking Distance the Hale and Altrincham



Postcode - WA14 3NW

EPC Rating - C

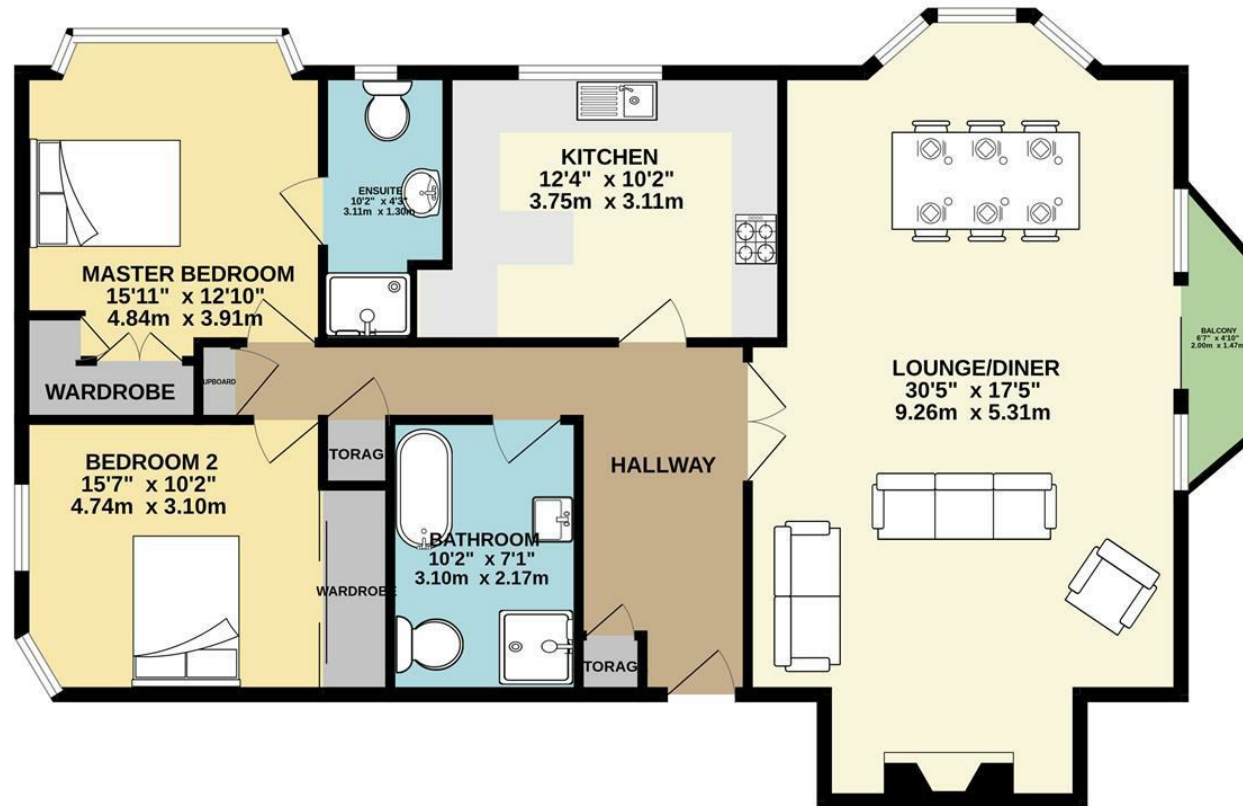
Floor Area - 1276.00 sq ft

Local Authority - Trafford

Council Tax - F



FIRST FLOOR
1276 sq.ft. (118.5 sq.m.) approx.



TOTAL FLOOR AREA : 1276 sq.ft. (118.5 sq.m.) approx.

Whilst every attempt has been made to ensure the accuracy of the floorplan contained here, measurements of doors, windows, rooms and any other items are approximate and no responsibility is taken for any error, omission or mis-statement. This plan is for illustrative purposes only and should be used as such by any prospective purchaser. The services, systems and appliances shown have not been tested and no guarantee as to their operability or efficiency can be given.
Made with Metropix ©2025



These particulars are believed to be accurate but they are not guaranteed and do not form a contract. Neither Jordan Fishwick nor the vendor or lessor accept any responsibility in respect of these particulars, which are not intended to be statements or representations of fact and any intending purchaser or lessee must satisfy himself by inspection or otherwise as to the correctness of each of the statements contained in these particulars. Any floorplans on this brochure are for illustrative purposes only and are not necessarily to scale.

Offices at: Chorlton, Didsbury, Disley, Hale, Glossop, Macclesfield, Manchester Deansgate, Manchester Whitworth Street, New Mills, Sale, Wilmslow and Withington

0161 929 9797

hale@jordanfishwick.co.uk
www.jordanfishwick.co.uk