



jordanfishwick

17 DIXON COURT CHELFORD SK11 9AU
PCM £1,150 PCM

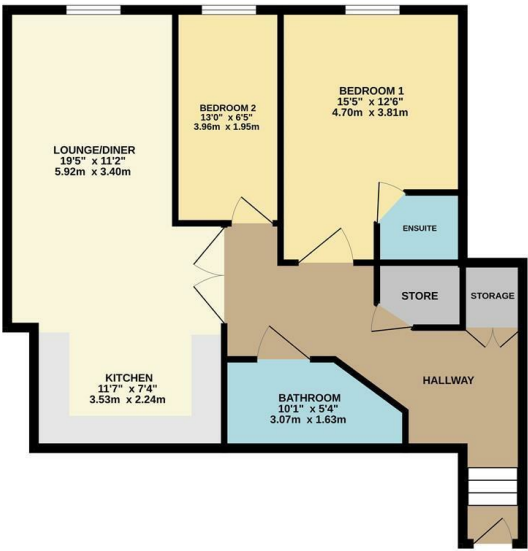
17 DIXON COURT CHELFORD SK11 9AU

AVAILABLE NOW PART FURNISHED - VIEWING HIGHLY RECOMMENDED

Located to the rear of this small exclusive development is this immaculately presented two bedroom apartment set in the popular village of Chelford. With secure gated parking along with a spacious interior, two double bedrooms and two bathrooms and only a short drive to Macclesfield, Knutsford, Alderley Edge and Wilmslow along with being within easy reach of the motorway networks and Manchester International Airport. Entrance hall with storage, open plan lounge diner with modern fitted kitchen with fridge freezer, microwave, electric hob and oven, dishwasher and washer dryer, two double bedrooms master with en suite shower room and main bathroom with shower over bath. Contact Wilmslow 01625 536300 £1150.00pcm COUNCIL TAX C EPC C



GROUND FLOOR



Measurements are approximate. Not to scale. Illustrative purposes only. Made with Design CAD2D

- TWO DOUBLE BEDROOMS
- TWO BATHROOMS
- GATED
- SECOND FLOOR
- VILLAGE LOCATION
- COUNCIL TAX C
- EPC C



Energy Efficiency Rating		
	Current	Potential
Very energy efficient - lower running costs		
(92 plus) A		
(81-91) B		
(69-80) C		
(55-68) D		
(39-54) E		
(21-38) F		
(1-20) G		
Not energy efficient - higher running costs		
England & Wales	EU Directive 2002/91/EC	81

Environmental Impact (CO ₂) Rating		
	Current	Potential
Very environmentally friendly - lower CO ₂ emissions		
(92 plus) A		
(81-91) B		
(69-80) C		
(55-68) D		
(39-54) E		
(21-38) F		
(1-20) G		
Not environmentally friendly - higher CO ₂ emissions		
England & Wales	EU Directive 2002/91/EC	