



*jordanfishwick*

49 THE CLOISTERS CHEADLE SK8 2JP  
PCM £850 PCM



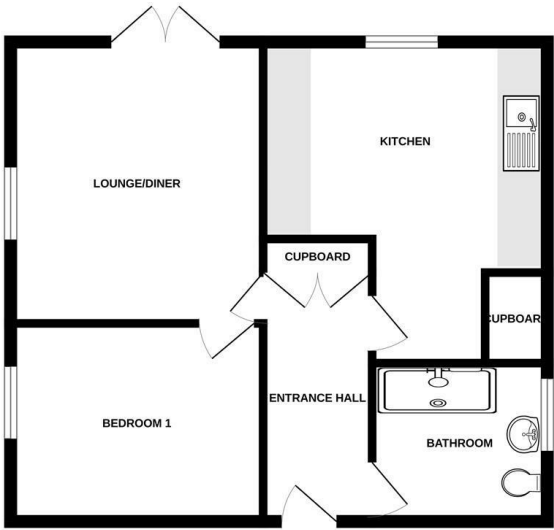
49 THE CLOISTERS CHEADLE SK8 2JP

AVAILABLE NOW - PART FURNISHED

Located on this small development on the outskirts of Cheadle is this extremely well presented ground floor apartment. Being close to local shops and with parking available this light and airy apartment also benefits from a small patio and garden area. Communal entrance hall, private entrance hall with storage, good sized lounge with door to patio area, double bedroom, modern fitted kitchen with electric cooker, fridge freezer, washing machine and dishwasher, bathroom with walk in shower. Contact Wilmslow 01625 536300 £850.00pcm COUNCIL TAX A EPC D



GROUND FLOOR



Measurements are approximate. Not to scale. Illustrative purposes only. Made with Metreapp (2025)



- GROUND FLOOR APARTMENT
- ONE DOUBLE BEDROOM
- SMALL PATIO AREA
- MODERN KITCHEN AND BATHROOM
- COUNCIL TAX A
- EPC D

