



jordan fishwick

Apt 1, 197 Westbourne House, Withington
Guide Price £1,295 Per Calendar Month



Westbourne House Whalley Range M16 8HF

£1,295 Per Calendar Month



The Property


**** AVAILABLE NOW **** CURRENTLY FULL FOR VIEWINGS **** We are super excited to offer this Beautifully presented two Double Bedroom Ground Floor Apartment within a superb period conversion, Parking is available to the front and rear with own private courtyard which has established plants and seating area.

The property is situated in a desirable part of Whalley Range walking distance to Chorlton and close to all Transport links and amenities. This is a rare find and one not to be missed. In brief the property offers; Front communal entrance and private rear entrance entered via the private courtyard garden. Large open plan Lounge and modern fitted kitchen area, good sized internal hall offering additional storage, modern bathroom with shower over bath, large main bedroom, second bedroom is also a double. There is flexibility on furnishing which will be addressed following viewings.

***** To arrange a viewing please call 0161 393 7539 *****

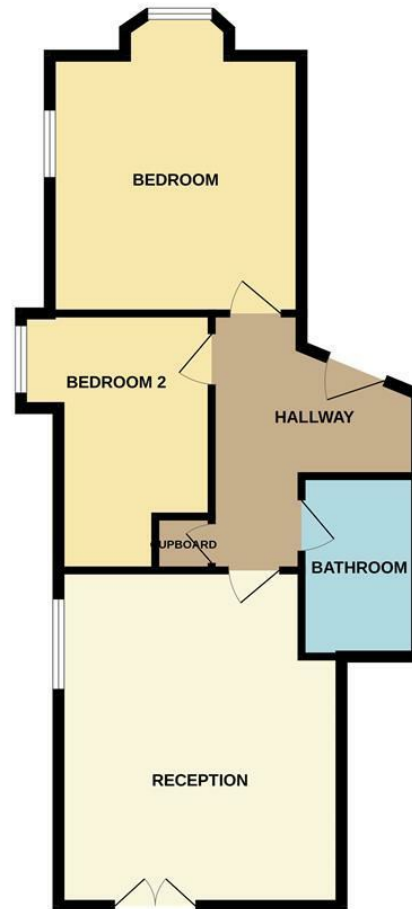
- Council Tax Band B - EPC - D
- Stunning Ground Floor 2 Double Bedroom Apartment
- Own entrance with private Courtyard
- Parking
- Part Furnished
- Close to all amenities
- Available Now



Energy Efficiency Rating		
	Current	Potential
Very energy efficient - lower running costs		
(92 plus) A		76
(81-91) B		
(69-80) C		
(55-68) D	61	
(39-54) E		
(21-38) F		
(1-20) G		
Not energy efficient - higher running costs		
England & Wales		EU Directive 2002/91/EC 



GROUND FLOOR



Whilst every attempt has been made to ensure the accuracy of the floorplan contained here, measurements of doors, windows, rooms and any other items are approximate and no responsibility is taken for any error, omission or mis-statement. This plan is for illustrative purposes only and should be used as such by any prospective purchaser. The services, systems and appliances shown have not been tested and no guarantee as to their operability or efficiency can be given.
Made with Metropix ©2024



These particulars are believed to be accurate but they are not guaranteed and do not form a contract. Neither Jordan Fishwick nor the vendor or lessor accept any responsibility in respect of these particulars, which are not intended to be statements or representations of fact and any intending purchaser or lessee must satisfy himself by inspection or otherwise as to the correctness of each of the statements contained in these particulars. Any floorplans on this brochure are for illustrative purposes only and are not necessarily to scale.

Offices at: Chorlton, Didsbury, Disley, Hale, Glossop, Macclesfield, Manchester Deansgate, Manchester Whitworth Street, New Mills, Sale, Wilmslow and Withington