



*jordan fishwick*

**WEST DIDSBURY**  
Lawnside Mews





## Lawnside Mews, West Didsbury, M20 3YD

£425,000



### The Property

An attractive 4-bed property that is 1 of 16 townhouses, built around a well maintained courtyard, within a short walk of bus and tram links into the city centre. The property benefits from allocated owner parking and a number of visitor spaces, set within a secure gated development. In outline:- Covered porch, entrance hall, downstairs WC, lounge and breakfast kitchen on the ground floor and conservatory at the rear, with the first floor providing a main bedroom with en-suite shower room and further bedroom and the second floor giving way to the two remaining bedrooms and family bathroom. Externally, there is an enclosed rear garden and block paved parking to the front. In addition, there is uPVC double glazing and gas fired central heating. \*No onward chain\*

### Directions

M20 3YD





- Appealing townhouse in gated development
- Living space over three floors
- Four double bedrooms
- Bathroom & en-suite
- Living room & breakfast kitchen
- 2 Bathrooms & downstairs WC
- Enclosed garden & gated parking
- uPVC double glazing
- Gas central heating
- Ideal location in West Didsbury

Postcode - M20 3YD

EPC Rating - C

Floor Area - 1089.00 sq ft

Local Authority - Manchester City Council

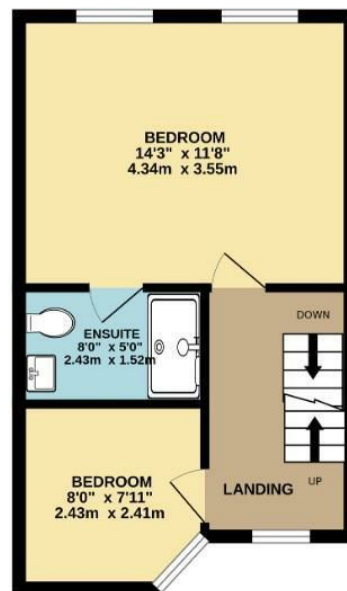
Council Tax - E



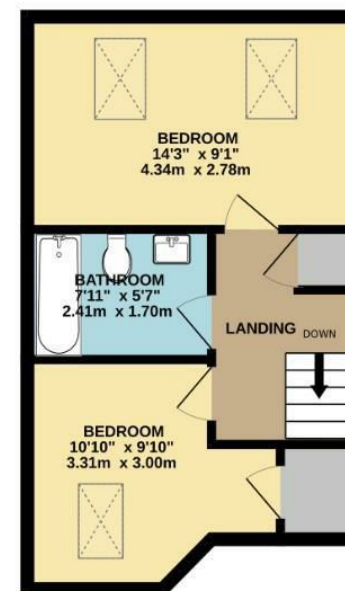
GROUND FLOOR  
423 sq.ft. (39.3 sq.m.) approx.



1ST FLOOR  
333 sq.ft. (31.0 sq.m.) approx.



2ND FLOOR  
334 sq.ft. (31.0 sq.m.) approx.



TOTAL FLOOR AREA : 1089 sq.ft. (101.2 sq.m.) approx.  
Measurements are approximate. Not to scale. Illustrative purposes only  
Made with Metropix ©2025



These particulars are believed to be accurate but they are not guaranteed and do not form a contract. Neither Jordan Fishwick nor the vendor or lessor accept any responsibility in respect of these particulars, which are not intended to be statements or representations of fact and any intending purchaser or lessee must satisfy himself by inspection or otherwise as to the correctness of each of the statements contained in these particulars. Any floorplans on this brochure are for illustrative purposes only and are not necessarily to scale.

Offices also at: Wilmslow, Macclesfield, Hale, Sale, Chorlton, Glossop, Manchester & Salford

757-759 Wilmslow Road, Didsbury Village, Manchester

0161 445 4480

didsbury@jordanfishwick.co.uk  
www.jordanfishwick.co.uk