



FOR  
SALE

*jordan fishwick*

DIDSBURY  
0161-445 4430  
[www.jordanfishwick.co.uk](http://www.jordanfishwick.co.uk)

*jordan fishwick*

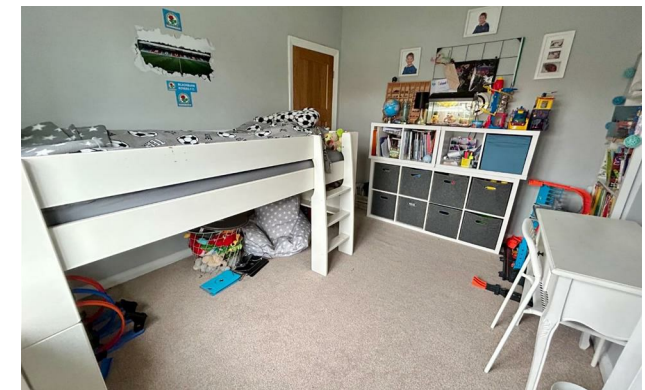
DIDSBURY  
Brayton Avenue





# Brayton Avenue, Didsbury, M20 5LP

Guide Price £575,000

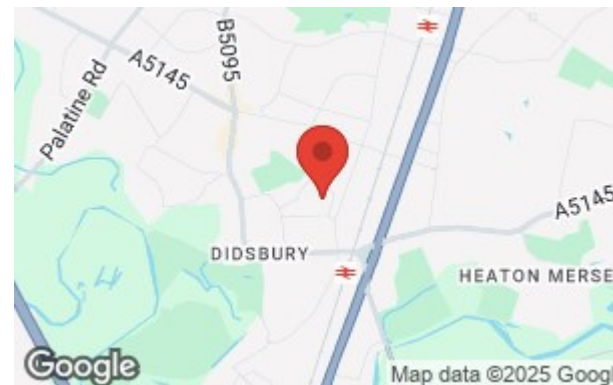


## The Property

A TRADITIONAL, BAY FRONTED, SEMI DETACHED PROPERTY LOCATED ON A POPULAR RESIDENTIAL ROAD WHICH IS WITHIN A 'SHORT STROLL' OF THE VILLAGE AND DISBURY PARK. The stylish living space incorporates a lovely open plan living area with a log burner, dining & kitchen area with central island, solid wooden works tops, exposed brick chimney breast and bifold doors giving access to the rear garden, with three good sized bedrooms, bathroom and separate WC on the first floor. Externally, the property is set behind a lawned garden and adjoining paved driveway for several cars, in turn leading to a detached garage and the rear garden, being laid mainly to lawn.

## Directions

M20 5LP





- Traditional semi detached
- Stylish living space
- Open plan living, dining & kitchen area
- Comprehensively fitted kitchen
- Three good sized bedrooms
- Bathroom & separate WC
- Gas central heating
- uPVC double glazing
- Ideal location close to Didsbury Village & Park

Postcode - M20 5LP

EPC Rating - D

Floor Area - 1000.00 sq ft

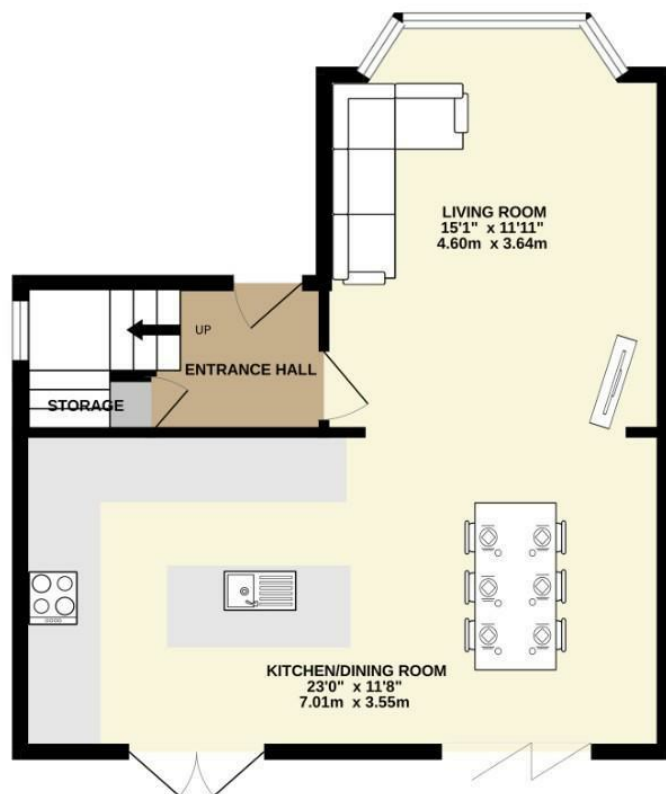
Local Authority - Manchester City Council

Council Tax - D

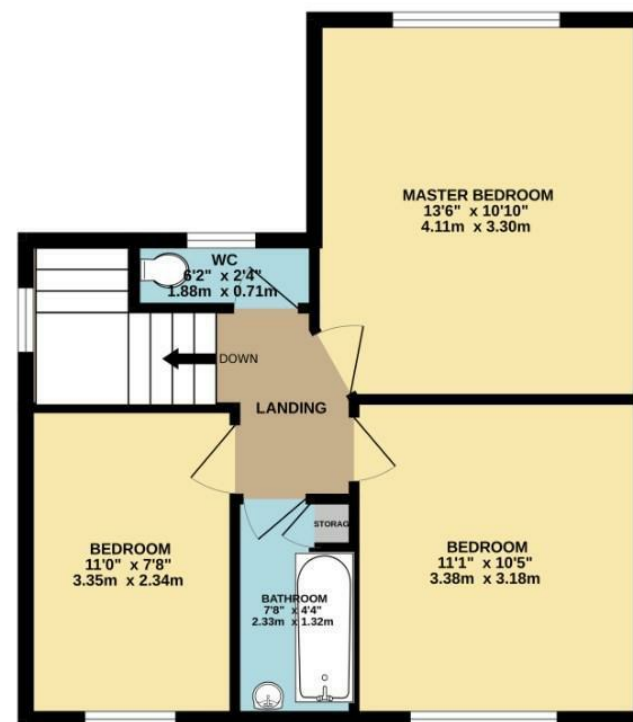




GROUND FLOOR  
512 sq.ft. (47.6 sq.m.) approx.



1ST FLOOR  
488 sq.ft. (45.4 sq.m.) approx.



TOTAL FLOOR AREA : 1000 sq.ft. (92.9 sq.m.) approx.  
Measurements are approximate. Not to scale. Illustrative purposes only  
Made with Metropix ©2025



These particulars are believed to be accurate but they are not guaranteed and do not form a contract. Neither Jordan Fishwick nor the vendor or lessor accept any responsibility in respect of these particulars, which are not intended to be statements or representations of fact and any intending purchaser or lessee must satisfy himself by inspection or otherwise as to the correctness of each of the statements contained in these particulars. Any floorplans on this brochure are for illustrative purposes only and are not necessarily to scale.

Offices also at: Wilmslow, Macclesfield, Hale, Sale, Chorlton, Glossop, Manchester & Salford

757-759 Wilmslow Road, Didsbury Village, Manchester

0161 445 4480

didsbury@jordanfishwick.co.uk  
www.jordanfishwick.co.uk