



*jordan* fishwick

**DIDSBURY**  
Milden Close





# Milden Close, Didsbury, M20 6EP

Guide Price £166,500

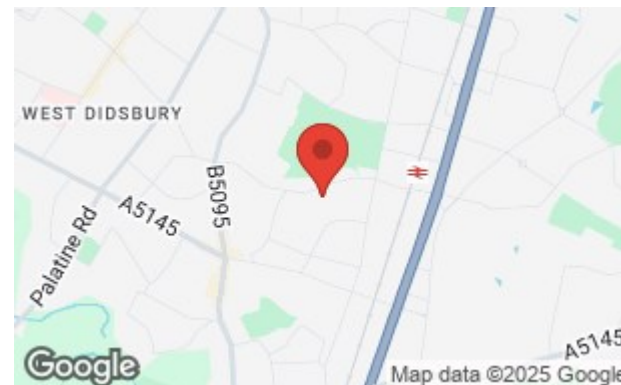


## The Property

AN APPEALING GROUND FLOOR APARTMENT FORMING PART OF A SMALL PURPOSE BUILT DEVELOPMENT, LOCATED AT THE END OF A QUIET CLOSE WITHIN EASY REACH OF DIDSURY VILLAGE. This property is likely to appeal to a range of purchasers and forms part of a small development known as 'Austin Court', being one of only a few apartments in the building and enjoying a quiet cul-de-sac location which is within easy reach of Didsbury Village. The property comprises: Communal entrance hall, private entrance hall giving way to a bright and airy living room opening to the fitted kitchen with a range of units, double bedroom with built-in wardrobes and a shower room with white suite and heated towel rail . The property benefits from double glazing throughout and electric heating with WIFI controlled thermostat. Externally, the development lies within well tended gardens with ample residents parking.  
\*NO ONWARD CHAIN\*

## Directions

### M20 6EP





- A ground floor one bed apartment
- Enjoying a quiet cul-de-sac location
- Electric heating & double glazing
- Off road parking
- Well kept communal lawned gardens
- Short walk to Fog Lane park
- Council Tax Band - A / EPC Rating - F
- No onward chain

Postcode - M20 6EP

EPC Rating - F

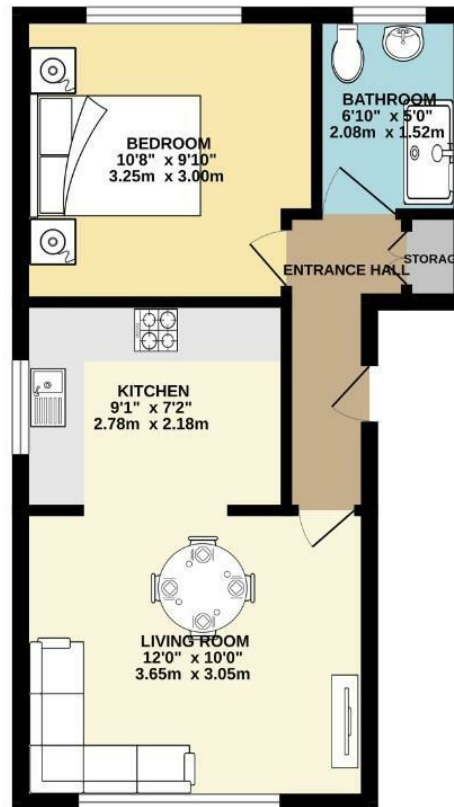
Floor Area - 355.00 sq ft

Local Authority - Manchester City Council

Council Tax - A



GROUND FLOOR  
355 sq.ft. (32.9 sq.m.) approx.



TOTAL FLOOR AREA: 355 sq.ft. (32.9 sq.m.) approx.  
Measurements are approximate. Not to scale. Illustrative purposes only.  
Made with Metropix ©2025



These particulars are believed to be accurate but they are not guaranteed and do not form a contract. Neither Jordan Fishwick nor the vendor or lessor accept any responsibility in respect of these particulars, which are not intended to be statements or representations of fact and any intending purchaser or lessee must satisfy himself by inspection or otherwise as to the correctness of each of the statements contained in these particulars. Any floorplans on this brochure are for illustrative purposes only and are not necessarily to scale.

Offices also at: Wilmslow, Macclesfield, Hale, Sale, Chorlton, Glossop, Manchester & Salford

757-759 Wilmslow Road, Didsbury Village, Manchester

0161 445 4480

didsbury@jordanfishwick.co.uk  
www.jordanfishwick.co.uk