



jordan fishwick

WEST DIDSBURY
Georgia Avenue



Georgia Avenue, West Didsbury, M20 1LY

Offers Over £400,000



The Property

**** SEE VIDEO TOUR **** - A fantastic modern home with beautifully presented living space which extends over 950 sq ft and a great location in West Didsbury, close to the Metrolink and Burton Road with its array of cafés, restaurants, & independent shops. Numerous other noteworthy features include a landscaped rear garden, allocated parking, two extremely generous double bedrooms with fitted furniture to the main, spacious bathroom and downstairs WC, lovely living room with French doors opening to the rear garden and open staircase to the first floor, separate dining area and a comprehensively fitted kitchen. In addition, the property benefits from uPVC double glazing and gas central heating.

Directions

M20 1LY



- Superb modern home over 950 sq ft
- Two generous double bedrooms
- Spacious bathroom and downstairs WC
- Lovely living room with open staircase
- Separate dining area
- Comprehensively fitted kitchen
- Landscaped rear garden
- Allocated parking
- uPVC dbl glazing & GCH
- Ideal West Didsbury location

Postcode - M20 1LY

EPC Rating - C

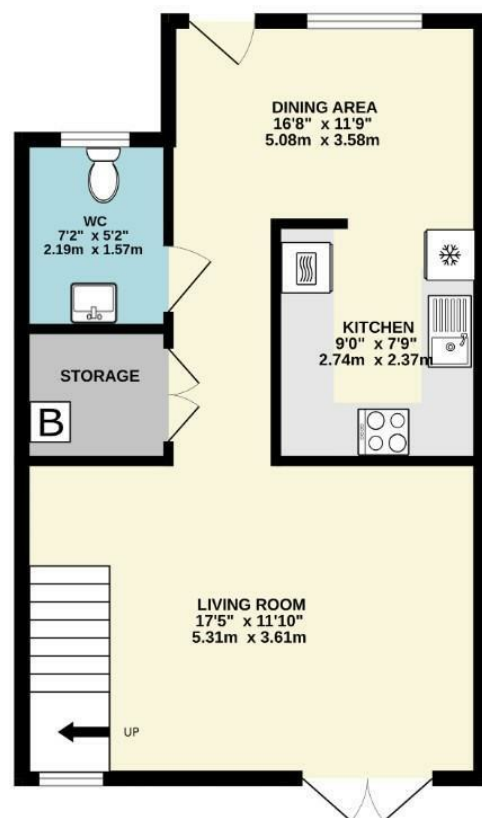
Floor Area - 951.00 sq ft

Local Authority - Manchester City Council

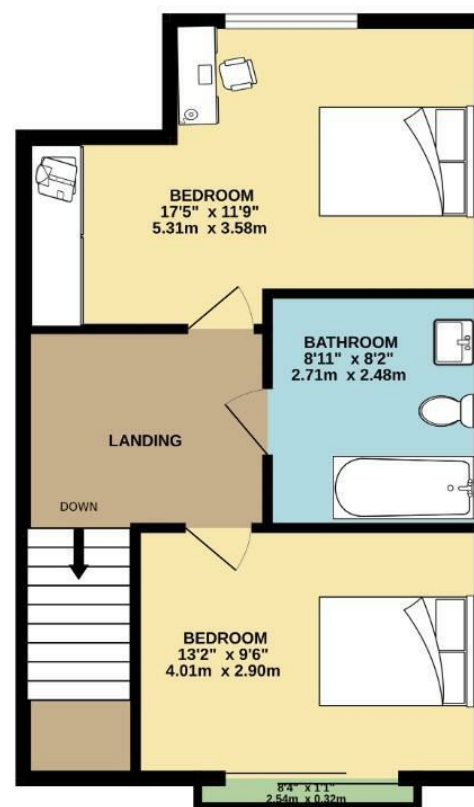
Council Tax - D



GROUND FLOOR
475 sq.ft. (44.1 sq.m.) approx.



1ST FLOOR
476 sq.ft. (44.2 sq.m.) approx.



TOTAL FLOOR AREA: 951 sq.ft. (88.3 sq.m.) approx.
Measurements are approximate. Not to scale. Illustrative purposes only
Made with Metropix ©2024



These particulars are believed to be accurate but they are not guaranteed and do not form a contract. Neither Jordan Fishwick nor the vendor or lessor accept any responsibility in respect of these particulars, which are not intended to be statements or representations of fact and any intending purchaser or lessee must satisfy himself by inspection or otherwise as to the correctness of each of the statements contained in these particulars. Any floorplans on this brochure are for illustrative purposes only and are not necessarily to scale.

Offices also at: Wilmslow, Macclesfield, Hale, Sale, Chorlton, Glossop, Manchester & Salford

757-759 Wilmslow Road, Didsbury Village, Manchester

0161 445 4480

didsbury@jordanfishwick.co.uk
www.jordanfishwick.co.uk