



*jordanfishwick*

14 Wilbraham Road, M14 6DL  
£1,225 Per Calendar Month





## Wilbraham Road Fallowfield M14 6DL

£1,225 Per Calendar Month



### The Property


\*\*\* AVAILABLE MARCH \*\*\* A spacious two-bedroom, two-bathroom apartment located in a modern, private block in an excellent location. Within walking distance of Sainsburys Fallowfield, Platt Fields Park and great transport links it is ideal for a single occupant, couples or professional sharers. This property offers spacious and comfortable living with two double bedrooms, one with ensuite, main bathroom and a generously sized kitchen / living area which includes an electric oven & hob, washing machine and a large fridge freezer. The Property is offered on a furnished basis and is fully double glazed with electric radiators. To view contact Didsbury.

EPC Rating C // Council Tax Band C

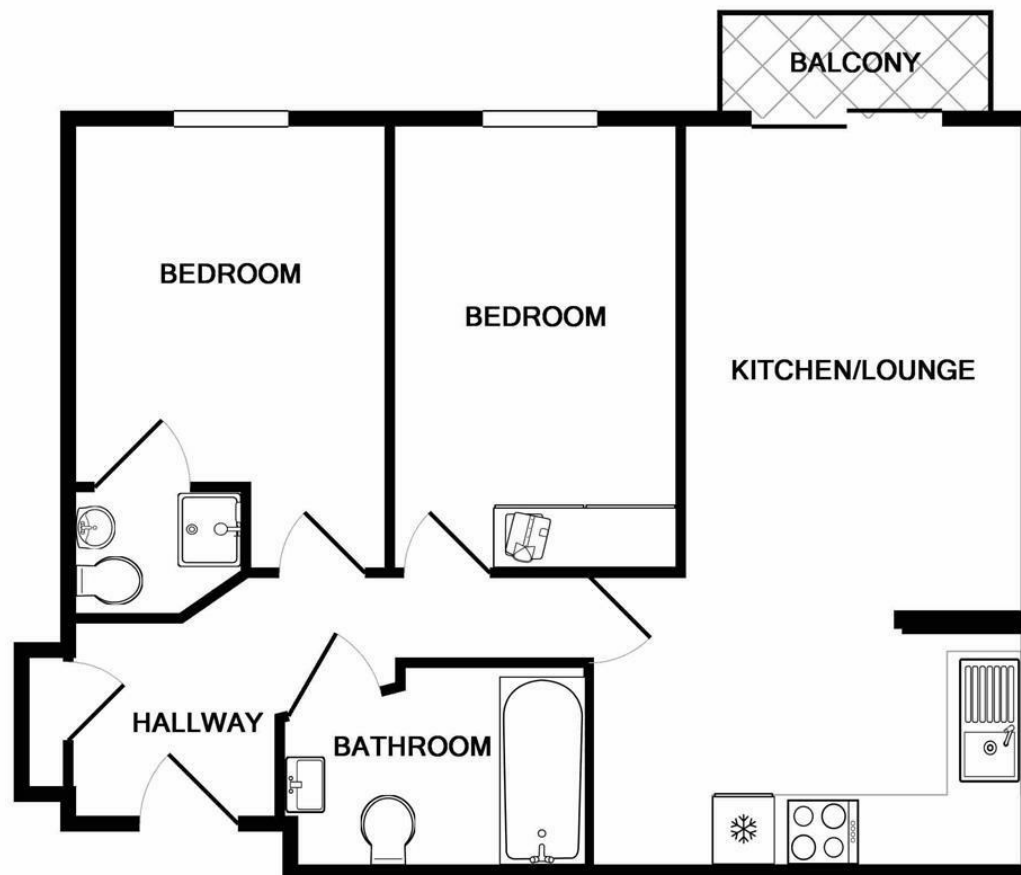


- Available March
- Two Double Bedrooms
- Two Bathrooms
- Furnished
- Ideal for Couples or Sharers
- Great Location of Withington
- Close to all Local Amenities
- Gated Parking
- Council Tax Band C
- EPC Rating C



Energy Efficiency Rating		
	Current	Potential
Very energy efficient - lower running costs		
(92 plus) <b>A</b>		<b>83</b>
(81-91) <b>B</b>		
(69-80) <b>C</b>	<b>71</b>	
(55-68) <b>D</b>		
(39-54) <b>E</b>		
(21-38) <b>F</b>		
(1-20) <b>G</b>		
Not energy efficient - higher running costs		
<b>England &amp; Wales</b>		EU Directive 2002/91/EC 





#### FLAT 12 DAWN COURT

Whilst every attempt has been made to ensure the accuracy of the floor plan contained here, measurements of doors, windows, rooms and any other items are approximate and no responsibility is taken for any error, omission, or mis-statement. This plan is for illustrative purposes only and should be used as such by any prospective purchaser. The services, systems and appliances shown have not been tested and no guarantee as to their operability or efficiency can be given

Made with Metropix ©2017



These particulars are believed to be accurate but they are not guaranteed and do not form a contract. Neither Jordan Fishwick nor the vendor or lessor accept any responsibility in respect of these particulars, which are not intended to be statements or representations of fact and any intending purchaser or lessee must satisfy himself by inspection or otherwise as to the correctness of each of the statements contained in these particulars. Any floorplans on this brochure are for illustrative purposes only and are not necessarily to scale.

Offices at: Offices at Chorlton, Didsbury, Disley, Hale, Glossop, Macclesfield, Manchester Deansgate, Manchester Whitworth Street, New Mills, Sale, Wilmslow and Withington