



*jordanfishwick*

6 Old Moat Lane, M20 3GF  
£980 Per Calendar Month





### The Property

\*\*\* AVAILABLE FEBRUARY \*\*\* A one bedroom ground floor apartment available on a furnished basis that is situated within walking distance to the heart of Withington village. Close by to local shops and transport links makes it ideal for a single occupant or couple only. In further detail, the property comprises; hallway with plenty of storage cupboards, one double bedroom, bathroom with a shower over bath and open plan living/kitchen area with all white goods included. Furnished. Gated, unallocated on-site parking subject to availability. On street parking available without the need for a permit from the council, at the time of writing. To arrange a viewing please contact 0161 4382411

View our Virtual Tour Here - <https://www.youtube.com/watch?v=CAdHeGaUgYQ>

EPC Rating C / Council Tax Band A

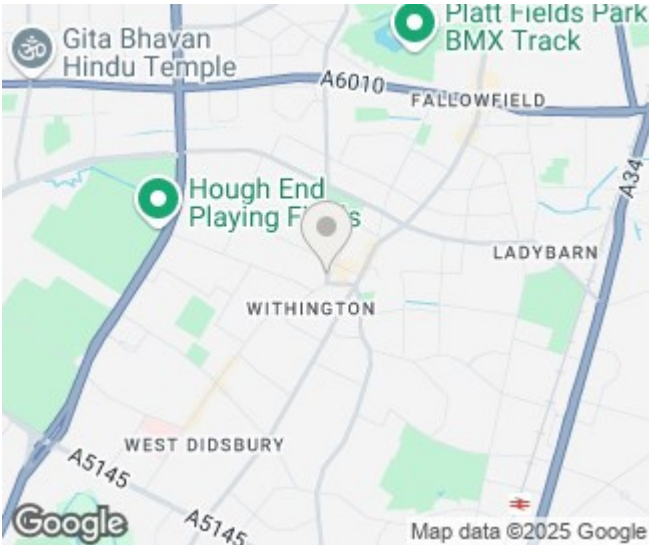
## Old Moat Lane Withington M20 3GF

£980 Per Calendar Month



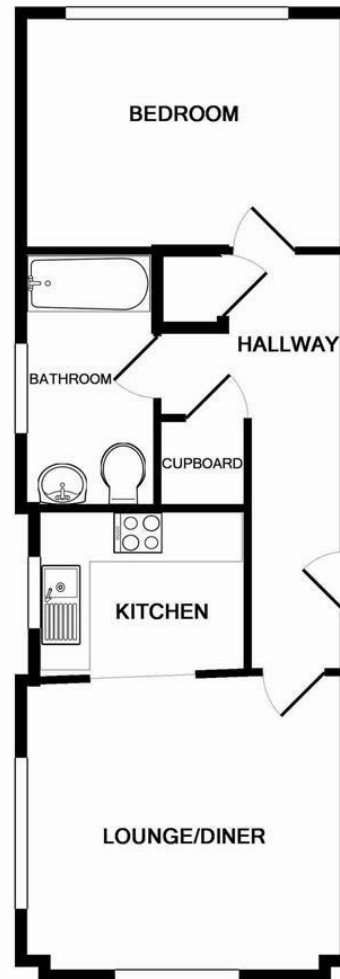


- Available February
- One Double Bedroom
- Ground Floor Apartment
- Furnished
- Ideal for Single Occupant or Couple
- Walkable to all Local Amenities
- Great Location of Withington
- Parking Subject to Availability
- Council Tax Band A
- EPC Rating C



Energy Efficiency Rating		
	Current	Potential
Very energy efficient - lower running costs		
(92 plus) A		
(81-91) B		
(69-80) C	75	76
(55-68) D		
(39-54) E		
(21-38) F		
(1-20) G		
Not energy efficient - higher running costs		
England & Wales		EU Directive 2002/91/EC





Whilst every attempt has been made to ensure the accuracy of the floor plan contained here, measurements of doors, windows, rooms and any other items are approximate and no responsibility is taken for any error, omission, or mis-statement. This plan is for illustrative purposes only and should be used as such by any prospective purchaser. The services, systems and appliances shown have not been tested and no guarantee as to their operability or efficiency can be given.  
Made with Metropix ©2016



These particulars are believed to be accurate but they are not guaranteed and do not form a contract. Neither Jordan Fishwick nor the vendor or lessor accept any responsibility in respect of these particulars, which are not intended to be statements or representations of fact and any intending purchaser or lessee must satisfy himself by inspection or otherwise as to the correctness of each of the statements contained in these particulars. Any floorplans on this brochure are for illustrative purposes only and are not necessarily to scale.

Offices at: Offices at Chorlton, Didsbury, Disley, Hale, Glossop, Macclesfield, Manchester Deansgate, Manchester Whitworth Street, New Mills, Sale, Wilmslow and Withington