

LET AND
MANAGED BY

*jordanfishwick
lettings*

WITHINGTON

0161-438 2411

jordanfishwick

398-400 Wilmslow Road, Withington, M20

£1,200 Per Calendar Month



The Property

View our Virtual Tour Here - <https://youtu.be/8oQIW7KecBA>

*** AVAILABLE NOW *** A stylish and beautifully presented top floor apartment located off Wilmslow Road. The property is located in close proximity to local bars, shops and bus routes into the City Centre. The accommodation will prove ideal for a couple or small family. In brief the property comprises; entrance hall, open plan living/kitchen with integrated appliances, bedroom with fitted cupboards and en-suite shower room, second double bedroom with fitted wardrobe and a bathroom with a three piece white suite. The property also offers a private off road, allocated parking for one car. Unfurnished to inc white goods only. Please call our Withington office on 0161 438 2411 to organise a viewing.

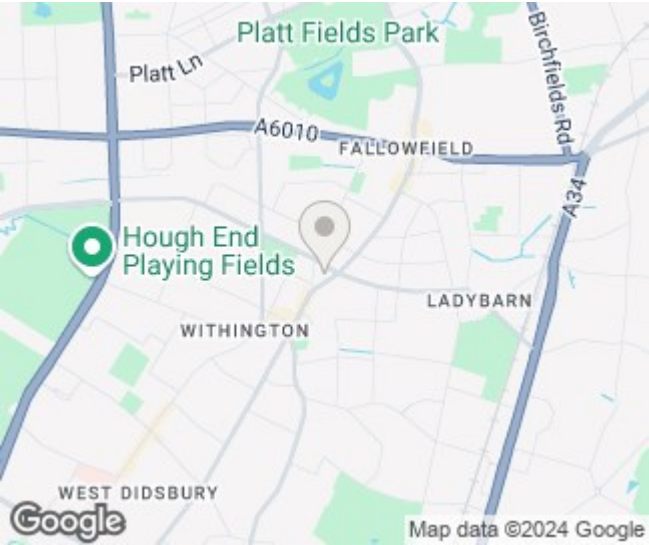
EPC Rating - C


**Wilmslow Road Manchester
M20 3LU**

£1,200 Per Calendar Month



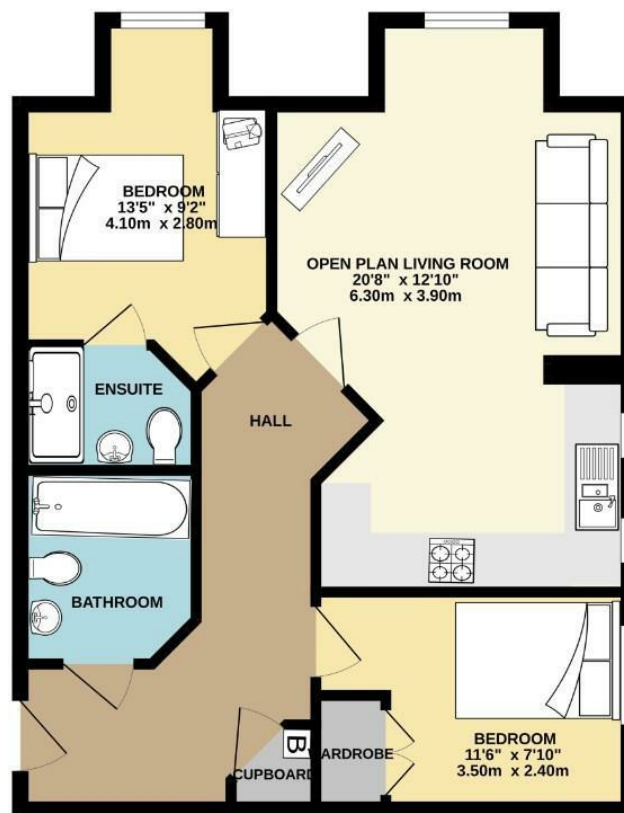
- Available Now
- Two Bedrooms
- Two Bathrooms
- Top Floor Apartment
- Unfurnished
- Ideal for Couple or Small Families
- Excellent Transport Links
- Off Road Allocated Parking
- Council Tax Band B
- EPC Rating C



Energy Efficiency Rating		
	Current	Potential
Very energy efficient - lower running costs		
(92 plus) A		
(81-91) B	79	79
(69-80) C		
(55-68) D		
(39-54) E		
(21-38) F		
(1-20) G		
Not energy efficient - higher running costs		
England & Wales	EU Directive 2002/91/EC 	



TOP FLOOR
574 sq.ft. (53.3 sq.m.) approx.



TOTAL FLOOR AREA : 574 sq.ft. (53.3 sq.m.) approx.
Measurements are approximate. Not to scale. Illustrative purposes only.
Made with Metapix ©2024



These particulars are believed to be accurate but they are not guaranteed and do not form a contract. Neither Jordan Fishwick nor the vendor or lessor accept any responsibility in respect of these particulars, which are not intended to be statements or representations of fact and any intending purchaser or lessee must satisfy himself by inspection or otherwise as to the correctness of each of the statements contained in these particulars. Any floorplans on this brochure are for illustrative purposes only and are not necessarily to scale.

Offices at: Offices at Chorlton, Didsbury, Disley, Hale, Glossop, Macclesfield, Manchester Deansgate, Manchester Whitworth Street, New Mills, Sale, Wilmslow and Withington