



*jordanfishwick*

512 Wilmslow Road, M20 4BT  
£875 Per Calendar Month



## Wilmslow Road Withington M20 4BT

£875 Per Calendar Month



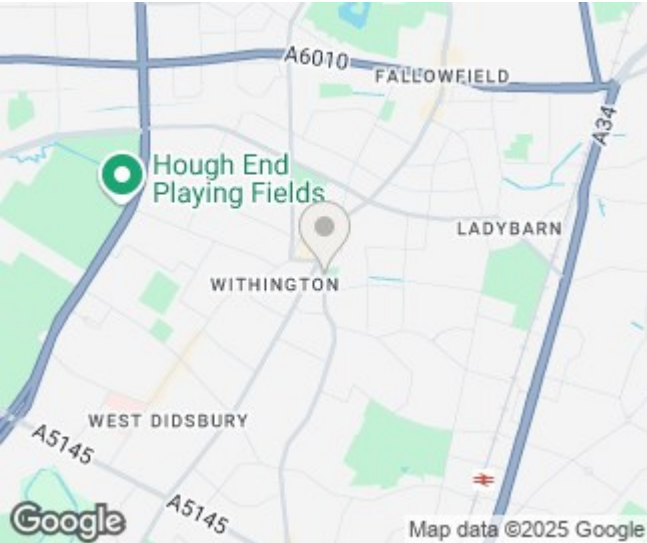
### The Property

View our Virtual Tour Here - <https://youtu.be/4FTG6B07CRI>

\*\*\* AVAILABLE NOW \*\*\* An appealing ground floor apartment, forming part of an attractive period conversion with a convenient location which is within a 'short stroll' of Withington Village. Ideal for a single occupant or couple only. Tastefully presented and benefiting from gas central heating and majority double glazing. The living space in outline comprises:- Communal entrance hall, private entrance hall, living room with walk-in bay window and high ceilings, fully fitted kitchen including all appliances, good sized double bedroom with new carpet, bed and mattress along with ample space in the built-in wardrobe and a contemporary shower room with chrome fittings. Offered on a furnished basis. Parking to the rear on a first come first serve basis - not allocated.

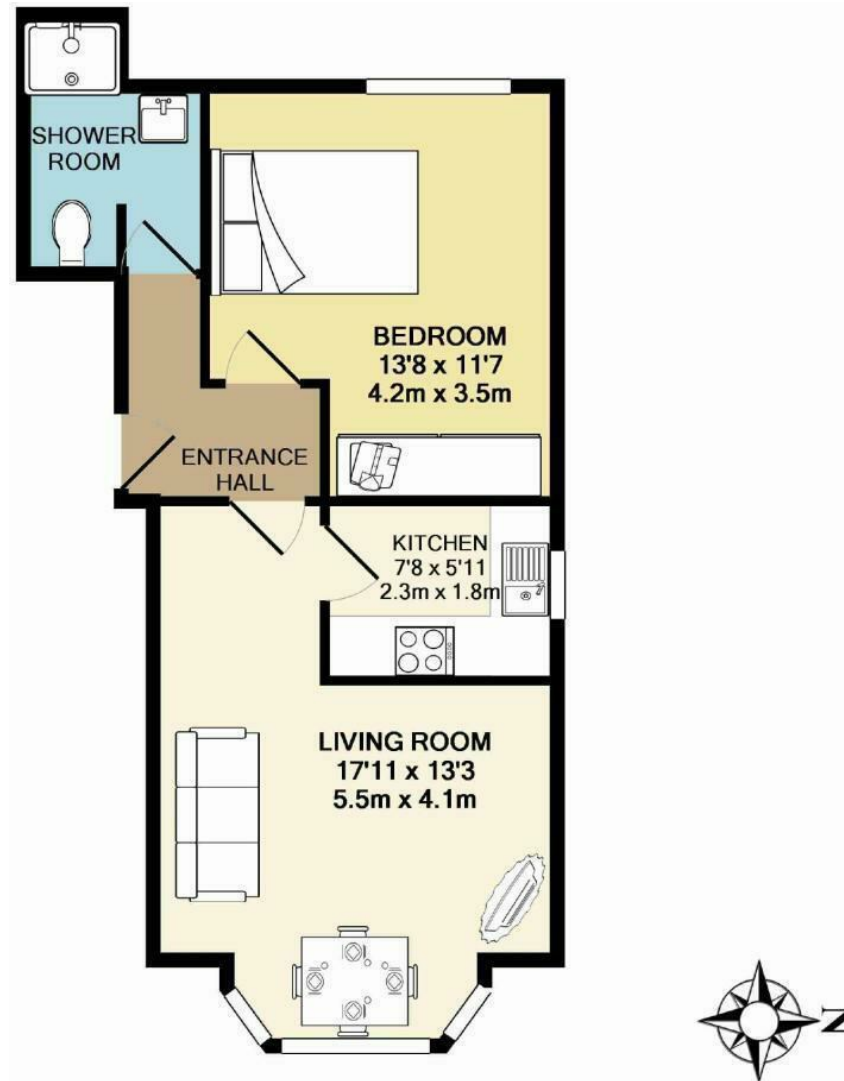
EPC Rating - C

- Available Now
- One Double Bedroom
- Ground Floor Apartment
- Modern Design Throughout
- Ideal for Single Occupant or Couple Only
- Fully Furnished
- Attractive Period Conversion
- Close to all Local Amenities
- Council Tax Band A
- EPC Rating C



Energy Efficiency Rating		
	Current	Potential
Very energy efficient - lower running costs		
(92 plus) <b>A</b>		
(81-91) <b>B</b>		
(69-80) <b>C</b>	71	78
(55-68) <b>D</b>		
(39-54) <b>E</b>		
(21-38) <b>F</b>		
(1-20) <b>G</b>		
Not energy efficient - higher running costs		
<b>England &amp; Wales</b>	EU Directive 2002/91/EC	





TOTAL APPROX. FLOOR AREA 445 SQ.FT. (41.3 SQ.M.)  
 Measurements are approximate. Not to scale. Illustrative purposes only  
 Made with Metropix ©2015



These particulars are believed to be accurate but they are not guaranteed and do not form a contract. Neither Jordan Fishwick nor the vendor or lessor accept any responsibility in respect of these particulars, which are not intended to be statements or representations of fact and any intending purchaser or lessee must satisfy himself by inspection or otherwise as to the correctness of each of the statements contained in these particulars. Any floorplans on this brochure are for illustrative purposes only and are not necessarily to scale.

Offices at: Offices at Chorlton, Didsbury, Disley, Hale, Glossop, Macclesfield, Manchester Deansgate, Manchester Whitworth Street, New Mills, Sale, Wilmslow and Withington