



jordan fishwick

90 Darley Avenue, Chorlton, M21 7GG

Guide Price £370,000



**90 Darley Avenue, Chorlton,
Manchester, M21 7GG**

Auction Guide £370,000




The Property

A delightful TWO DOUBLE BEDROOM DETACHED PROPERTY situated on a superb, larger than average corner plot positioned mid way between Chorlton and Didsbury Village Centres. This wonderful property provides spacious and light accommodation throughout and further benefits from both a GATED DRIVEWAY as well as huge scope for extension (STPP). The accommodation briefly comprises: covered porch, entrance hallway, spacious lounge with large bay window and French patio doors opening to the substantial garden, kitchen fitted with GRANITE WORKTOPS, main bedroom with large bay window, second double bedroom and bathroom, fitted with a modern three piece suite with over bath shower. The loft space is accessed via a pull down ladder and has been fully boarded with Velux window and offers scope for further development should this be required. Double glazing and gas central heating have been installed throughout. Externally, there are gardens surrounding the property to all sides which are mainly laid to lawn with paved patio area. An internal viewing of this fine property is most highly recommended. Please note, no outline or planning permission has been sought by the owner. This property is for sale by MODERN METHOD OF AUCTION Council Tax Band C. EPC E.

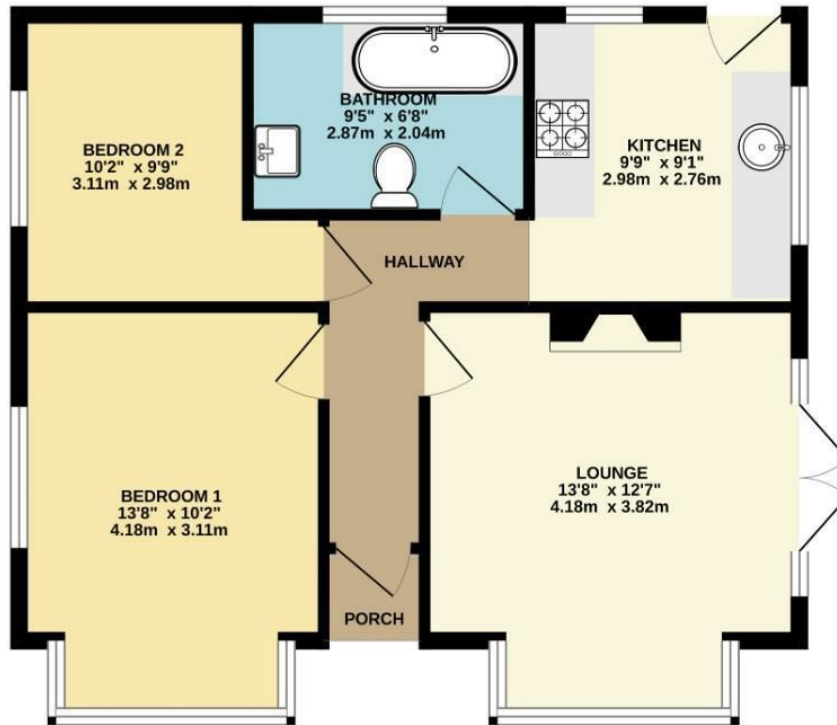
- Two double bedroom DETACHED property
- Short walk from local amenities, transport links and Chorlton Water Park
- Substantial plot - approx. 102ft X 52ft
- Gated driveway providing secure off road parking
- Double glazing and gas central heating throughout
- Council Tax Band C. EPC E.



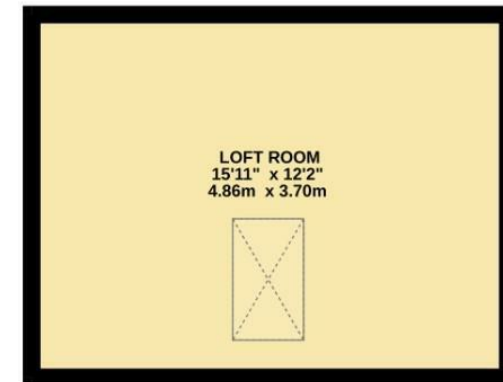
Energy Efficiency Rating		
	Current	Potential
Very energy efficient - lower running costs		
(92 plus) A		
(81-91) B		83
(69-80) C		
(55-68) D		
(39-54) E	43	
(21-38) F		
(1-20) G		
Not energy efficient - higher running costs		
England & Wales		EU Directive 2002/91/EC 



GROUND FLOOR
586 sq.ft. (54.4 sq.m.) approx.



1ST FLOOR
194 sq.ft. (18.0 sq.m.) approx.



TOTAL FLOOR AREA: 780 sq.ft. (72.4 sq.m.) approx.

Whilst every attempt has been made to ensure the accuracy of the floorplan contained here, measurements of doors, windows, rooms and any other items are approximate and no responsibility is taken for any error, omission or mis-statement. This plan is for illustrative purposes only and should be used as such by any prospective purchaser. The services, systems and appliances shown have not been tested and no guarantee as to their operability or efficiency can be given.
Made with Metropix ©2024



These particulars are believed to be accurate but they are not guaranteed and do not form a contract. Neither Jordan Fishwick nor the vendor or lessor accept any responsibility in respect of these particulars, which are not intended to be statements or representations of fact and any intending purchaser or lessee must satisfy himself by inspection or otherwise as to the correctness of each of the statements contained in these particulars. Any floorplans on this brochure are for illustrative purposes only and are not necessarily to scale.

Offices at: Chorlton, Didsbury, Disley, Hale, Glossop, Macclesfield, Manchester Deansgate, Manchester Whitworth Street, New Mills, Sale, Wilmslow and Withington