

Wild & Co.

wildandco.uk



Riverside Close, E5 9SR

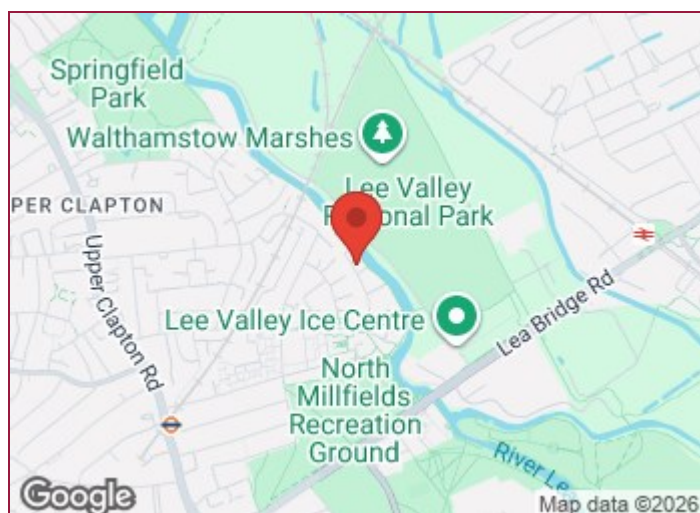
Two-Bedroom Purpose-Built Flat - Available Now. A well-presented two-bedroom purpose-built flat located adjacent to the River Lea and situated just off Harry Zeital Way. The property is within easy walking distance of Clapton Station, offering direct services to Liverpool Street. The accommodation benefits from: Fitted kitchen, Spacious separate lounge, Bathroom with WC, Newly fitted carpets throughout, Freshly redecorated interior, Allocated parking. Ideally located for local amenities and transport links, this property is available immediately. Early viewing is highly recommended to avoid disappointment.

£2,400 Per Month |

Riverside Close, E5 9SR



- 2 Bedroom purpose built flat,
- Walking distance of Clapton Station (direct link to Liverpool Street)
- Bathroom/WC
- Parking
- Next to the River Lea
- Fitted kitchen
- Newly fitted carpets
- Off Harry Zeital Way
- Separate lounge
- Redecorated



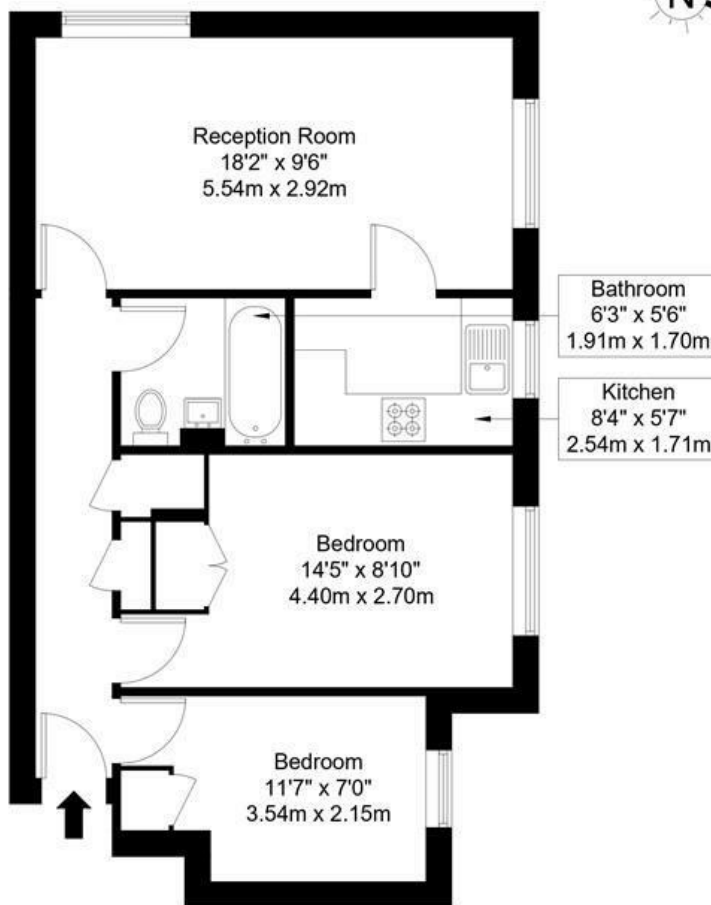
Directions

Off Harry Zeital Way



Riverside Close, E5 9SR

Approx Gross Internal Area = 50.1 sq m / 539 sq ft



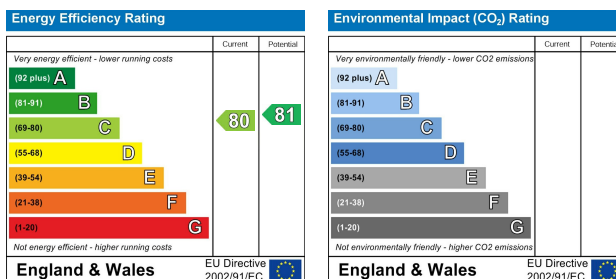
First Floor

Ref :

Copyright **BLEU PLAN**

The Floor plan is not to scale and measurements and areas shown are approximate and therefore should be used for illustrative purposes only. The plan has been prepared in accordance with the RICS code of Measuring Practice and whilst we have confidence in the information produced it must not be relied on. Maximum lengths and widths are represented on the floor plan. If there is any aspect of particular importance, you should carry out or commission your own inspection of the property.

Copyright @ BleuPlan



These particulars, whilst believed to be accurate are set out as a general outline only for guidance and do not constitute any part of an offer or contract. Intending purchasers should not rely on them as statements of representation of fact, but must satisfy themselves by inspection or otherwise as to their accuracy. No person in this firm's employment has the authority to make or give any representation or warranty in respect of the property.