

Wild & Co.

wildandco.uk



Aster Court, E5 9GB

Set within this popular development is this bright and spacious 2 double bedroom apartment. The property is moments from The River Lea, Millfields Park & Walthamstow Marshes, offering beautiful walk & cycle routes. Great transport links to include Clapton Station (City links), Lea Bridge Road Station (Stratford). Also benefiting from a secure underground car parking space. Offered unfurnished.

£2,000 Per Month |

Aster Court, E5 9GB



- 2 Double bedroom apartment
- Bathroom/WC
- Offering beautiful walk & cycle routes
- Large open plan lounge
- Within this popular development, moments from The River Lea, Millfields Park & Walthamstow Marshes
- Walking distance of Clapton Station
- Fitted kitchen
- Great transport links to include Clapton Station (City links), Lea Bridge Road Station (Stratford)
- Available from 27th March 2022

Wild & Co. are pleased to offer for rent this: fantastic 2 double bedroom apartment set within this popular development, moments from The River Lea, Millfields Park & Walthamstow Marshes, offering beautiful walk & cycle routes. Great transport links to include Clapton Station (City links), Lea Bridge Road Station (Stratford). Benefiting from: large open plan lounge to fitted kitchen, bathroom/WC.

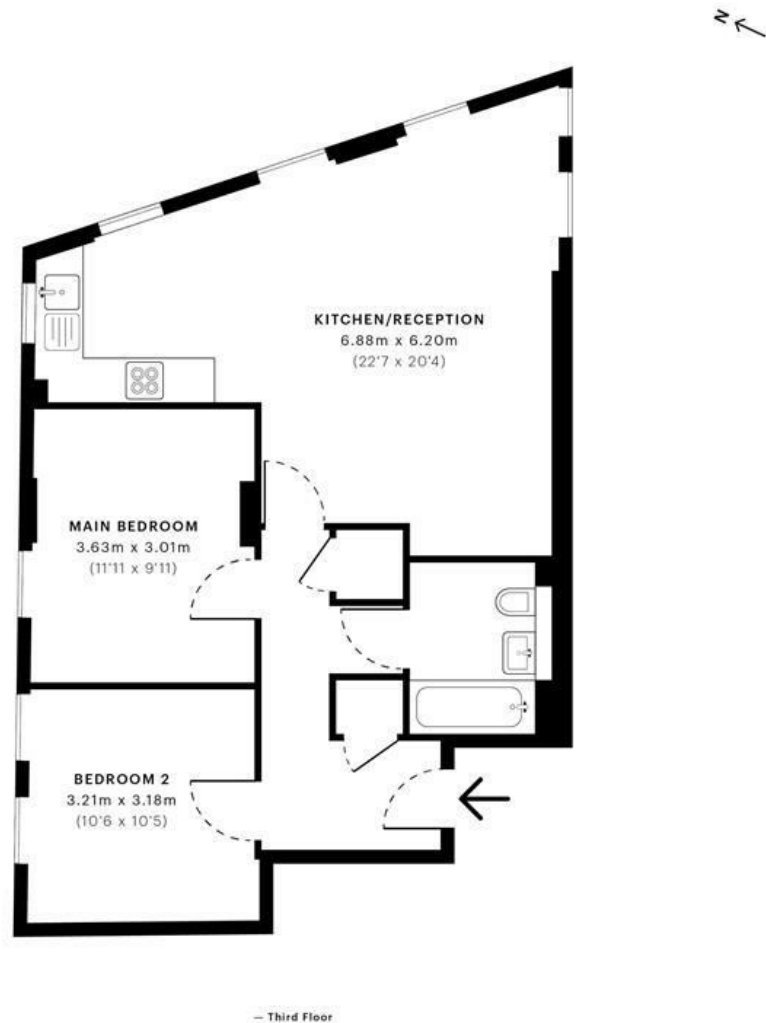
Available now - view asap.



Directions

Accessed from Mount Pleasant Hill, directly off Upper Clapton Road (A107).





GROSS INTERNAL AREA (GIA)
The footprint of the property
64.07 sqm / 689.64 sqft

NET INTERNAL AREA (NIA)
Excludes walls and external features
Includes washrooms, restricted head height
61.67 sqm / 663.81 sqft

EXTERNAL STRUCTURAL FEATURES
Balconies, terraces, verandas etc.
0.00 sqm / 0.00 sqft

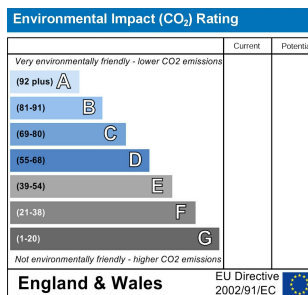
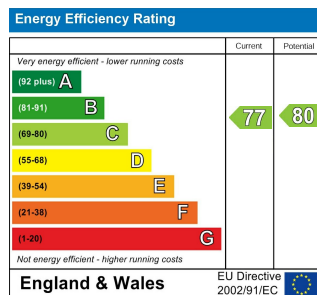
RESTRICTED HEAD HEIGHT
Limited use area under 1.5 m
0.00 sqm / 0.00 sqft



Spec Verified floor plans are produced in accordance with Royal Institution of Chartered Surveyors' Property Measurement Standards. Plots and gardens are illustrative only and excluded from all area calculations. Due to rounding, numbers may not add up precisely. All measurements shown for the individual room lengths and widths are the maximum points of measurements captured in the scan.

IPMS 3B RESIDENTIAL 64.54 sqm / 694.70 sqft
IPMS 3C RESIDENTIAL 62.51 sqm / 672.85 sqft

SPEC ID 606c290622d3fc0dcd8c9ce



These particulars, whilst believed to be accurate are set out as a general outline only for guidance and do not constitute any part of an offer or contract. Intending purchasers should not rely on them as statements of representation of fact, but must satisfy themselves by inspection or otherwise as to their accuracy. No person in this firm's employment has the authority to make or give any representation or warranty in respect of the property.