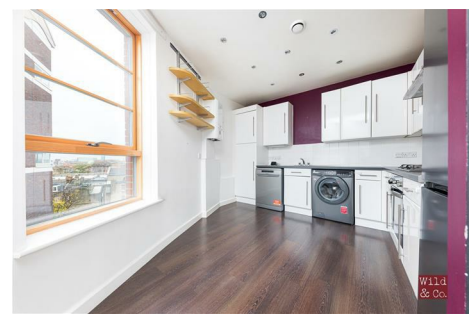


Wild & Co.

wildandco.uk



Lyme Grove House, E9 6FF

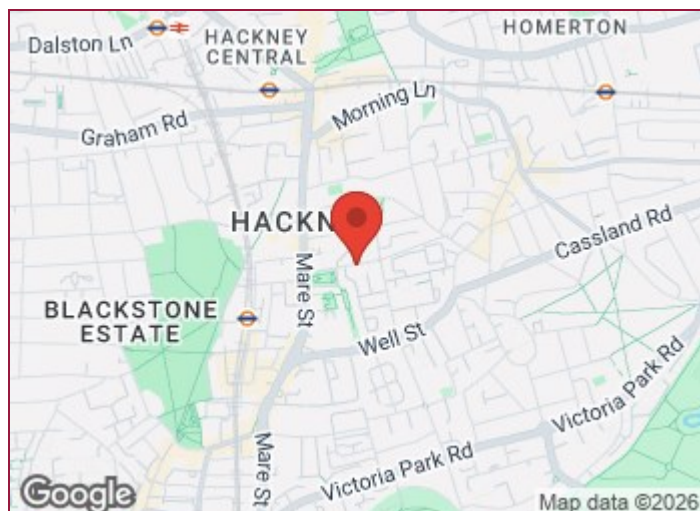
2 Double bedroom 5th floor apartment with private west facing balcony. Benefiting from fitted kitchen with new appliances, lounge, bathroom/WC, west facing balcony, lift access. Situated moments from Mare Street, walking distance London Fields Station, London Fields, and Broadway Market. Offered unfurnished. Available from 17th April 2026, which option to move in 17/4/26 to 14/5/26. VIEW ASAP.

£2,750 Per Month |

Lyme Grove House, E9 6FF



- 2 Double bedroom
- Fitted kitchen with new appliances
- Moments from Mare Street
- Available from 17th April 2026, which option to move in 17/4/26 to 14/5/26
- 5th Floor apartment
- Lounge & bathroom/WC
- Walking distance London Fields Station, London Fields & Broadway Market.
- Private west facing balcony
- Lift access
- Unfurnished



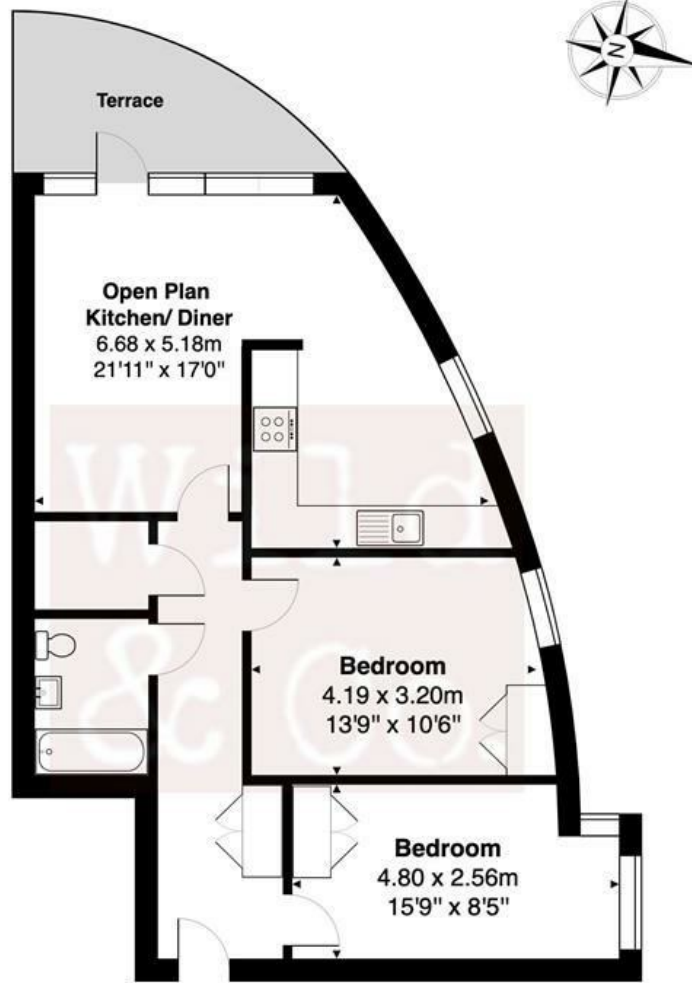
Directions

On Loddiges Road, directly off Mare Street (A107)



Lyme Grove House- E9

Approximate Gross Internal Area 74.0 m² ... 796 ft² (excluding terrace)



FIFTH FLOOR



This Plan is for illustration purpose only and used as general indication of the proposed layout of the property. Dimensions are maximum and approximate and may vary.

Copyright One Square Space Ltd

Energy Efficiency Rating		Current	Potential
Very energy efficient - lower running costs			
(92 plus) A			
(81-91) B			
(69-80) C			
(55-68) D			
(39-54) E			
(21-38) F			
(1-20) G			
Not energy efficient - higher running costs			
England & Wales		82	82
	EU Directive 2002/91/EC		

Environmental Impact (CO ₂) Rating		Current	Potential
Very environmentally friendly - lower CO ₂ emissions			
(92 plus) A			
(81-91) B			
(69-80) C			
(55-68) D			
(39-54) E			
(21-38) F			
(1-20) G			
Not environmentally friendly - higher CO ₂ emissions			
England & Wales			
	EU Directive 2002/91/EC		

These particulars, whilst believed to be accurate are set out as a general outline only for guidance and do not constitute any part of an offer or contract. Intending purchasers should not rely on them as statements of representation of fact, but must satisfy themselves by inspection or otherwise as to their accuracy. No person in this firm's employment has the authority to make or give any representation or warranty in respect of the property.