

Wild & Co.

wildandco.uk



Perth Road, E10 7PA

2 Double bedroom furnished first floor maisonette with shared garden. Situated off Lea Bridge Road within easy access to Lea Bridge Rd Station (direct link to Stratford) and excellent bus routes to Walthamstow. This well-presented, light, and airy flat benefits from modern fitted kitchen, modern fitted 4-piece bathroom, 2 double bedrooms, separate lounge, recently fitted carpet, double glazing, own front door and shared rear garden. Available from 15th April 2025.

£2,200 Per Annum |

Perth Road, E10 7PA



- First floor maisonette
- Modern fitted kitchen
- Recently fitted carpets
- Off Lea Bridge Road
- 2 Double bedrooms
- Separate lounge
- Own front door
- Fully furnished
- Modern fitted 4-peice bathroom
- Shared rear garden



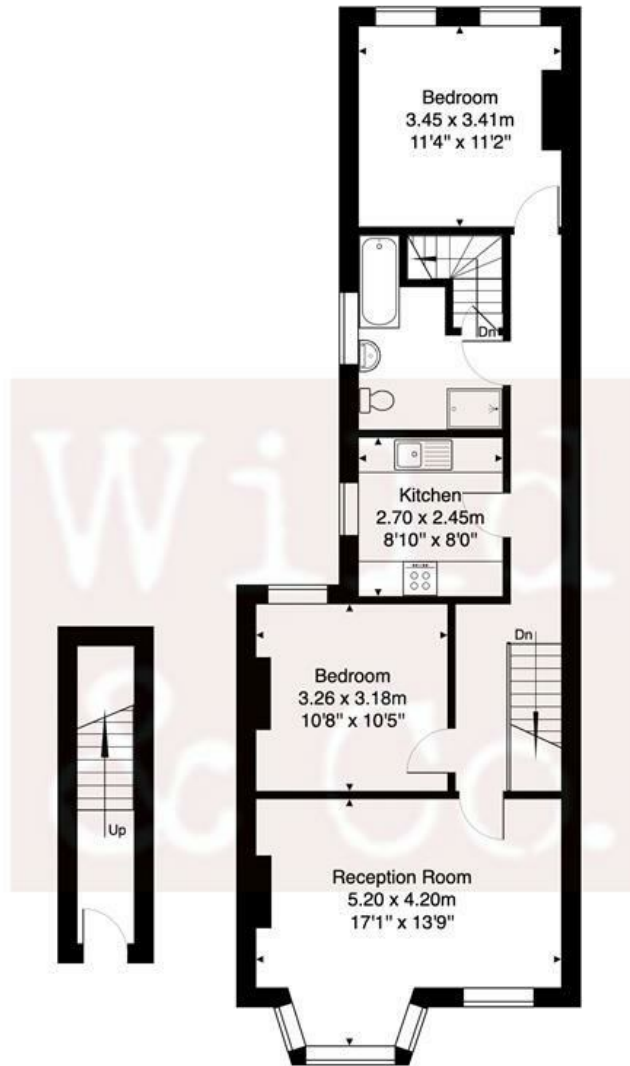
Directions
Directly off Lea Bridge Road (A104)





Perth Road- E10

Approximate Gross Internal Area 69.7 m² ... 750 ft²



GROUND FLOOR

FIRST FLOOR



This Plan is for illustration purpose only and used as general indication of the proposed layout of the property. Dimensions are maximum and approximate and may vary.

Copyright One Square Space Ltd

Energy Efficiency Rating	
	Potential
Very energy efficient - lower running costs	
(92 plus) A	
(81-91) B	
(69-80) C	
(55-68) D	
(39-54) E	
(21-38) F	
(1-20) G	
Not energy efficient - higher running costs	
England & Wales	EU Directive 2002/91/EC

Environmental Impact (CO ₂) Rating	
	Potential
Very environmentally friendly - lower CO ₂ emissions	
(92 plus) A	
(81-91) B	
(69-80) C	
(55-68) D	
(39-54) E	
(21-38) F	
(1-20) G	
Not environmentally friendly - higher CO ₂ emissions	
England & Wales	EU Directive 2002/91/EC

These particulars, whilst believed to be accurate are set out as a general outline only for guidance and do not constitute any part of an offer or contract. Intending purchasers should not rely on them as statements of representation of fact, but must satisfy themselves by inspection or otherwise as to their accuracy. No person in this firm's employment has the authority to make or give any representation or warranty in respect of the property.