

Stratford Road, Hall Green



5



2



3



D

£525,000

Nestled on the desirable Stratford Road in Hall Green, this charming semi-detached house presents an excellent opportunity for both families and investors alike. With a generous living space of 1,761 square feet, this property boasts five well-proportioned bedrooms, ensuring ample room for relaxation and privacy.

The house features two inviting reception rooms, perfect for entertaining guests or enjoying quiet family evenings. The layout is designed to provide a sense of space and comfort, with each room offering a good size that enhances the overall appeal of the home. Additionally, the property includes three bathrooms, catering to the needs of a busy household.

Built in the late 1930s, this residence combines classic architectural charm with modern living requirements. The semi-detached design allows for a sense of community while still providing the privacy that many seek in a home.

One of the standout features of this property is the extensive parking available for up to six vehicles, a rare find in urban settings. This convenience is particularly beneficial for families or those who frequently host visitors.

Whether you are looking for a family home with plenty of space or a promising investment opportunity, this property on Stratford Road is not to be missed. Its spacious rooms, prime location, and potential for growth make it a compelling choice for discerning buyers.



Stratford Road, Hall Green

- Semi-Detached
- 5 Bedrooms
- Lockable Garage
- Garden
- Potential To Become A Stunning Family Home
- 2 Reception Rooms
- Spacious Kitchen/Diner
- Off-Road Parking
- Potential Development Project
- Desirable Location

Reception Room

11'4" x 12'0" (3.46m x 3.66m)

Double glazed bay window to front, laminate flooring, chimney breast, fireplace, wall mounted radiator, ceiling lights, skirting, coving to ceiling

Living Room

16'7" x 11'5" (5.06m x 3.48m)

Double glazed door to rear, laminate flooring, fireplace, chimney breast, ceiling light, skirting, wall mounted radiator

Kitchen

15'7" x 14'10" (4.74m x 4.51m)

Double glazed window to rear, double glazed door to rear, tile flooring, splash back tiling, ceiling lights, generous number of storage units, worktops, drainer sink with mixer tap, integrated gas cooker and extractor fan

Conservatory

Double glazed window Throughout, laminate flooring, door to garden, ceiling light, wall mounted radiator

Shower Room

6'10" x 4'6" (2.09m x 1.38m)

Tile flooring, wall tiles, shower unit, wash basin with separate taps, heated towel rail, extractor fan

Utility

5'8" x 7'7" (1.73m x 2.31m)

Storage units, tile flooring, Plumbing for white goods

Garage

15'9" x 8'4" (4.80m x 2.54m)

Garage door, ceiling light, concrete flooring, door to utility room

Bedroom 1

13'1" x 12'0" (3.98m x 3.66m)

Double glazed window to rear, carpet flooring, wall mounted radiator, skirting, ceiling light, Built in wardrobes

Bedroom 2

12'2" x 12'1" (3.71m x 3.68m)

Double glazed window to front, carpet flooring, wall mounted radiator, skirting, ceiling light, Built in wardrobes

Bedroom 3

6'6" x 6'11" (1.98m x 2.10m)

Double glazed window to front, carpet flooring, wall mounted radiator, skirting, ceiling light

Bathroom

9'0" x 6'7" (2.74m x 2.00m)

Privacy double glazed window to rear, tile flooring, wall tiles, bathtub with mixer tap, shower unit over bath, wash basin with mixer tap, toilet, wall mounted radiator

Bedroom 4

9'9" x 8'2" (2.98m x 2.48m)

Double glazed window to front, carpet flooring, wall mounted radiator, skirting, ceiling light

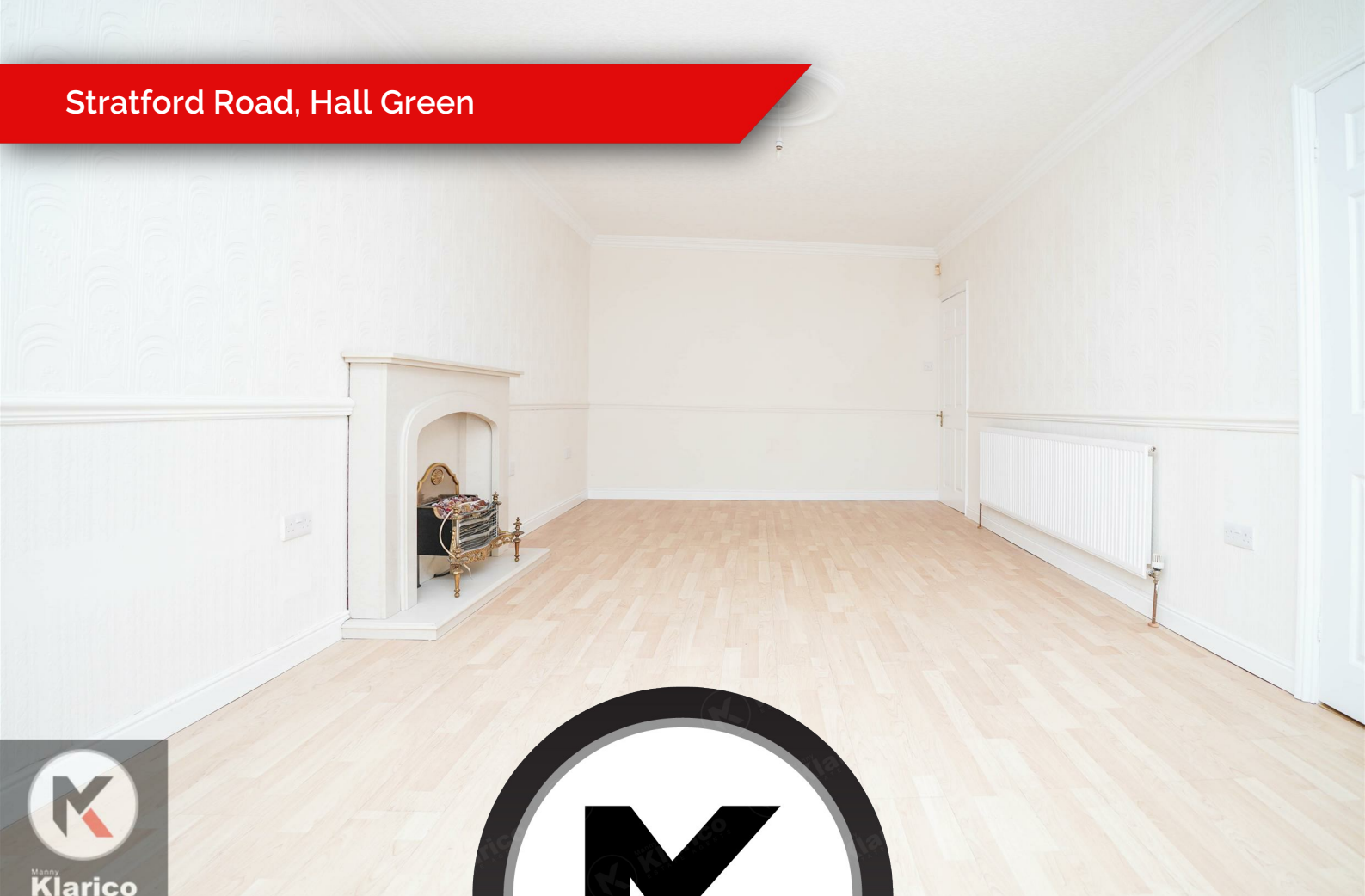
Bedroom 5

7'9" x 7'7" (2.37m x 2.31m)

Double glazed window to rear, carpet flooring, wall mounted radiator, skirting, ceiling light

Directions





Shower Room

5'1" x 4'11" (1.55m x 1.49m)

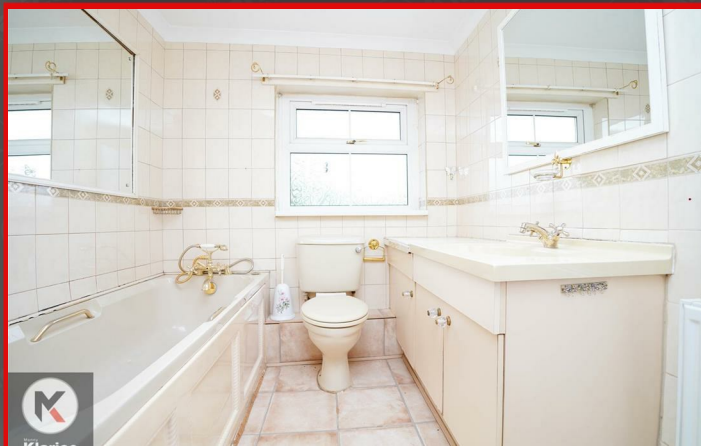
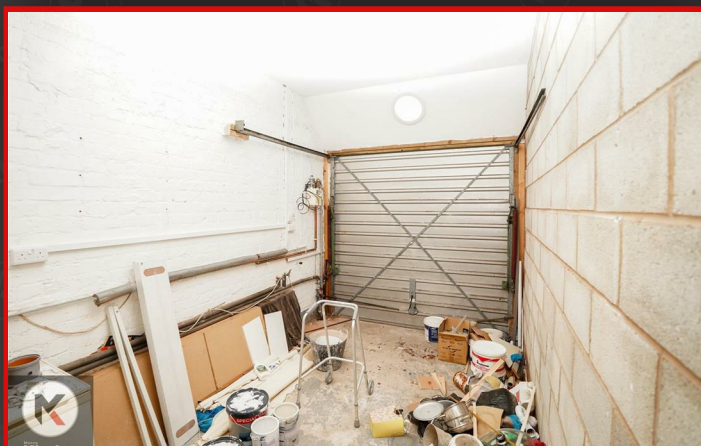
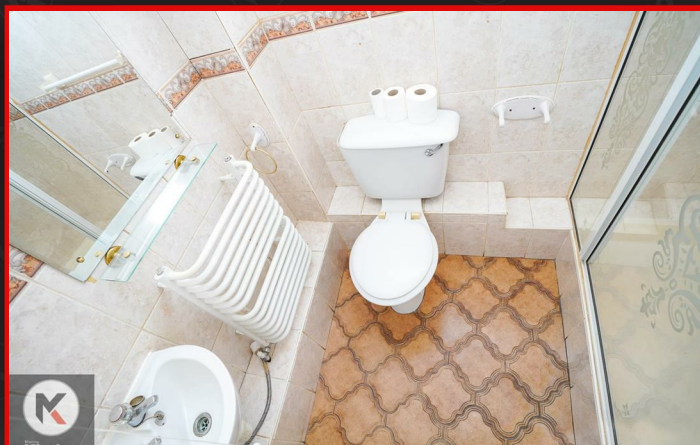
Tile flooring, wall tiles, shower unit, pedestal sink with mixer tap, toilet, extractor fan

Garden

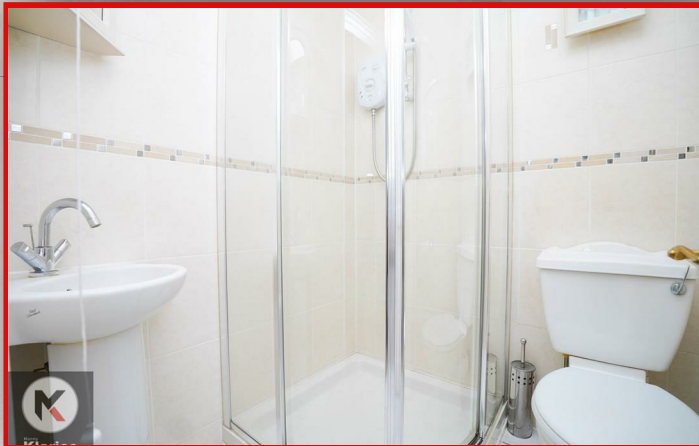
Spacious garden, garden slabs, privacy from rear, Fence panels to boundaries, laid lawn, Hedge shrubs

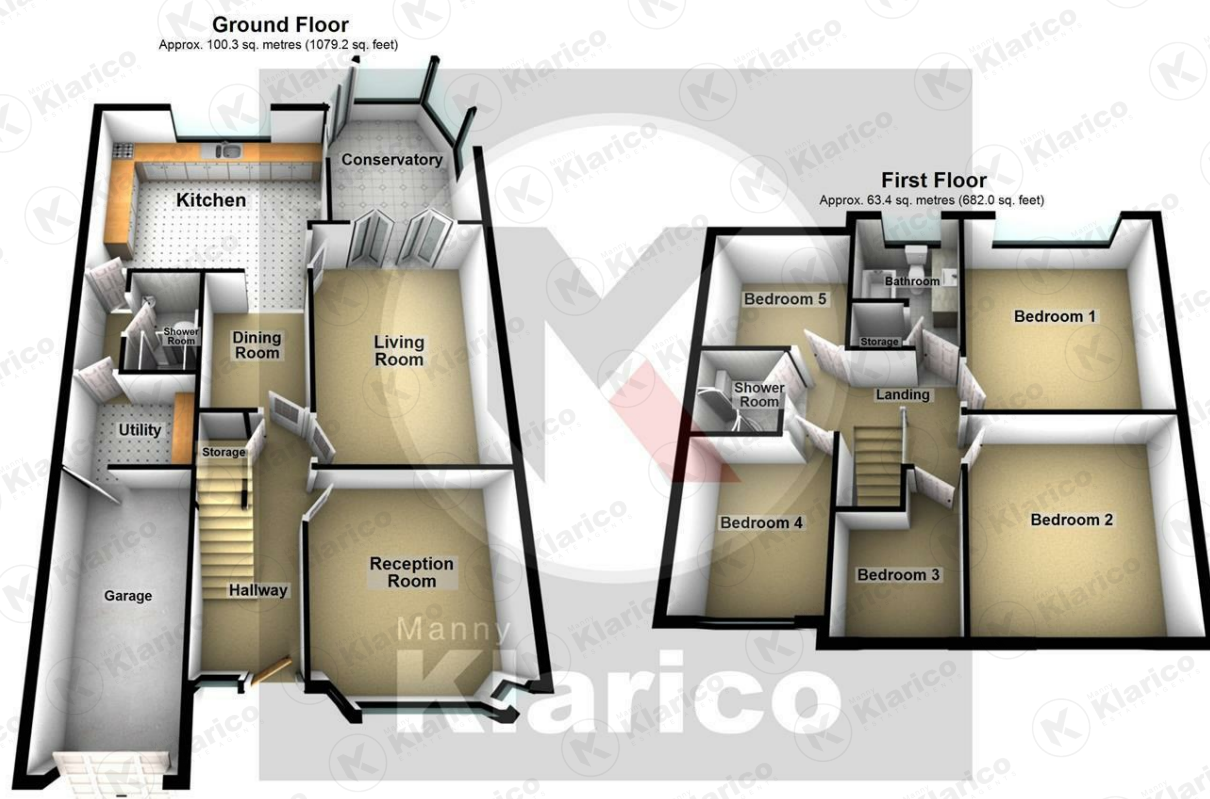


Stratford Road, Hall Green



Stratford Road, Hall Green





Total area: approx. 163.6 sq. metres (1761.2 sq. feet)



Manny
Klarico
ESTATE AGENTS

176 Highfield Road
Hall Green
Birmingham
West Midlands
B28 0HT

0121 777 7211
www.mannyklarico.co.uk

