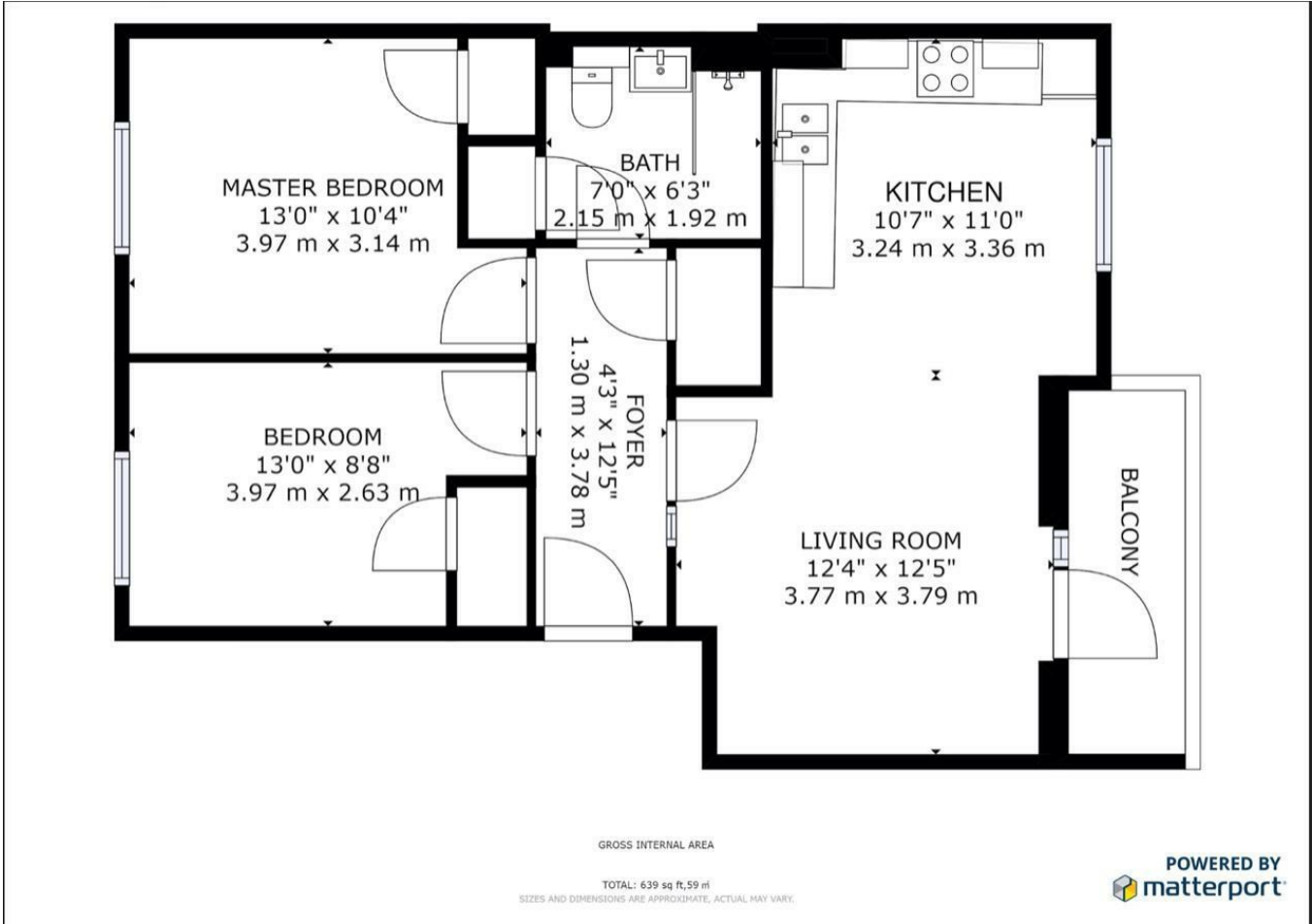


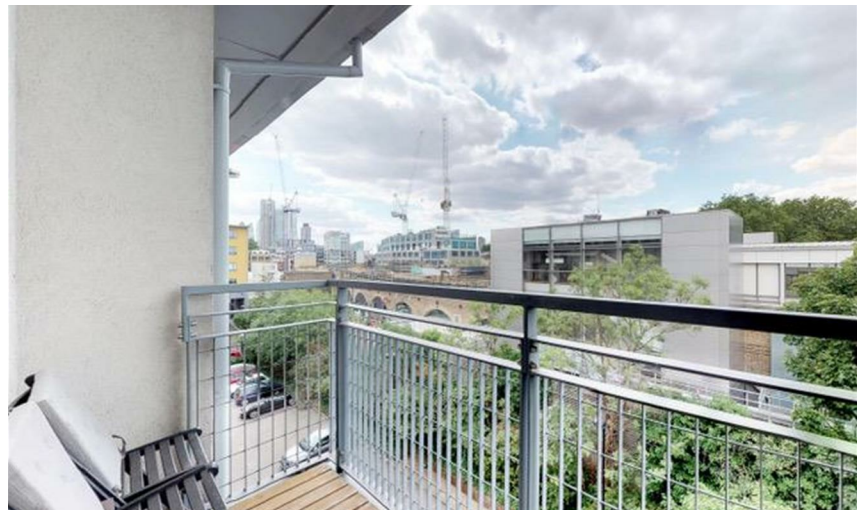


£1,890 PER MONTH

Available now. This two double bedroom apartment is ideally located for access to the City, Shoreditch and Haggerston Park. With a bright open plan lounge-diner with a private balcony, this apartment would be ideal for a couple or professional sharers alike. The closest station is Hoxton, is approximately two minutes walk away, offer greater access to wider London.

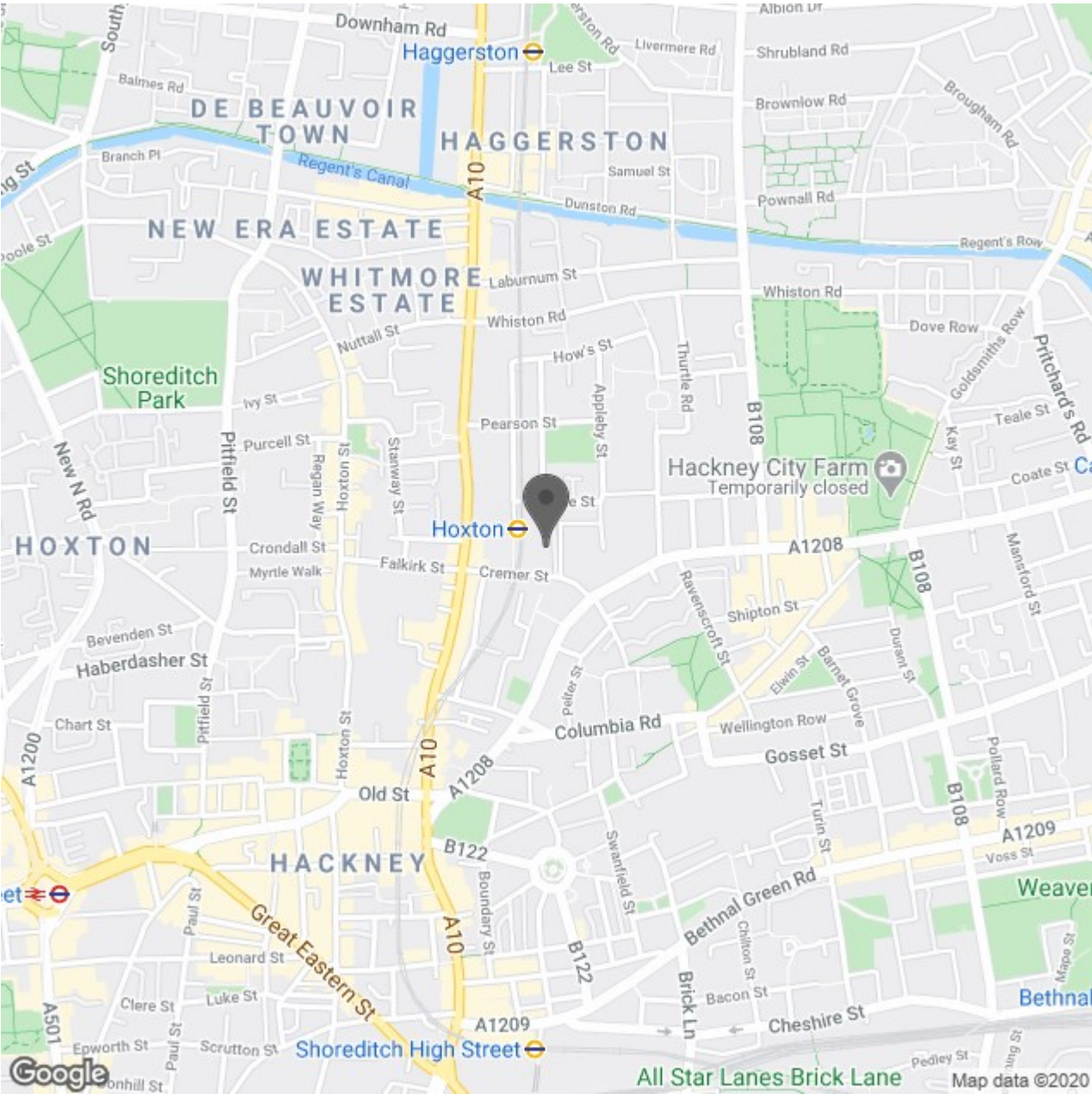


- Two Double Bedrooms
- Two Bathrooms
- Private Balcony



Energy Efficiency Rating		Current	Potential
Very energy efficient - lower running costs			
(92 plus) A			
(81-91) B			
(69-80) C			
(55-68) D			
(39-54) E			
(21-38) F			
(1-20) G			
Not energy efficient - higher running costs			
England & Wales		EU Directive 2002/91/EC	

Environmental Impact (CO ₂) Rating		Current	Potential
Very environmentally friendly - lower CO ₂ emissions			
(92 plus) A			
(81-91) B			
(69-80) C			
(55-68) D			
(39-54) E			
(21-38) F			
(1-20) G			
Not environmentally friendly - higher CO ₂ emissions			
England & Wales		EU Directive 2002/91/EC	



Red.



Red Property Partnership Ltd
 Company Registered in England & Wales No. 06946290
 Registered Office: 501 Kingsland Road, London, E8 4AU
 VAT Registration Number: 112288536