

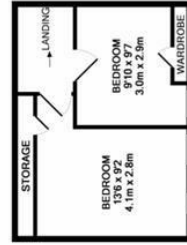
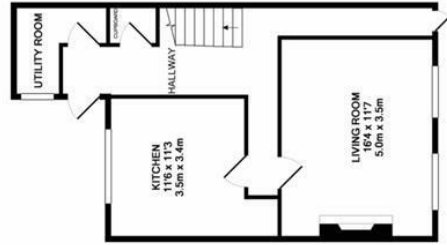
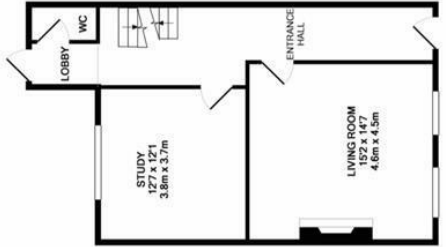
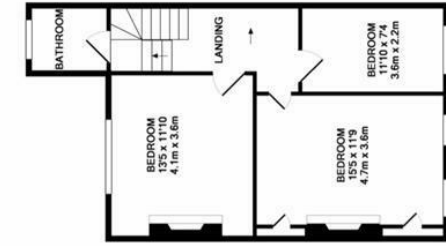


East Ascent, St. Leonards-On-Sea TN38 0DS

Offers in the region of £575,000



Grade II listed Georgian town house found in the heart of St. Leonards gorgeous conservation area. Being one of only five buildings in this style on East Ascent that are still complete houses, as intended by Decimus Burton, this is a fantastic opportunity to own a slice of History. This handsome home is packed with period features and charm - spanning over four spacious floors, the sense of space here is undeniable. The versatile accommodation here consists of five bedrooms and three reception rooms with a family bathroom and separate w/c. The kitchen/dining room sits on the lower level of the house and opens on to an enclosed courtyard with steps leading up to an enchanting walled garden. East Ascent, remains one of St. Leonards' finest addresses is steps away from the Sea and St Leonards Gardens. The proximity to the trendy hub of Norman Road with its artisan shops, local eateries and galleries means there is a little something for everyone. If you fancy venturing further afield, St Leonards' mainline Railway Station gets you to London Bridge in 1 hour and 20 minutes.



TOTAL APPROX. FLOOR AREA 1938 SQ.FT. (181.0 SQ.M.)

(While every attempt has been made to ensure the accuracy of the floor plan contained here, measurements are approximate and should not be relied upon for any legal or financial purposes. The plan is for illustrative purposes only and should be used as such by any prospective purchaser. The actual construction and dimensions may vary and are not to be taken as a guarantee of any kind. Measurements are taken to the best of our knowledge and are not to be taken as a guarantee. Made with Metropix 02077

