

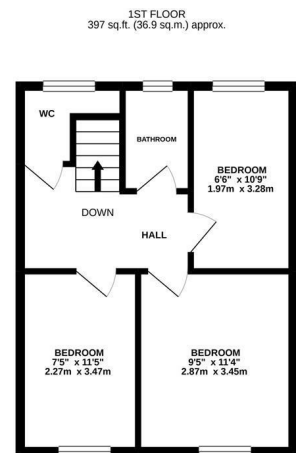
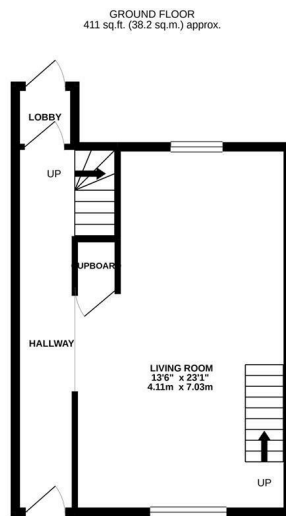
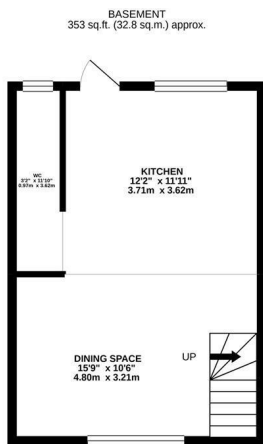


Shepherd Street, St. Leonards-On-Sea TN38 0ET

Offers in excess of £375,000



Set in a PRIME POSITION in the hub of St. Leonards On Sea this three bedroom, THREE STOREY RESIDENCE is the perfect seaside retreat. It's ideally placed for access to the local boutique shops and eateries, the mainline railway station and beach. The accommodation is really versatile and has been transformed by the current sellers to offer a SPECTACULAR FAMILY HOME. The ground floor is used as a formal living room and enjoys a dual aspect. The stylish EAT IN KITCHEN sits on the lower floor and boasts an ABUNDANCE OF CHARACTER FEATURES, there is ample storage space plenty of space for a full size dining table. There's also a handy DOWNSTAIRS CLOAKROOM and doors leading out to the rear garden. Sat on the upper floor there are three generous and TASTEFULLY DECORATED BEDROOMS served by a beautiful family bathroom with a separate cloakroom. Externally, this fantastic home enjoys an enclosed rear garden with a patio area, creating the PERFECT SPOT TO DINE AL FRESCO or entertain.



TOTAL FLOOR AREA: 1161 sq.ft. (107.9 sq.m.) approx.

Whilst every attempt has been made to ensure the accuracy of the floorplan contained here, measurements of doors, windows, rooms and any other items are approximate and no responsibility is taken for any error, omission or mis-statement. This plan is for illustrative purposes only and should be used as such by any prospective purchaser. The services, systems and appliances shown have not been tested and no guarantee as to their operability or efficiency can be given.
Made with Metropix ©2020

