

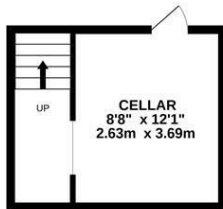
Downs Road, Hastings TN34 2DZ

Offers in excess of £330,000

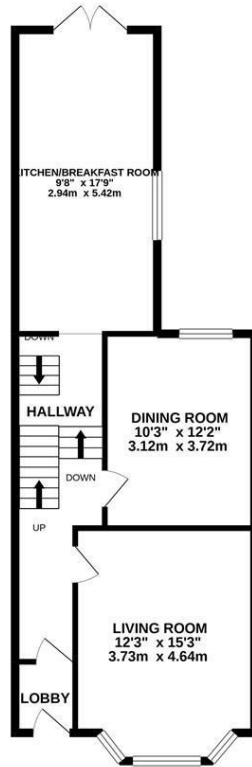


This stunning three bedroom SEMI DETACHED HOUSE enjoys a wealth of character features and FAR REACHING VIEWS. It's ideally positioned in a FAVOURED BLACKLANDS LOCATION within easy reach of popular schools, Alexandra Park and St. Helens Woods making it PERFECT FOR FAMILY LIFE. Accessed via an enclosed porch the bright accommodation here enjoys a SPLIT LEVEL FEEL with a cosy, bay fronted living room and a SEPARATE RECEPTION ROOM which could be used as a fourth bedroom if needed. The GENEROUS EAT IN KITCHEN sits at the rear with double doors leading out to a raised deck in the garden. There are THREE WELL PROPORTIONED BEDROOMS along with a family bathroom on the first floor and there is also a large loft space. Externally the rear garden is a particular feature, it's mainly laid to lawn with raised flower beds and a raised decked area, there is also a HANDY CELLAR which with access to the garden provides a great space for utilities and storage. Enjoying beautiful rooftop and sea views and a driveway providing PARKING FOR TWO this fantastic home is not to be missed.

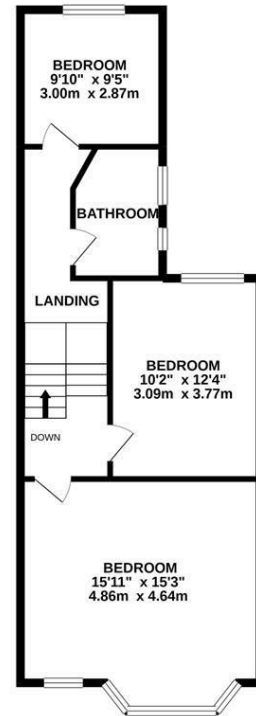
**BASEMENT**  
178 sq.ft. (16.5 sq.m.) approx.



**GROUND FLOOR**  
671 sq.ft. (62.3 sq.m.) approx.



**1ST FLOOR**  
653 sq.ft. (60.7 sq.m.) approx.



**TOTAL FLOOR AREA: 1502 sq.ft. (139.5 sq.m.) approx.**

Whilst every attempt has been made to ensure the accuracy of the floorplan contained here, measurements of doors, windows, rooms and any other items are approximate and no responsibility is taken for any error, omission or mis-statement. This plan is for illustrative purposes only and should be used as such by any prospective purchaser. The services, systems and appliances shown have not been tested and no guarantee as to their operability or efficiency can be given.  
Made with Metropix ©2020

