



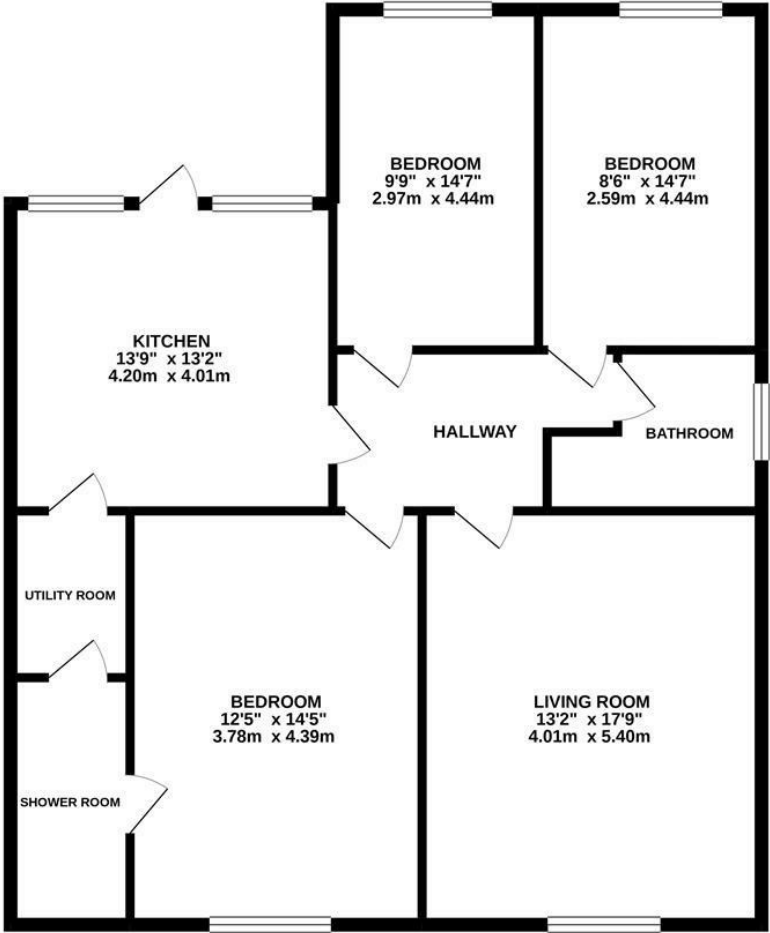
St. Helens Park Road, Hastings TN34 2DP

Offers in excess of £275,000



Set on the LOWER FLOOR of this handsome VICTORIAN VILLA, this spacious garden apartment offers generous proportions and character features. Set in the favoured BLACKLANDS AREA it's with easy reach of good transport links and just a short stroll from Alexandra Park. The KITCHEN/BREAKFAST ROOM is a really SOCIABLE SPACE with farmhouse style units and plenty of space for a dining table. There is door leading out to the rear garden and a separate UTILITY ROOM. The well proportioned living room features a WORKING LOG BURNER. There are THREE DOUBLE BEDROOMS and a modern bathroom, the master bedroom also enjoys an EN-SUITE SHOWER ROOM. Being sold with a LARGE, PRIVATE GARDEN and a SHARE OF FREEHOLD this stunning property is not one to be missed.

GROUND FLOOR
1144 sq.ft. (106.3 sq.m.) approx.



TOTAL FLOOR AREA : 1144 sq.ft. (106.3 sq.m.) approx.

Whilst every attempt has been made to ensure the accuracy of the floorplan contained here, measurements of doors, windows, rooms and any other items are approximate and no responsibility is taken for any error, omission or mis-statement. This plan is for illustrative purposes only and should be used as such by any prospective purchaser. The services, systems and appliances shown have not been tested and no guarantee as to their operability or efficiency can be given.

Made with Metropix ©2020

