

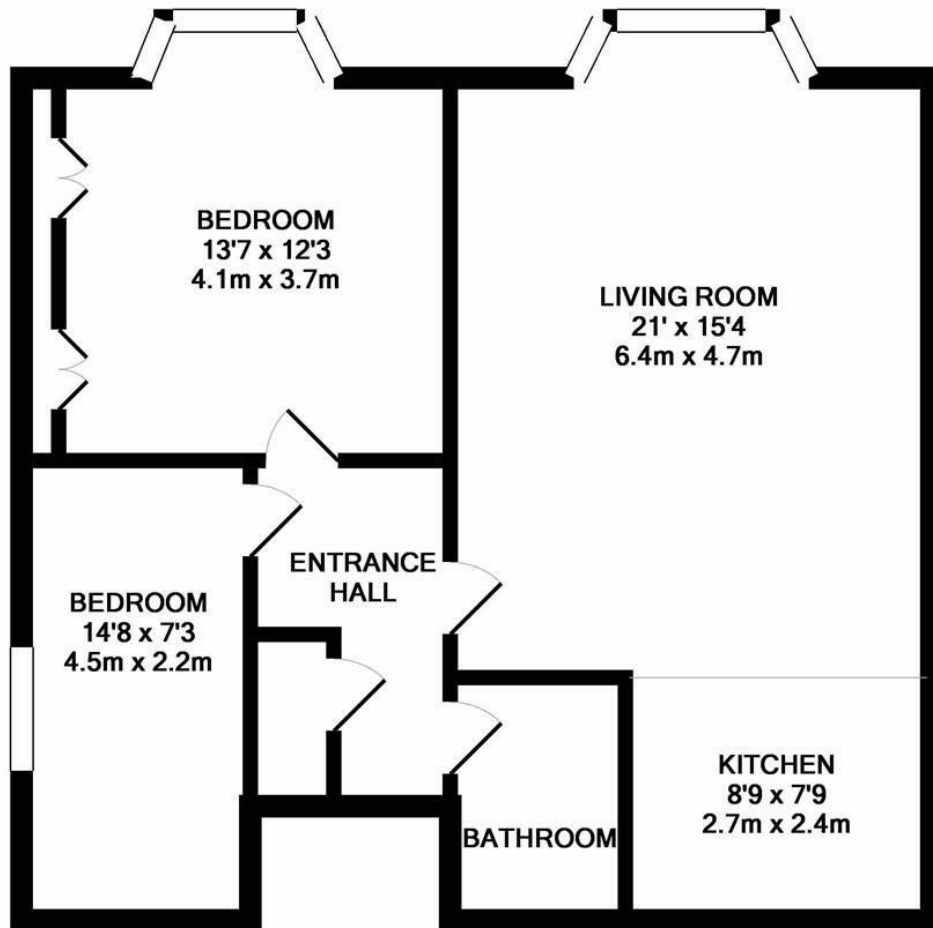


St. Margarets Terrace, St. Leonards-On-Sea TN37 6EW

Offers in excess of £185,000



Beautifully presented TWO BEDROOM, hall floor apartment set close to central St. Leonards with a green outlook over the neighbouring area. The effortlessly cool accommodation here is arranged as a bay fronted living room which is open to the MODERN KITCHEN, two DOUBLE BEDROOMS and a fitted bathroom. With a welcoming entrance hall and a long lease this fab property creates the perfect first time home or SEASIDE PAD.



TOTAL APPROX. FLOOR AREA 777 SQ.FT. (72.2 SQ.M.)

Whilst every attempt has been made to ensure the accuracy of the floor plan contained here, measurements of doors, windows, rooms and any other items are approximate and no responsibility is taken for any error, omission, or mis-statement. This plan is for illustrative purposes only and should be used as such by any prospective purchaser. The services, systems and appliances shown have not been tested and no guarantee as to their operability or efficiency can be given
 Made with Metropix ©2018

