



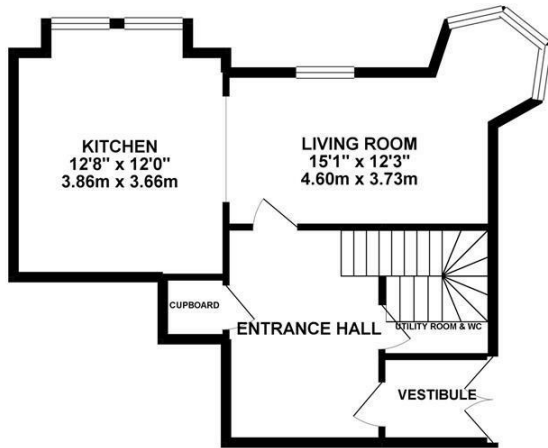
Sedlescombe Road South, St. Leonards-On-Sea TN38 0TJ

Offers in excess of £285,000

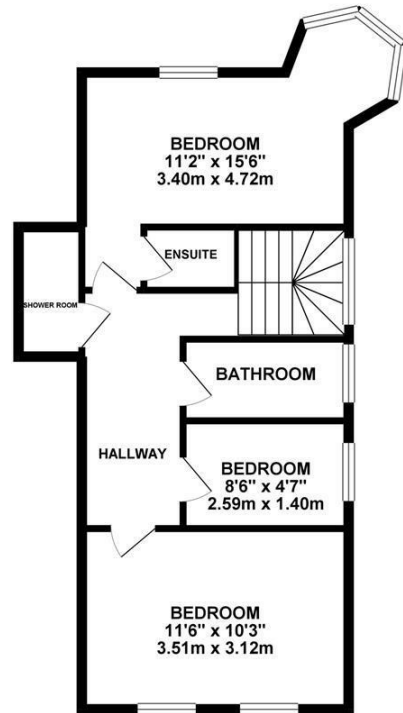


This elegant THREE BEDROOM LEASEHOLD APARTMENT makes up one wing of this CHARACTERFUL RESIDENCE, set close to local amenities and within easy reach of the hub of St. Leonards it's well placed to enjoy the exuberant local area. Having been THOUGHTFULLY RESTORED to an impressive standard the period features here are complimented with MODERN REFINEMENTS. Accessed via PRIVATE DOUBLE DOORS which open on to an entrance vestibule with a tiled floor this fantastic property enjoys SPACIOUS AND BRIGHT ACCOMMODATION which spans two handsome storeys. The large entrance hall leads on to a GORGEOUS LIVING SPACE with a feature turret bay window and fireplace which is open to a beautiful EAT IN KITCHEN. The kitchen enjoys INTEGRATED APPLIANCES including a double oven, fridge freezer and a wine fridge. The GRAND STAIRCASE rises past the large stained glass window to the first floor where there are three bedrooms. The master bedroom enjoys an EN-SUITE SHOWER ROOM and there is also a family bathroom and a separate shower room on this level. With OFF ROAD PARKING for two vehicles this superb property is not to be missed.

GROUND FLOOR 515.38 sq. ft.
(47.88 sq. m.)



1ST FLOOR 591.01 sq. ft.
(54.91 sq. m.)



TOTAL FLOOR AREA : 1106.39 sq. ft. (102.79 sq. m.) approx.

Whilst every attempt has been made to ensure the accuracy of the floorplan contained here, measurements of doors, windows, rooms and any other items are approximate and no responsibility is taken for any error, omission or mis-statement. This plan is for illustrative purposes only and should be used as such by any prospective purchaser. The services, systems and appliances shown have not been tested and no guarantee as to their operability or efficiency can be given.
Made with Metropix ©2019

