

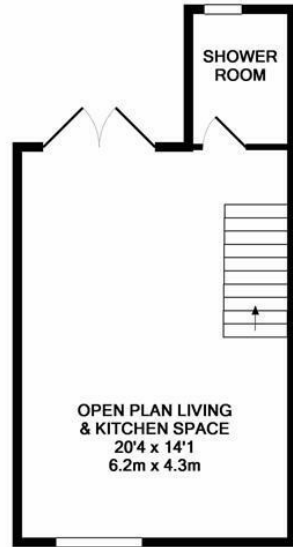


Plynlimmon Road, Hastings TN34 3LT

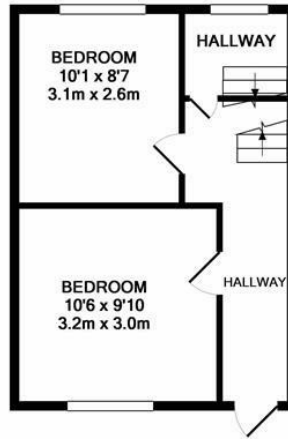
Offers in excess of £300,000



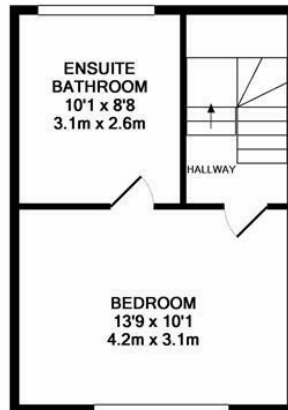
Sit on the West Hill this three storey home is simply exquisite, having been completely renovated throughout it enjoys well designed accommodation with luxury fittings. The lower level offers a stylish open space with a trendy kitchen, dining and seating area that opens on to an impeccable rear terrace with rooftop views. There is also a contemporary shower room with w/c on this floor. The ground floor is really versatile and is currently arranged as two double bedrooms. The master suite is found on the top floor with an outlook towards the West Hill from the bedroom, the en-suite bathroom is simply gorgeous with a freestanding bath, walk through shower and matte black fittings. With spectacular views across Hastings and down to the sea it's easy to see why a house in this location is so highly desired.



BASEMENT LEVEL
APPROX. FLOOR
AREA 325 SQ.FT.
(30.2 SQ.M.)



GROUND FLOOR
APPROX. FLOOR
AREA 291 SQ.FT.
(27.0 SQ.M.)



1ST FLOOR
APPROX. FLOOR
AREA 292 SQ.FT.
(27.2 SQ.M.)

TOTAL APPROX. FLOOR AREA 908 SQ.FT. (84.3 SQ.M.)

Whilst every attempt has been made to ensure the accuracy of the floor plan contained here, measurements of doors, windows, rooms and any other items are approximate and no responsibility is taken for any error, omission, or mis-statement. This plan is for illustrative purposes only and should be used as such by any prospective purchaser. The services, systems and appliances shown have not been tested and no guarantee as to their operability or efficiency can be given

Made with Metropix ©2018

