



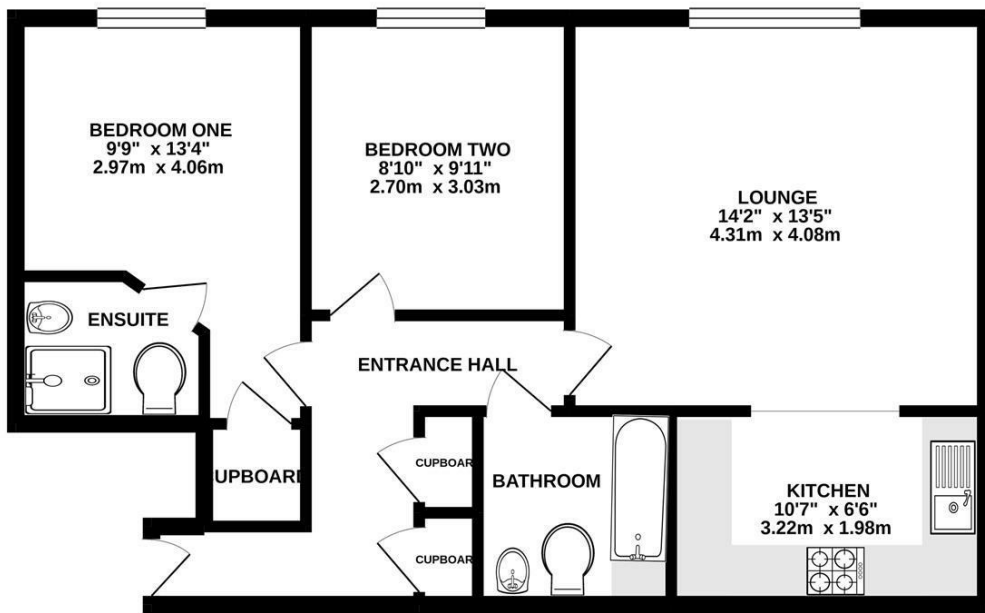
## Arbourvale, St. Leonards-On-Sea TN38 0FN

Offers in the region of £160,000



This TWO BEDROOM top floor apartment sits nestled back from the road with a GREEN OUTLOOK. The accommodation here decorated with a neutral palette throughout creating a MODERN SPACE with an OPEN PLAN LIVING SPACE and kitchen with integrated appliances. There are TWO DOUBLE BEDROOMS, the master room benefits from an EN-SUITE SHOWER ROOM and there is also a family bathroom. Set in a highly sought after spot with ALLOCATED PARKING BAY it would make the perfect first time home.

GROUND FLOOR  
608 sq.ft. (56.4 sq.m.) approx.



TOTAL FLOOR AREA : 608 sq.ft. (56.4 sq.m.) approx.

Whilst every attempt has been made to ensure the accuracy of the floorplan contained here, measurements of doors, windows, rooms and any other items are approximate and no responsibility is taken for any error, omission or mis-statement. This plan is for illustrative purposes only and should be used as such by any prospective purchaser. The services, systems and appliances shown have not been tested and no guarantee as to their operability or efficiency can be given.  
Made with Metropix ©2020

