



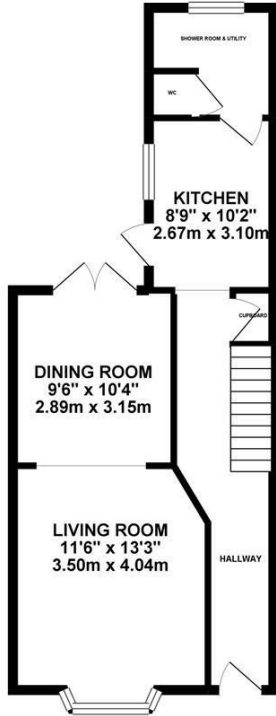
Mount Pleasant Road, Hastings TN34 3SN

Offers in excess of £190,000

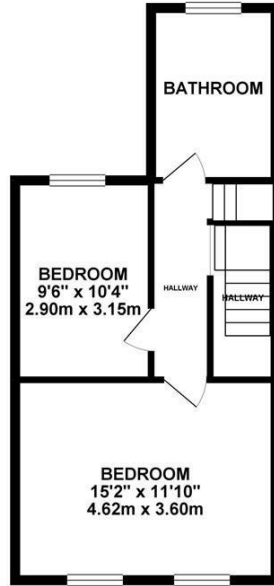


Nestled on the edge of the WEST HILL this two bedroom home offers spacious accommodation filled with character charm. Just a short stroll from the Old Town, Hastings Town Centre and Ore railway station it's ideally positioned for family life by the sea. The GENEROUS ACCOMMODATION here spans three storeys with a BAY FRONTED LIVING space open to the dining area. The kitchen sits at the rear of the property with a separate UTILITY AND SHOWER ROOM. There are TWO DOUBLE BEDROOMS and a family bathroom on the first floor and a converted LOFT ROOM WITH A VELUX WINDOW room on the upper floor, it would make the perfect home office or occasional bedroom. The enclosed COURTYARD GARDEN at the rear offers a paved area.

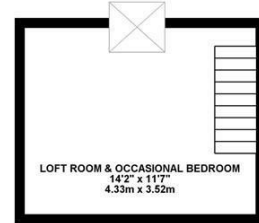
GROUND FLOOR 489.17 sq. ft.
(45.45 sq. m.)



1ST FLOOR 436.04 sq. ft.
(40.51 sq. m.)



2ND FLOOR 164.08 sq. ft.
(15.24 sq. m.)



TOTAL FLOOR AREA : 1089.30 sq. ft. (101.20 sq. m.) approx.

Whilst every attempt has been made to ensure the accuracy of the floorplan contained here, measurements of doors, windows, rooms and any other items are approximate and no responsibility is taken for any error, omission or mis-statement. This plan is for illustrative purposes only and should be used as such by any prospective purchaser. The services, systems and appliances shown have not been tested and no guarantee as to their operability or efficiency can be given.
Made with Metropix ©2019

