



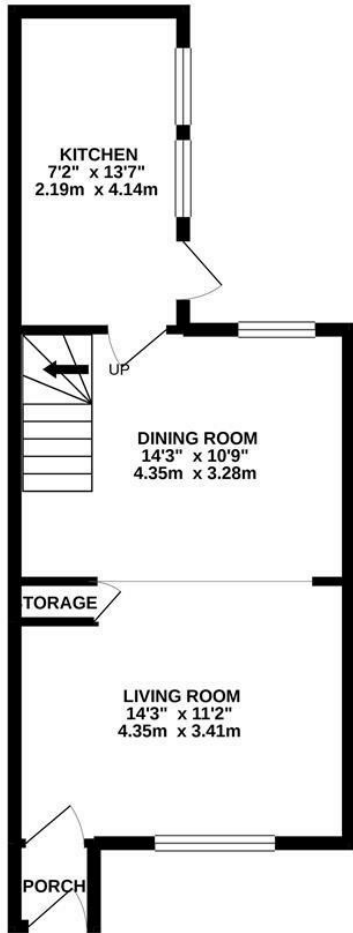
Maplehurst Road, St. Leonards-On-Sea TN37 7NA

Offers in excess of £240,000

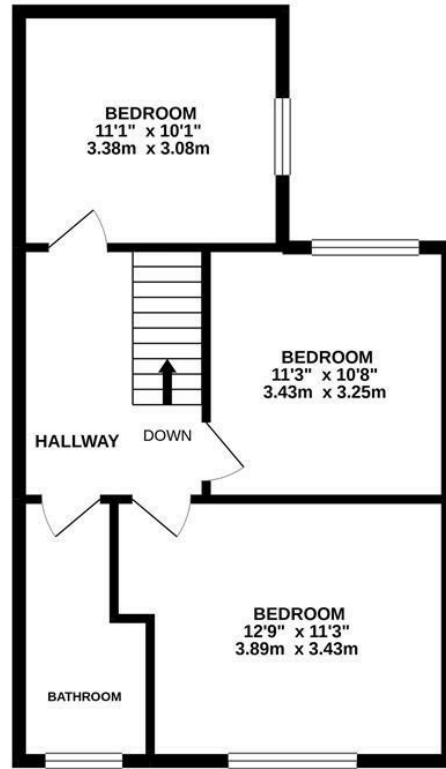


Charming THREE BEDROOM family home set on the outskirts of St. Leonards within close reach of local shops, the A21 and Battle. The accommodation here spans TWO CHARACTERFUL STOREYS with the ground floor arranged as a STYLISH LIVING ROOM which is open to the dining room, creating a beautiful DUAL ASPECT SPACE. While the MODERN KITCHEN sits at the rear of the property and gives access out to the SUNNY GARDEN. There are THREE DOUBLE BEDROOMS found on the first floor which are served by a family bathroom. The rear garden is a particular feature, there is a generous paved area, PERFECT FOR ENTERTAINING and leads on to a LOW MAINTENANCE area of garden with raised flower beds. To the front of the house there is a driveway providing OFF ROAD PARKING for two.

GROUND FLOOR  
423 sq.ft. (39.3 sq.m.) approx.



1ST FLOOR  
516 sq.ft. (47.9 sq.m.) approx.



TOTAL FLOOR AREA : 939 sq.ft. (87.3 sq.m.) approx.

Whilst every attempt has been made to ensure the accuracy of the floorplan contained here, measurements of doors, windows, rooms and any other items are approximate and no responsibility is taken for any error, omission or mis-statement. This plan is for illustrative purposes only and should be used as such by any prospective purchaser. The services, systems and appliances shown have not been tested and no guarantee as to their operability or efficiency can be given.  
Made with Metropix ©2020

