

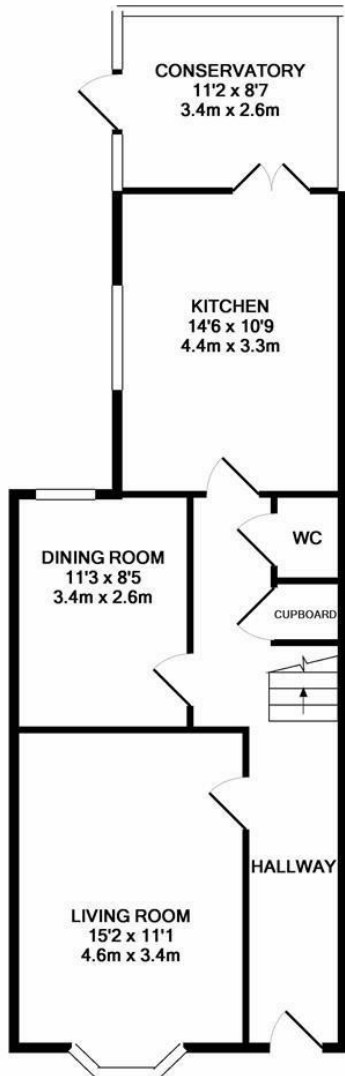


Burry Road, St. Leonards-On-Sea TN37 6QZ

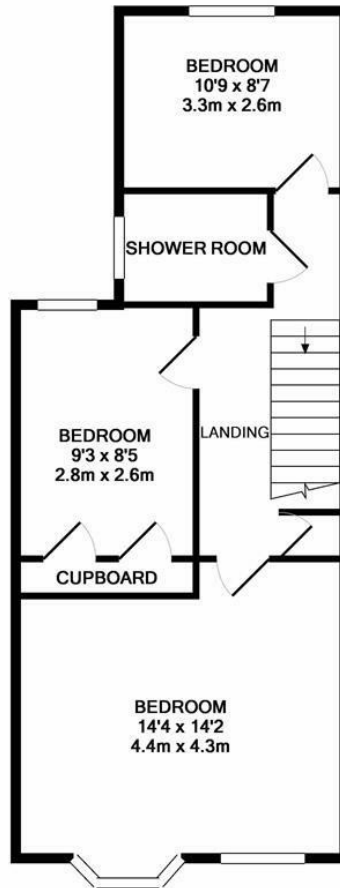
Offers in excess of £300,000



Beautiful Victorian home found just a short stroll from popular Schools, local shops in Silverhill and Alexandra Park. The accommodation is meticulously presented throughout offering a bay fronted living room, separate dining space and contemporary eat in kitchen which opens on to a recently added conservatory. On the first floor are three bedrooms and modern, fully tiled shower room. The level rear garden offers a private space, mainly laid to lawn. The spacious and well presented accommodation here makes this period property ideal for family living.



GROUND FLOOR
APPROX. FLOOR
AREA 668 SQ.FT.
(62.1 SQ.M.)



1ST FLOOR
APPROX. FLOOR
AREA 571 SQ.FT.
(53.0 SQ.M.)
TOTAL APPROX. FLOOR AREA 1239 SQ.FT. (115.1 SQ.M.)

Whilst every attempt has been made to ensure the accuracy of the floor plan contained here, measurements of doors, windows, rooms and any other items are approximate and no responsibility is taken for any error, omission, or mis-statement. This plan is for illustrative purposes only and should be used as such by any prospective purchaser. The services, systems and appliances shown have not been tested and no guarantee as to their operability or efficiency can be given
Made with Metropix ©2018

