



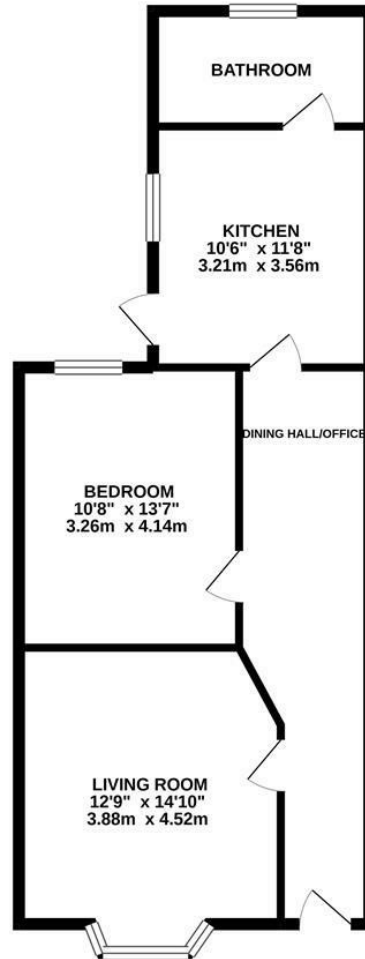
Kenilworth Road, St. Leonards-On-Sea TN38 0JD

Offers in excess of £165,000



Spacious one bedroom, GARDEN APARTMENT set in a favoured CENTRAL ST. LEONARDS location. The accommodation here enjoys a PRIVATE ENTRANCE which opens in to generous entrance hall which is currently used as a DINING HALL, it could also be the perfect home office space. The living room enjoys a BAY WINDOW with a front aspect while the STYLISH KITCHEN sits at the rear with access out to the garden and boasts underfloor heating. The double bedroom is served by a CONTEMPORARY BATHROOM where there is a bath with a shower over, this also features underfloor heating. The REAR GARDEN is a particular feature, it boasts an expanse of lawn and a slightly raised decked area, perfect for those Summer evenings.

GROUND FLOOR
649 sq.ft. (60.3 sq.m.) approx.



TOTAL FLOOR AREA : 649 sq.ft. (60.3 sq.m.) approx.

Whilst every attempt has been made to ensure the accuracy of the floorplan contained here, measurements of doors, windows, rooms and any other items are approximate and no responsibility is taken for any error, omission or mis-statement. This plan is for illustrative purposes only and should be used as such by any prospective purchaser. The services, systems and appliances shown have not been tested and no guarantee as to their operability or efficiency can be given.
Made with Metropix ©2020

